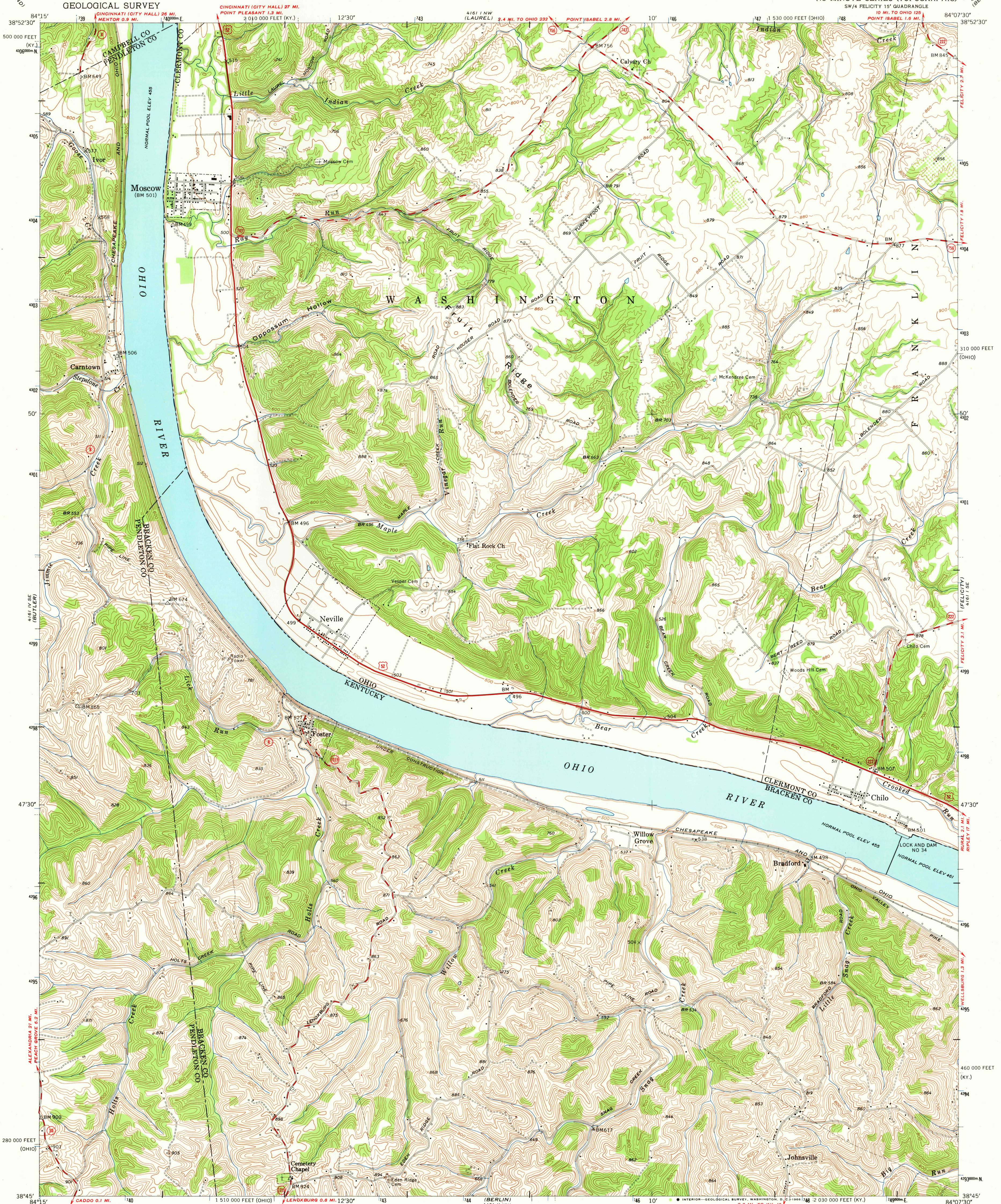


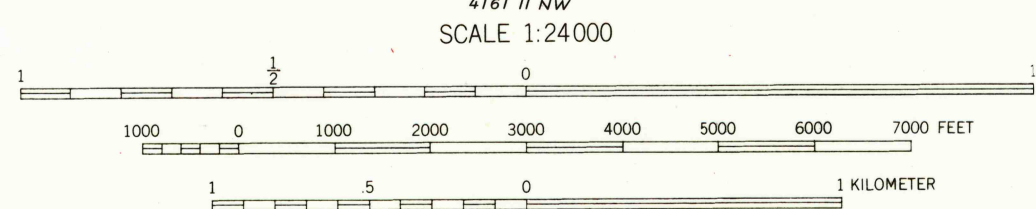
UNITED STATES  
DEPARTMENT OF THE INTERIOR  
GEOLOGICAL SURVEY

MOSCOW QUADRANGLE  
OHIO-KENTUCKY  
7.5 MINUTE SERIES (TOPOGRAPHIC)  
SW 1/4 FELICITY 15' QUADRANGLE  
10 MI. TO OHIO 125  
POINT ISABEL 1.6 MI.  
10 MI. TO OHIO 125  
POINT ISABEL 1.6 MI.



Mapped, edited, and published by the Geological Survey  
Control by USGS, USC&GS, and USCE  
Topography from aerial photographs by multiple methods  
Aerial photographs taken 1950 and 1952. Field check 1953  
Polyconic projection, 1927 North American datum  
10,000-foot grids based on Ohio coordinate system,  
south zone and Kentucky coordinate system, north zone  
1000-meter Universal Transverse Mercator grid ticks,  
zone 16, shown in blue

UTM GRID AND 1983 MAGNETIC NORTH  
DECLINATION AT CENTER OF SHEET



CONTOUR INTERVAL 20 FEET  
DATUM IS MEAN SEA LEVEL  
THIS MAP COMPLIES WITH NATIONAL MAP ACCURACY STANDARDS  
FOR SALE BY U.S. GEOLOGICAL SURVEY, WASHINGTON, D.C. 20242,  
KENTUCKY GEOLOGICAL SURVEY, LEXINGTON, KENTUCKY,  
AND KENTUCKY DEPARTMENT OF COMMERCE, FRANKFORT, KENTUCKY  
A FOLDER DESCRIBING TOPOGRAPHIC MAPS AND SYMBOLS IS AVAILABLE ON REQUEST

USGS  
Historical File  
Topographic Division



ROAD CLASSIFICATION  
Heavy-duty 4 LANE 16 LANE Light-duty  
Medium-duty 4 LANE 16 LANE Unimproved dirt  
U.S. Route State Route

U.S.G.S.  
FIVE COPY  
TOPOGRAPHIC DIVISION

MOSCOW, OHIO-KY.  
SW 1/4 FELICITY 15' QUADRANGLE  
N3845-W8407.5/7.5  
1953  
AMS 4161 1 SW-SERIES V852

2390  
MAR 11 1954