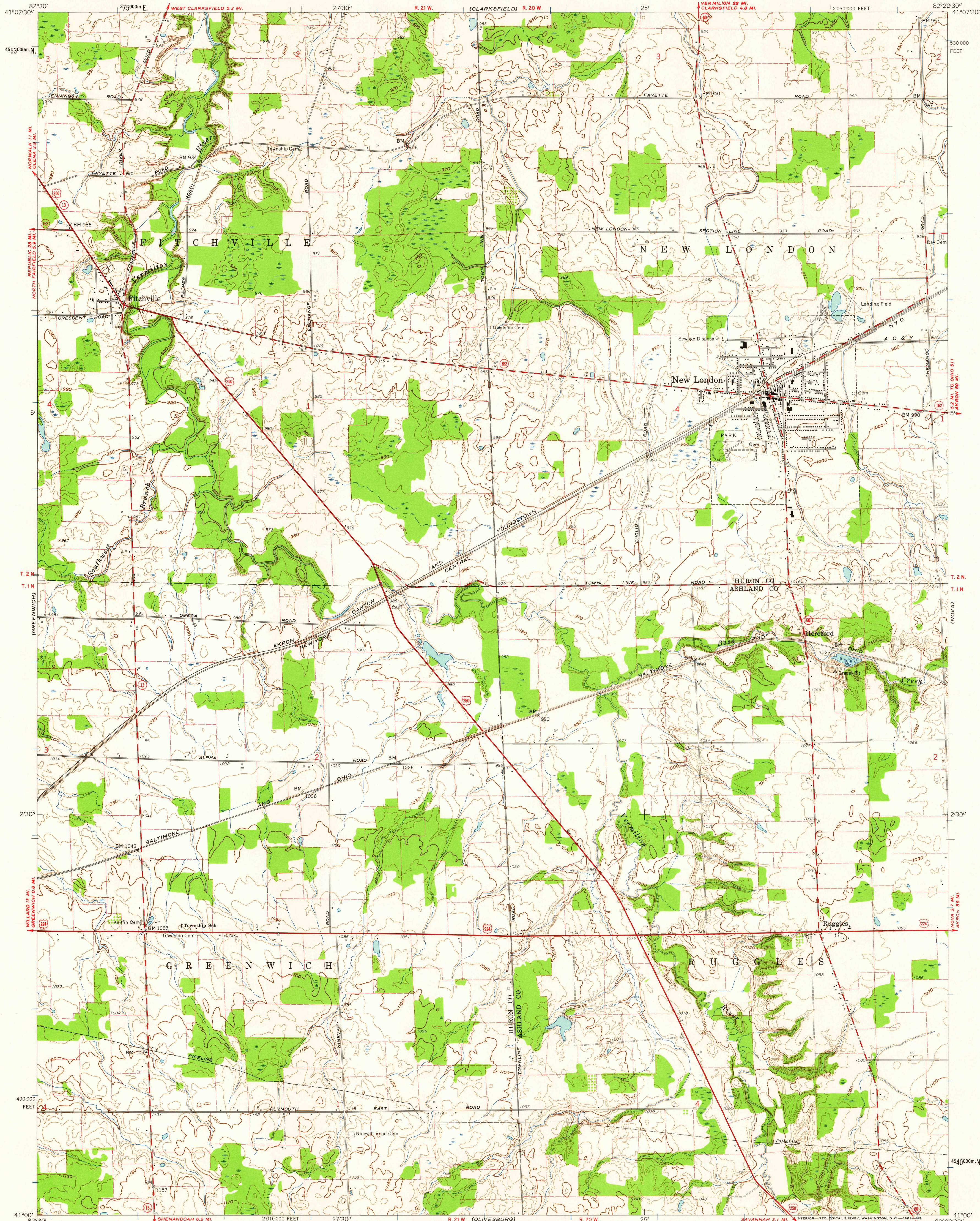


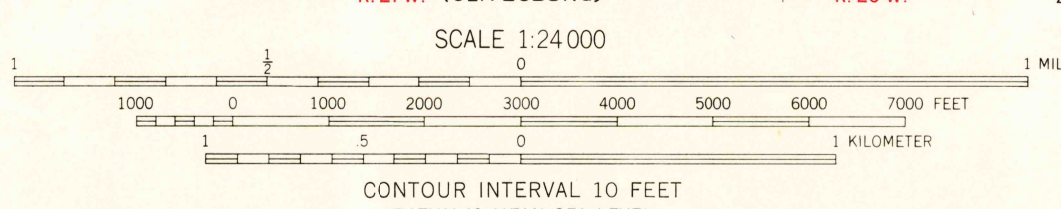
UNITED STATES  
DEPARTMENT OF THE INTERIOR  
GEOLOGICAL SURVEY

STATE OF OHIO  
DEPARTMENT OF HIGHWAYS  
DEPARTMENT OF NATURAL RESOURCES  
DIVISION OF GEOLOGICAL SURVEY

NEW LONDON QUADRANGLE  
OHIO  
7.5 MINUTE SERIES (TOPOGRAPHIC)  
SW 1/4 NEW LONDON 15' QUADRANGLE



Mapped, edited, and published by the Geological Survey  
Control by USGS and USC&GS  
Topography from aerial photographs by photogrammetric methods  
Aerial photographs taken 1959. Field check 1960  
Polyconic projection. 1927 North American datum  
10,000-foot grid based on Ohio coordinate system, north zone  
1000-meter Universal Transverse Mercator grid ticks,  
zone 17, shown in blue  
Entire area lies within the Connecticut Western Reserve  
Dotted land lines established by private subdivision  
of the Connecticut Western Reserve  
Fine red dashed lines indicate selected fence and field lines where  
generally visible on aerial photographs. This information is unchecked



USGS  
Historical File  
Topographic Division

ROAD CLASSIFICATION  
Heavy-duty ——— Light-duty ———  
Medium-duty ——— Unimproved dirt ———  
U. S. Route ——— State Route ———



NEW LONDON, OHIO  
SW 1/4 NEW LONDON 15' QUADRANGLE  
N4100-W8225/7.5

1960

FILE COPY  
TOPOGRAPHIC DIVISION

DEC 26 1961

1950