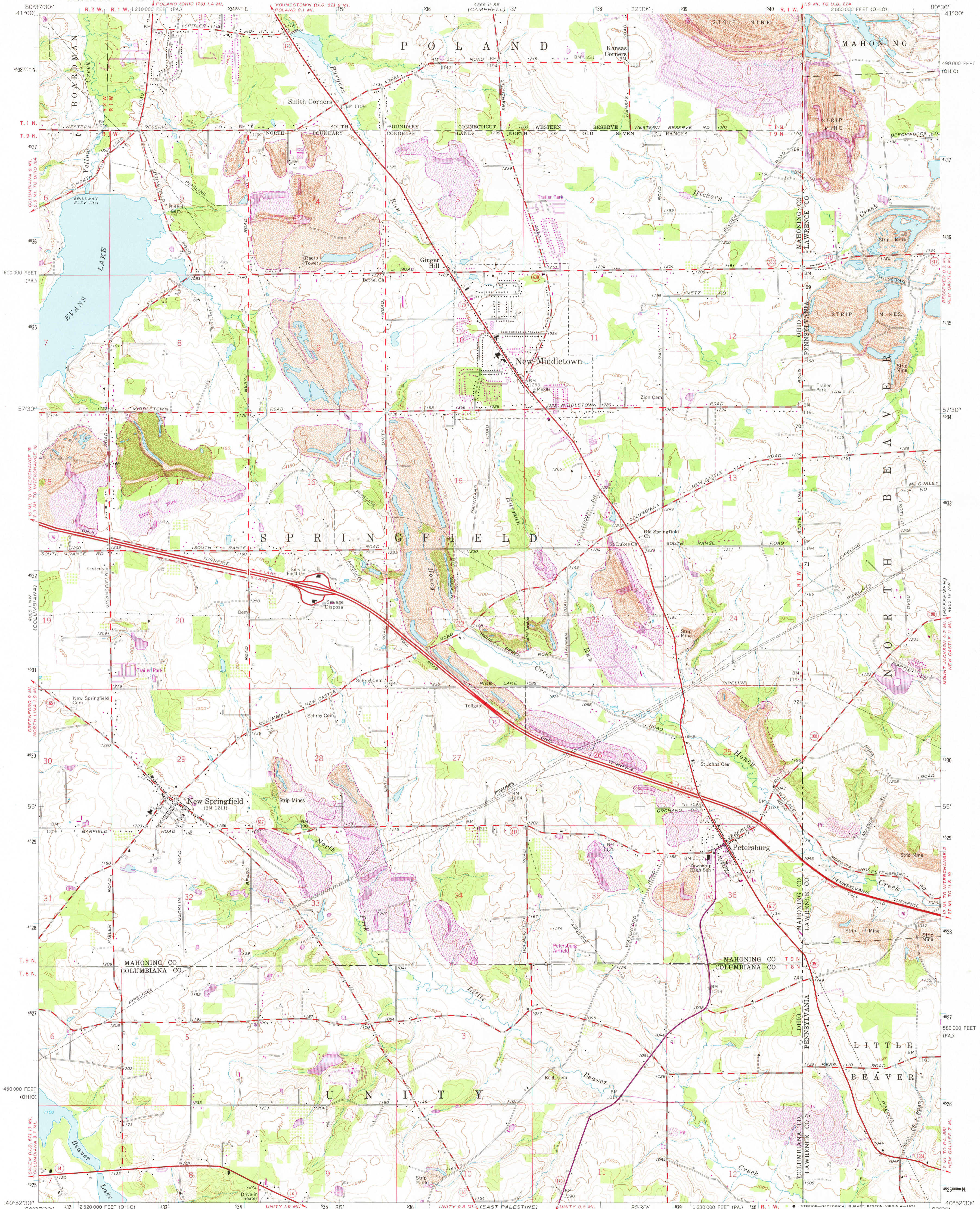
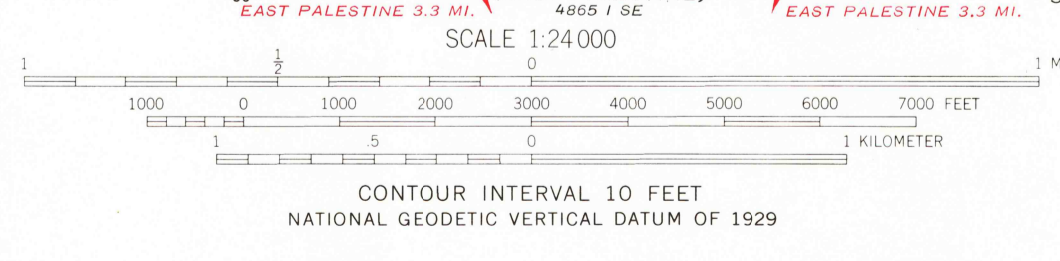
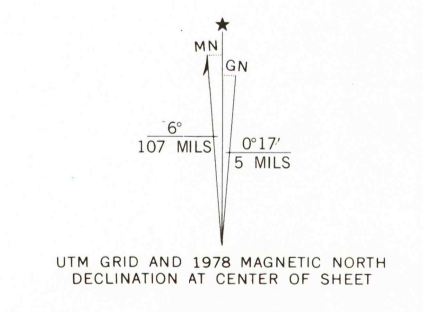


UNITED STATES  
DEPARTMENT OF THE INTERIOR  
GEOLOGICAL SURVEY

NEW MIDDLETOWN QUADRANGLE  
OHIO-PENNSYLVANIA  
7.5 MINUTE SERIES (TOPOGRAPHIC)



Mapped, edited, and published by the Geological Survey in cooperation with County of Mahoning. Revised in cooperation with State of Ohio agencies. Control by USGS, USC&GS, and County of Mahoning. Topography by photogrammetric methods from aerial photographs taken 1950. Field checked 1951. Revised by photogrammetric methods from aerial photographs taken 1962. Field checked 1963. Polyconic projection. 1927 North American datum. 10,000-foot grids based on Ohio coordinate system, north zone and Pennsylvania coordinate system, south zone. 1000-meter Universal Transverse Mercator grid ticks, zone 17, shown in blue. Fine red dashed lines indicate selected fence and field lines where generally visible on aerial photographs. This information is unchecked. Land lines within the Connecticut Western Reserve established by private subdivision. Land lines within Congress Lands North of the Old Seven Ranges based on the Ohio River Base.



ROAD CLASSIFICATION

Heavy-duty	Light-duty
Medium-duty	Unimproved dirt
Interstate Route	State Route



USGS Historical File  
Topographic Division  
NEW MIDDLETOWN, OHIO-PA.  
N4052.5-W8030.7.5

THIS MAP COMPLIES WITH NATIONAL MAP ACCURACY STANDARDS FOR SALE BY U.S. GEOLOGICAL SURVEY, RESTON, VIRGINIA 22092. A FOLDER DESCRIBING TOPOGRAPHIC MAPS AND SYMBOLS IS AVAILABLE ON REQUEST.

Revisions shown in purple compiled in cooperation with State of Ohio agencies from aerial photographs taken 1976. Map edited 1978. This information not field checked.

1963  
PHOTOREVISED 1978  
AMS 4865 1 NE-SERIES V852

DEC 1 1 1978

3950