



Mapped, edited, and published by the Geological Survey
Control by USGS and USC&GS

Topography by photogrammetric methods from aerial
photographs taken 1960. Field checked 1961

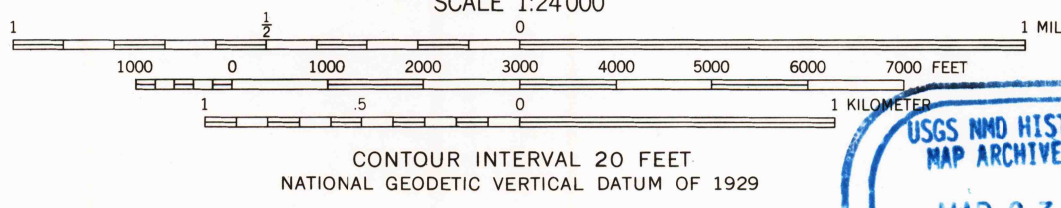
Polyconic projection. 1927 North American datum
10,000-foot grid based on Ohio coordinate system, south zone
1000-meter Universal Transverse Mercator grid ticks,
zone 17, shown in blue

The difference between 1927 North American Datum and North
American Datum of 1983 (NAD 83) for 7.5-minute intersections
is given in USGS Bulletin 1875. The NAD 83 is shown by
dashed corner ticks

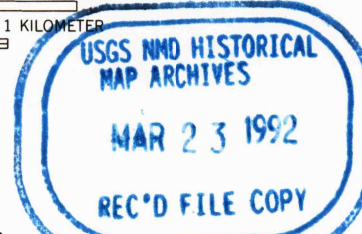
Unlabeled wells are oil wells
Land lines based on the Ohio River Base
Dotted land lines established by private subdivision
of the Ohio Company Purchase

There may be private inholdings within the boundaries of
the National or State reservations shown on this map

Map photocopied 1987
No major culture or drainage changes observed



THIS MAP COMPLIES WITH NATIONAL MAP ACCURACY STANDARDS
FOR SALE BY U.S. GEOLOGICAL SURVEY
DENVER, COLORADO 80225, OR RESTON, VIRGINIA 22092
A FOLDER DESCRIBING TOPOGRAPHIC MAPS AND SYMBOLS IS AVAILABLE ON REQUEST



ROAD CLASSIFICATION
Medium-duty ——— Light-duty ———
Unimproved dirt ———
State Route ———

NEW STRAITSVILLE, OHIO

39082-E2-TF-024
PHOTOINSPECTED 1987
1961
PHOTOREVISED 1985
DMA 4563 II SW-SERIES V852