

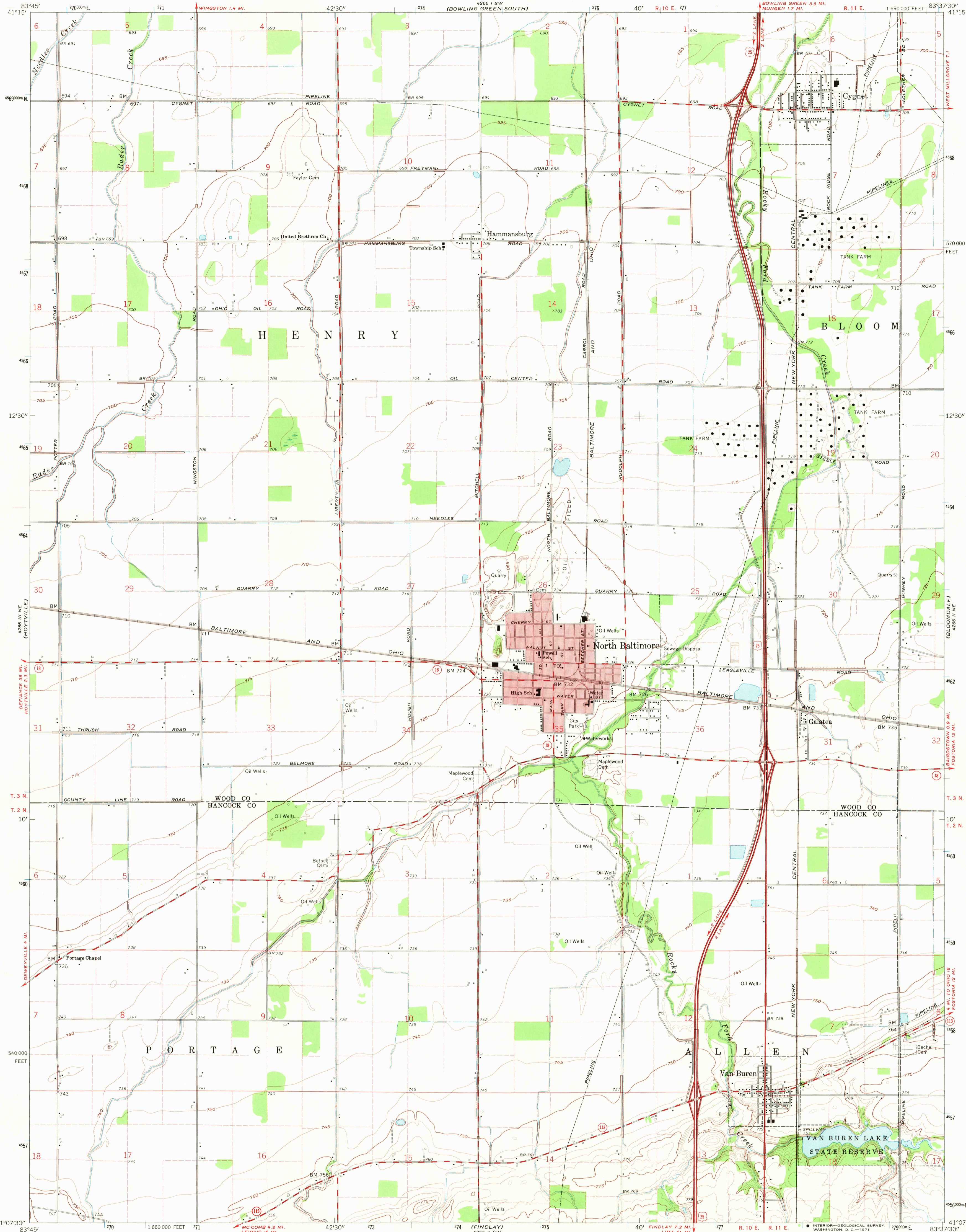
4266 15 SE
(WESTON)

UNITED STATES
DEPARTMENT OF THE INTERIOR
GEOLOGICAL SURVEY

STATE OF OHIO
DEPARTMENT OF HIGHWAYS
DEPARTMENT OF NATURAL RESOURCES
DIVISION OF GEOLOGICAL SURVEY

NORTH BALTIMORE QUADRANGLE
OHIO
7.5 MINUTE SERIES (TOPOGRAPHIC)

4266 15 SE
(LERRY CITY)



Mapped, edited, and published by the Geological Survey

Control by USGS and USC&GS

Culture and drainage in part compiled from aerial photographs taken 1959. Topography by planetable surveys 1960

Polyconic projection. 1927 North American datum 10,000-foot grid based on Ohio coordinate system, north zone 1000-meter Universal Transverse Mercator grid ticks, zone 17, shown in blue

Red tint indicates area in which only landmark buildings are shown

Entire area lies within Congress Lands

Land lines based on the First Principal Meridian

Fine red dashed lines indicate selected fence and field lines where generally visible on aerial photographs. This information is unchecked

UTM GRID AND 1960 MAGNETIC NORTH DECLINATION AT CENTER OF SHEET

SCALE 1:24,000

CONTOUR INTERVAL 5 FEET
DATUM IS MEAN SEA LEVEL

USGS
Historical File
Topographic Division

U.S.G.S.
FILE COPY
TOPOGRAPHIC DIVISION

ROAD CLASSIFICATION
Heavy-duty
Medium-duty
Light-duty
Unimproved dirt
U.S. Route
State Route

QUADRANGLE LOCATION

NORTH BALTIMORE, OHIO
NW 1/4 FINDLAY 15' QUADRANGLE
N 4107.5-W 8337.5/7.5

1960

AMS 4266 11 NW-SERIES V852

THIS MAP COMPLIES WITH NATIONAL MAP ACCURACY STANDARDS
FOR SALE BY U. S. GEOLOGICAL SURVEY, WASHINGTON, D. C. 20242
A FOLDER DESCRIBING TOPOGRAPHIC MAPS AND SYMBOLS IS AVAILABLE ON REQUEST

2485

DEC 22 1970