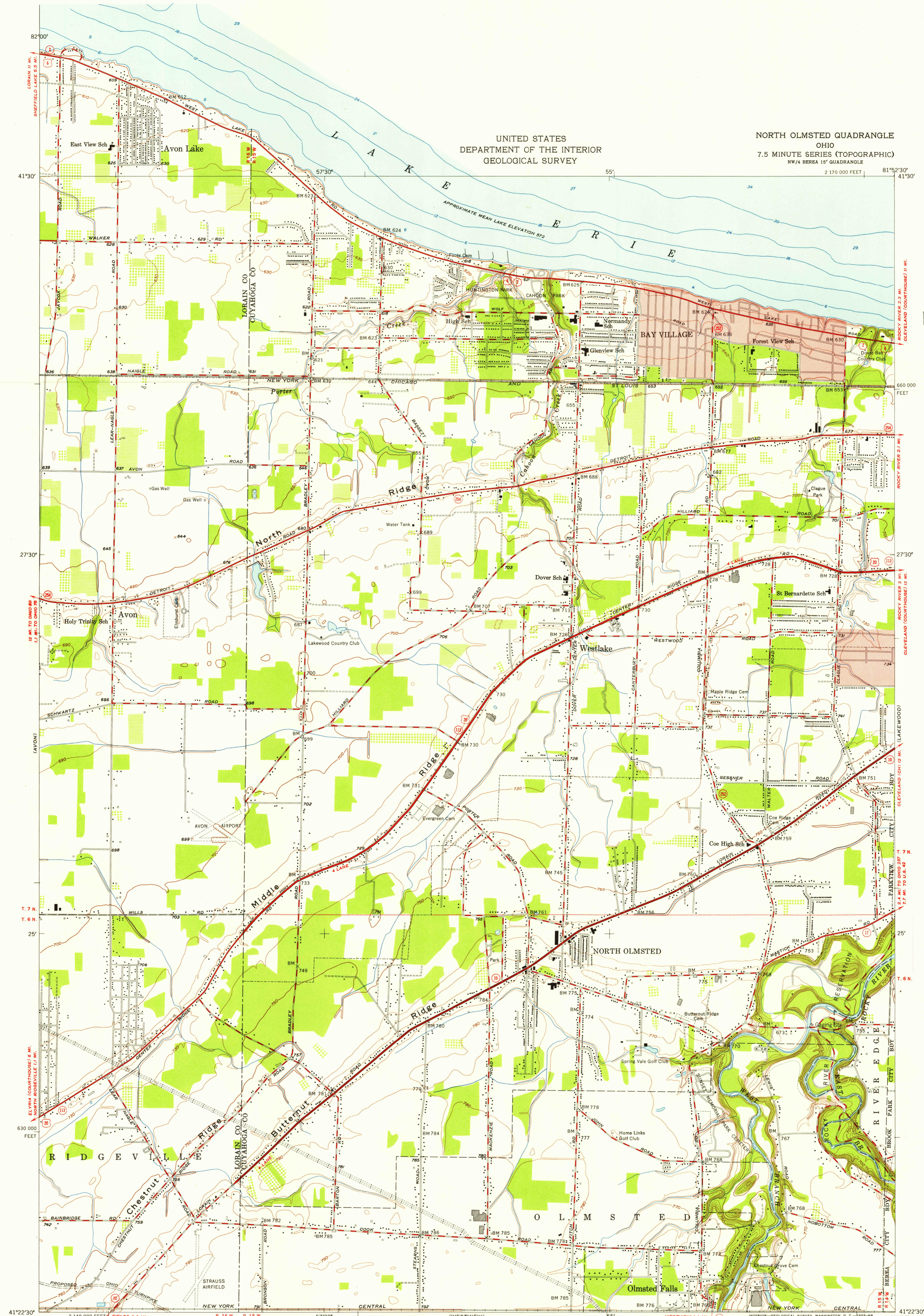


UNITED STATES
DEPARTMENT OF THE INTERIOR
GEOLOGICAL SURVEY

NORTH OLMSTED QUADRANGLE
OHIO
7.5 MINUTE SERIES (TOPOGRAPHIC)
NW/4 BEREA 15' QUADRANGLE
2 170 000 FEET

U.S.G.S.
FILE COPY
TOPOGRAPHIC DIVISION



Maped, edited, and published by the Geological Survey
Control by USGS, USC&GS, and Cleveland Regional Geodetic Survey
Culture and drainage in part compiled from aerial photographs
taken 1952. Topography by plane-table surveys 1953
Hydrography from U.S. Lake Survey Charts 35 (1:80,000) and 354 (1:10,000)
Polyconic projection. 1927 North American datum
10,000-foot grid based on Ohio coordinate system,
north zone
Red tint indicates areas in which only
landmark buildings are shown
Entire area lies within the Connecticut Western Reserve
Land lines were established by the Connecticut Land Company

SCALE 1:24000
CONTOUR INTERVAL 10 FEET
DATUM IS MEAN SEA LEVEL
DEPTH CURVES AND SOUNDINGS IN FEET—DATUM IS 570 FEET
APPROXIMATE MEAN DECLINATION, 1953
THIS MAP COMPLIES WITH NATIONAL MAP ACCURACY STANDARDS
FOR SALE BY U. S. GEOLOGICAL SURVEY, WASHINGTON, D. C.
A FOLDER DESCRIBING TOPOGRAPHIC MAPS AND SYMBOLS IS AVAILABLE ON REQUEST

ROAD CLASSIFICATION
Heavy-duty 4 LANE 15 LANE Light-duty
Medium-duty 4 LANE 15 LANE Unimproved dirt
U. S. Route State Route
USGS
Historical File
Topographic Division
NORTH OLMSTED, OHIO
NW/4 BEREA 15' QUADRANGLE
N4122.5-W8152.5/7.5
1953
QUADRANGLE LOCATION

U.S.G.S.
FILE COPY
TOPOGRAPHIC DIVISION

MAY 13 1955