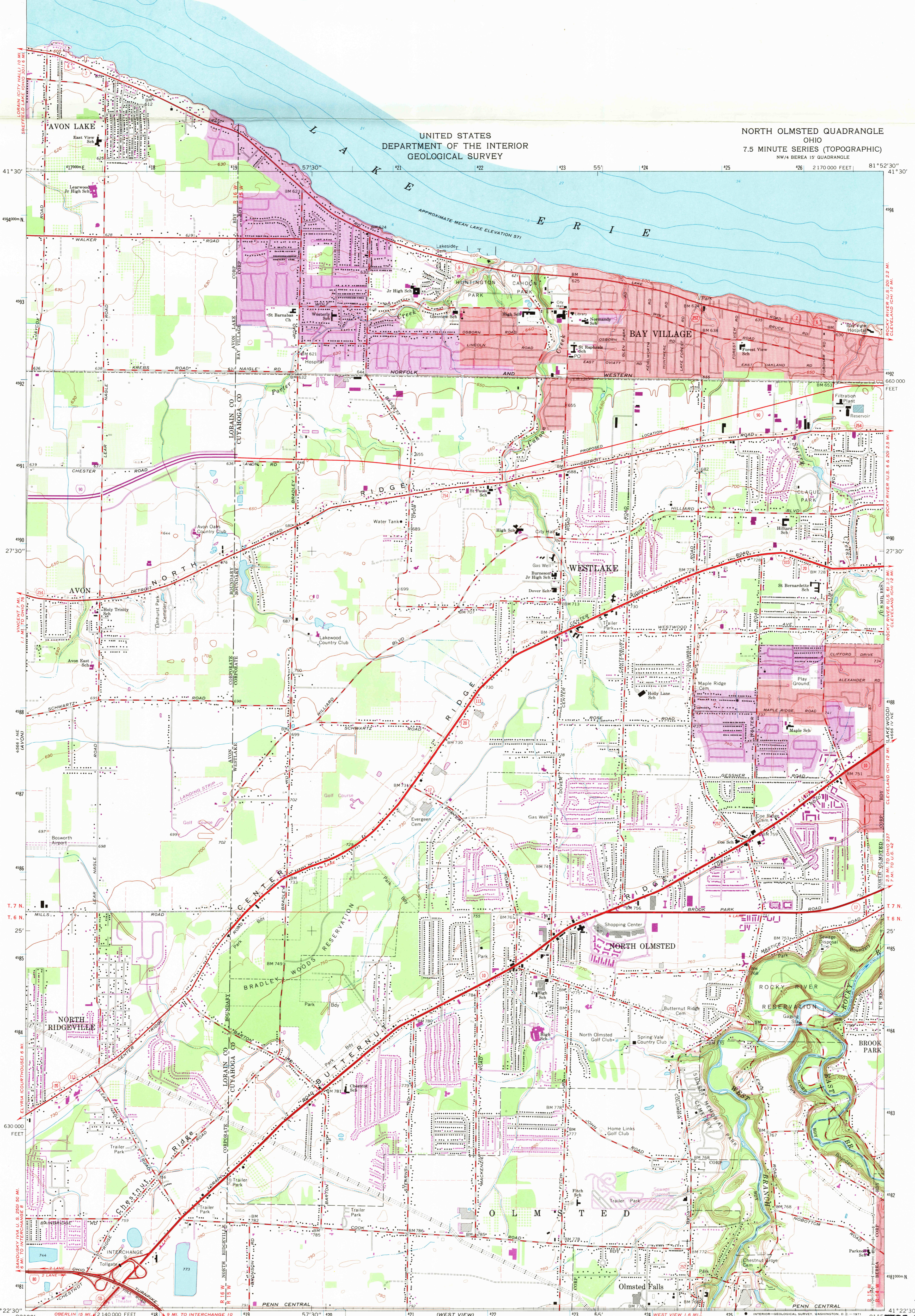
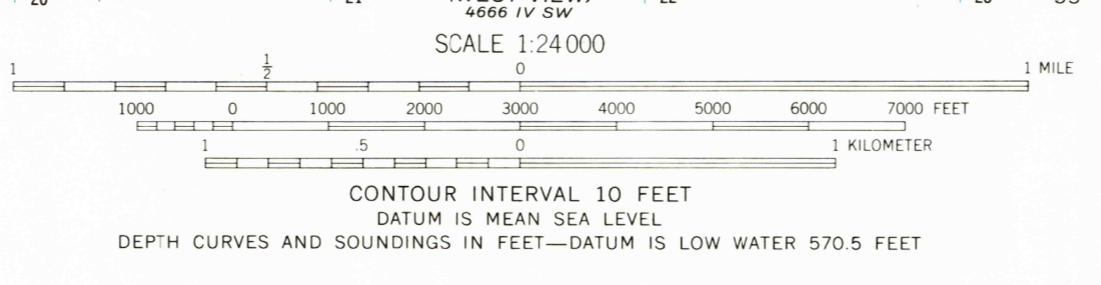


UNITED STATES  
DEPARTMENT OF THE INTERIOR  
GEOLOGICAL SURVEY

NORTH OLMSTED QUADRANGLE  
OHIO  
7.5 MINUTE SERIES (TOPOGRAPHIC)  
NW/4 BEREAS 15 QUADRANGLE  
2 170 000 FEET



Mapped, edited, and published by the Geological Survey  
Revised in cooperation with State of Ohio agencies  
Control by USGS, USC&GS, and Cleveland Regional Geodetic Survey  
Planimetry by photogrammetric methods from aerial photographs  
taken 1952. Topography by planimetric surveys 1953. Revised  
from aerial photographs taken 1962. Field checked 1963.  
Selected hydrographic data compiled from U. S. Lake Survey Charts 35 and  
354 (1959). This information is not intended for navigational purposes  
Polyconic projection. 1927 North American datum  
10,000-foot grid based on Ohio coordinate system, north zone  
1000-meter Universal Transverse Mercator grid ticks,  
zone 17, shown in blue  
Fine red dashed lines indicate selected fence and field lines where  
generally visible on aerial photographs. This information is unchecked  
Red tint indicates areas in which only landmark buildings are shown  
Entire area lies within the Connecticut Western Reserve  
Dotted land lines established by private subdivision of the  
Connecticut Western Reserve



USGS  
Historical File  
Topographic Division

ROAD CLASSIFICATION

Heavy-duty	Light-duty
Medium-duty	Unimproved dirt
Interstate Route	U. S. Route
	State Route



NORTH OLMSTED, OHIO  
NW/4 BEREAS 15 QUADRANGLE  
N4122.5-W8152.5/7.5  
1963  
PHOTOREVISED 1970  
AMS 4666 IV NW-SERIES V852

THIS MAP COMPLIES WITH NATIONAL MAP ACCURACY STANDARDS  
FOR SALE BY U. S. GEOLOGICAL SURVEY, WASHINGTON, D. C. 20242  
A FOLDER DESCRIBING TOPOGRAPHIC MAPS AND SYMBOLS IS AVAILABLE ON REQUEST

U.S.G.S.  
FILE COPY  
TOPOGRAPHIC DIVISION

3640  
JUN 11 1971