

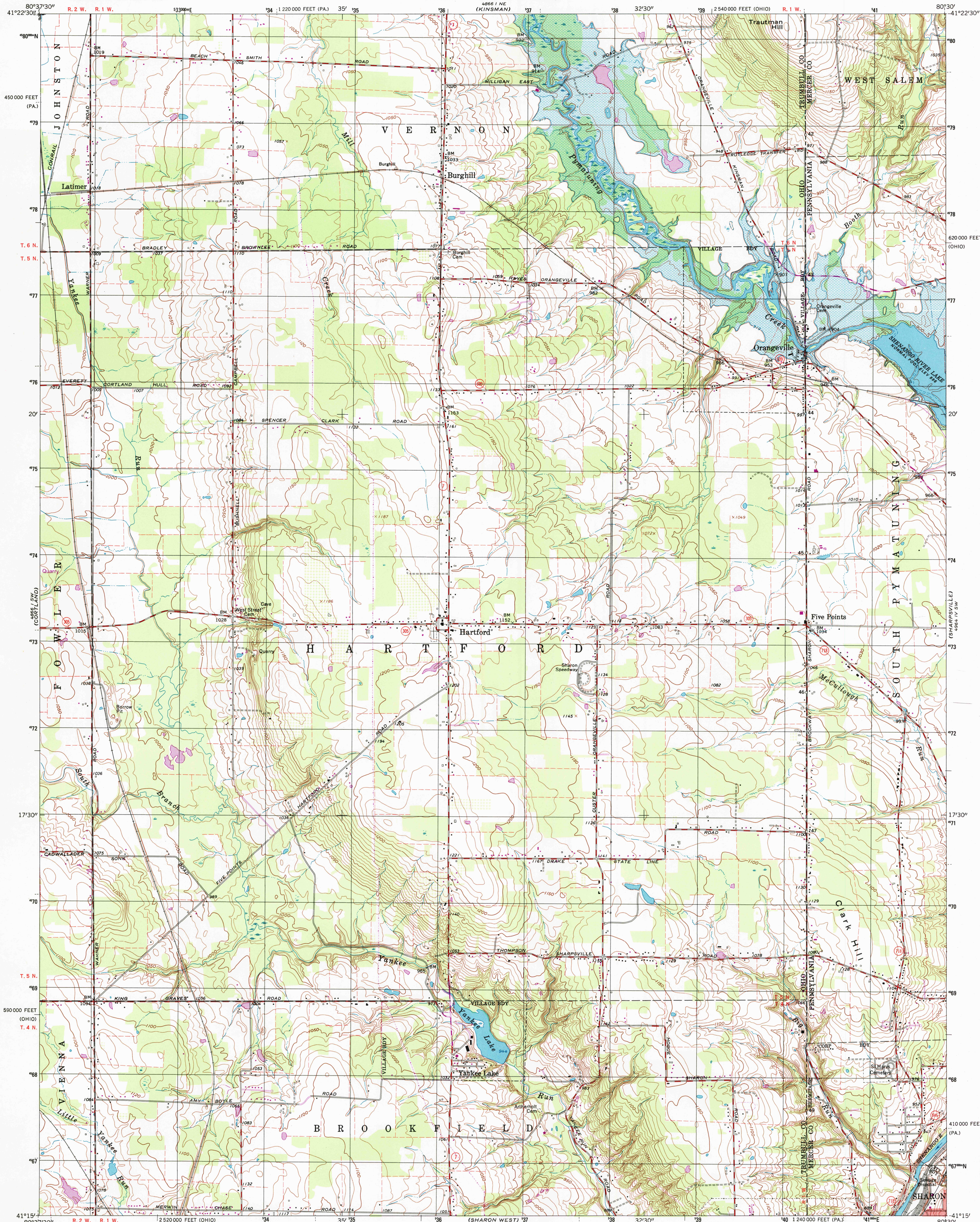
4866 I NW  
(GUSTAVUS)

UNITED STATES  
DEPARTMENT OF THE INTERIOR  
GEOLOGICAL SURVEY

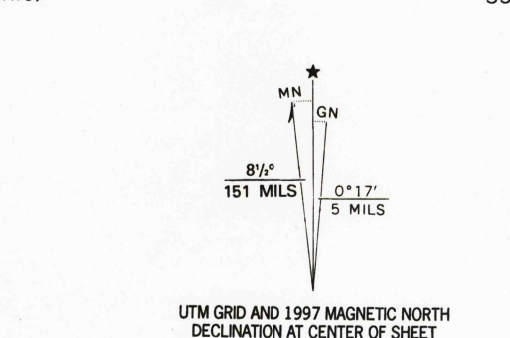
STATE OF OHIO  
DEPARTMENT OF TRANSPORTATION  
DEPARTMENT OF NATURAL RESOURCES  
DIVISION OF GEOLOGICAL SURVEY

ORANGEVILLE QUADRANGLE  
OHIO-PENNSYLVANIA  
7.5 MINUTE SERIES (TOPOGRAPHIC)

4866 I V W  
(GREENVILLE WEST)



Produced by the United States Geological Survey  
Topography compiled 1961. Planimetry derived from imagery taken 1977. Photospotted using imagery dated 1994; no major culture or drainage changes observed. Survey control current as of 1961  
Boundaries, other than corporate, revised 1997  
North American Datum of 1927 (NAD 27)  
Projection: Ohio coordinate system, north zone (Lambert conformal conic)  
10 000-foot ticks: Ohio coordinate system, north zone and Pennsylvania coordinate system, north zone  
1000-meter Universal Transverse Mercator grid, zone 17  
North American Datum of 1983 (NAD 83) is shown by dashed corner ticks. The values of the shift between NAD 27 and NAD 83 for 7.5-minute intersections are obtainable from National Geodetic Survey NADCON software  
Ohio area lies within the Connecticut Western Reserve. Land lines established by private subdivision of the Connecticut Western Reserve  
Areas covered by dashed light-blue pattern are subject to controlled inundation  
Information shown in purple may not meet USGS content standards and may conflict with previously mapped contours



SCALE 1:24 000  
CONTOUR INTERVAL 10 FEET  
NATIONAL GEODETIC VERTICAL DATUM OF 1929  
TO CONVERT FROM FEET TO METERS, MULTIPLY BY 0.3048



ROAD CLASSIFICATION  
Primary highway, hard surface  
Secondary highway, hard surface  
Light-duty road, hard or improved surface  
Unimproved road  
Interstate Route  
U.S. Route  
State Route

ORANGEVILLE, OHIO - PA.

1994

DMA 4866 I SE - SERIES V852

USGS AND HISTORICAL  
MAP RESOURCES  
MAY 3 1 1998  
REC'D FILE COPY

ISBN 0-607-87426-0  
9 780607 874266