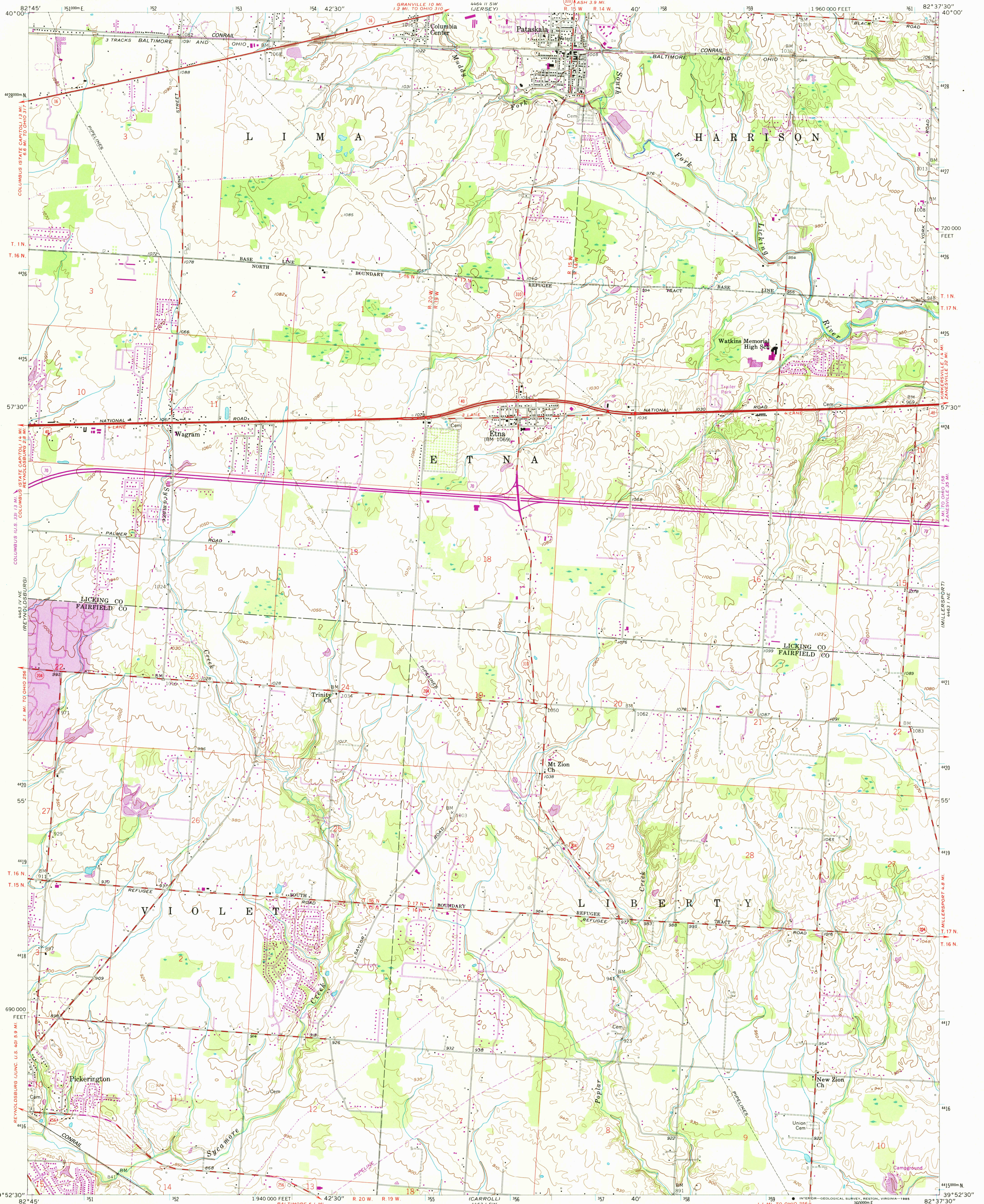


UNITED STATES
DEPARTMENT OF THE INTERIOR
GEOLOGICAL SURVEY

PATASKALA QUADRANGLE
OHIO
7.5 MINUTE SERIES (TOPOGRAPHIC)



Mapped, edited, and published by the Geological Survey

Control by USGS and NOS/NOAA

Topography from aerial photographs by Kelsh plotter

Aerial photographs taken 1955. Field check 1958

Polyconic projection. 1927 North American datum

10,000-foot grid based on Ohio coordinate system,

south zone 1000-meter Universal Transverse Mercator grid ticks,

zone 17, shown in blue

Land lines south of the Base Line based on the

Ohio River Base. Area north of the Base Line lies

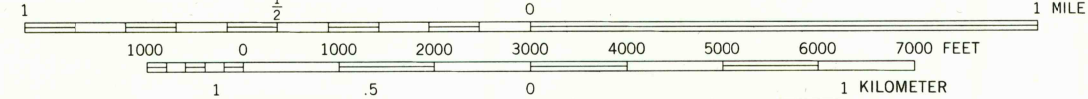
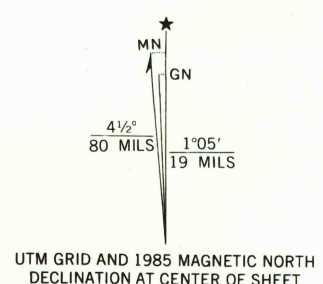
within the United States Military District

Unchecked elevations are shown in brown

To place on the predicted North American Datum 1983,

move the projection lines 3 meters south and

10 meters west as shown by dashed corner ticks



CONTOUR INTERVAL 10 FEET
NATIONAL GEODETIC VERTICAL DATUM OF 1929

THIS MAP COMPLIES WITH NATIONAL MAP ACCURACY STANDARDS
FOR SALE BY U. S. GEOLOGICAL SURVEY, RESTON, VIRGINIA 22092
A FOLDER DESCRIBING TOPOGRAPHIC MAPS AND SYMBOLS IS AVAILABLE ON REQUEST

Revisions shown in purple compiled in cooperation with
State of Ohio agencies from aerial photographs taken
1983. This information not field checked. Map edited 1985
Purple tint indicates extension of urban areas

ROAD CLASSIFICATION	
Heavy-duty	Light-duty
Medium-duty	Unimproved dirt
Interstate Route	U. S. Route
	State Route

PATASKALA, OHIO

39082-H6-TF-024

1958

PHOTOREVISED 1985

DMA 4463 1 NW-SERIES V852