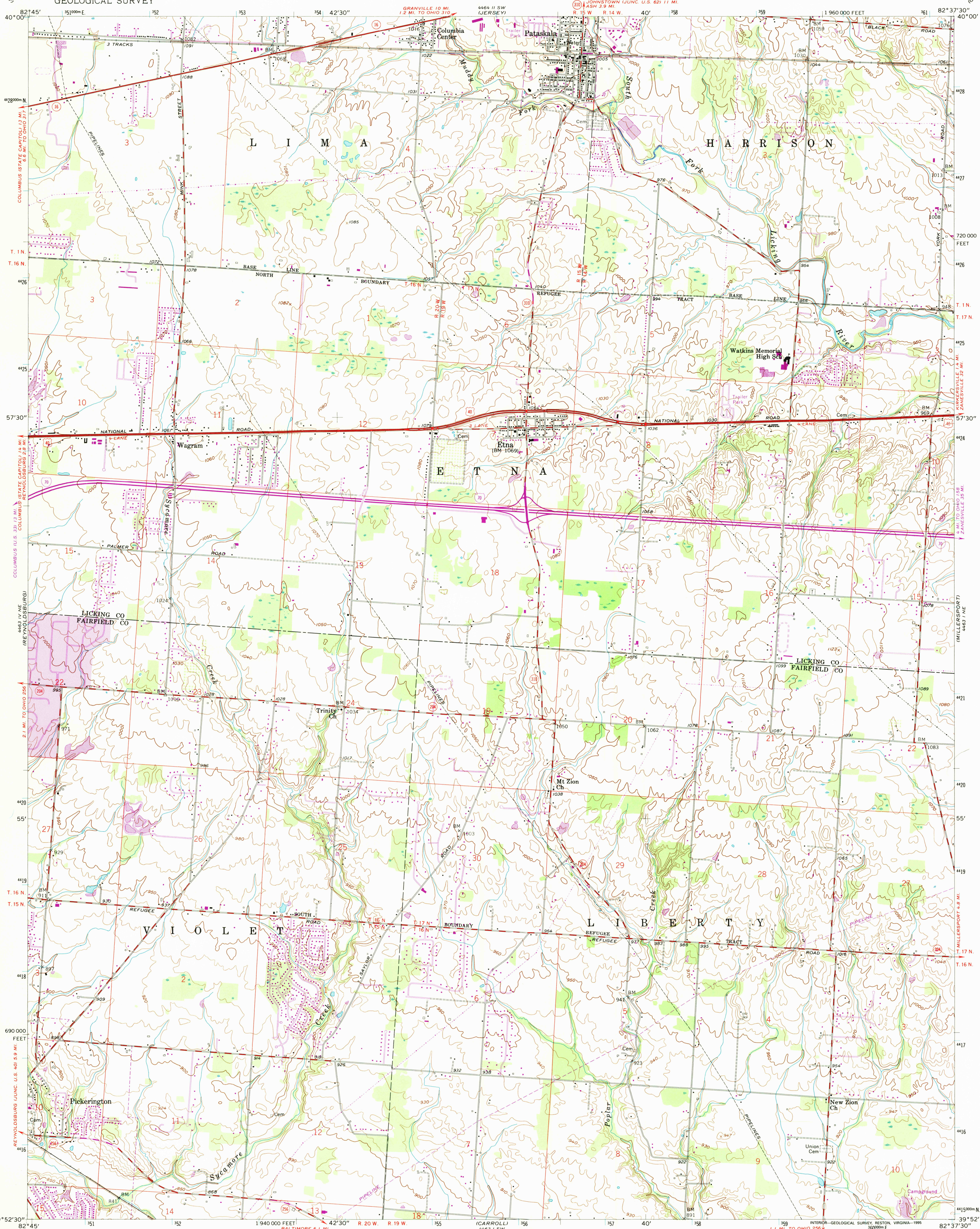


UNITED STATES  
DEPARTMENT OF THE INTERIOR  
GEOLOGICAL SURVEY

PATASKALA QUADRANGLE  
OHIO  
7.5 MINUTE SERIES (TOPOGRAPHIC)



Produced by the U. S. Geological Survey  
Compiled by photogrammetric methods from imagery dated 1955  
Field checked 1958  
Photorevised using imagery dated 1992, no major culture or drainage  
changes observed. Boundaries and names revised 1995  
North American Datum of 1927 (NAD 27). Projection and  
10 000-foot ticks: Ohio coordinate system, south zone  
(Lambert conformal conic)  
Blue 1000-meter Universal Transverse Mercator grid ticks, zone 17  
North American Datum of 1983 (NAD 83) is shown by dashed  
corner ticks. The values of the shift between NAD 27 and NAD 83  
for 7.5-minute intersections are obtainable from National Geodetic  
Survey NADCON software  
Land lines south of the Base Line based on the Ohio River Base  
Area north of the Base Line lies within the United States Military District  
Unchecked elevations are shown in brown

UTM GRID AND 1995 MAGNETIC NORTH  
DECLINATION AT CENTER OF SHEET

SCALE 1:24 000  
CONTOUR INTERVAL 10 FEET  
NATIONAL GEODETIC VERTICAL DATUM OF 1929

U.S. GEOLOGICAL SURVEY  
JUN 15 1995  
REC'D FILE COPY



ROAD CLASSIFICATION  
Heavy-duty ——— Light-duty ———  
Medium-duty ——— Unimproved dirt ———  
Interstate Route U. S. Route State Route

PATASKALA, OH  
39082-H6-TF-024  
1992

DMA 4463 1 NW-SERIES H6S2

Revisions shown in purple compiled in cooperation with  
State of Ohio agencies from aerial photographs taken 1983  
This information not field checked. Map edited 1985  
Purple tint indicates extension of urban areas

