

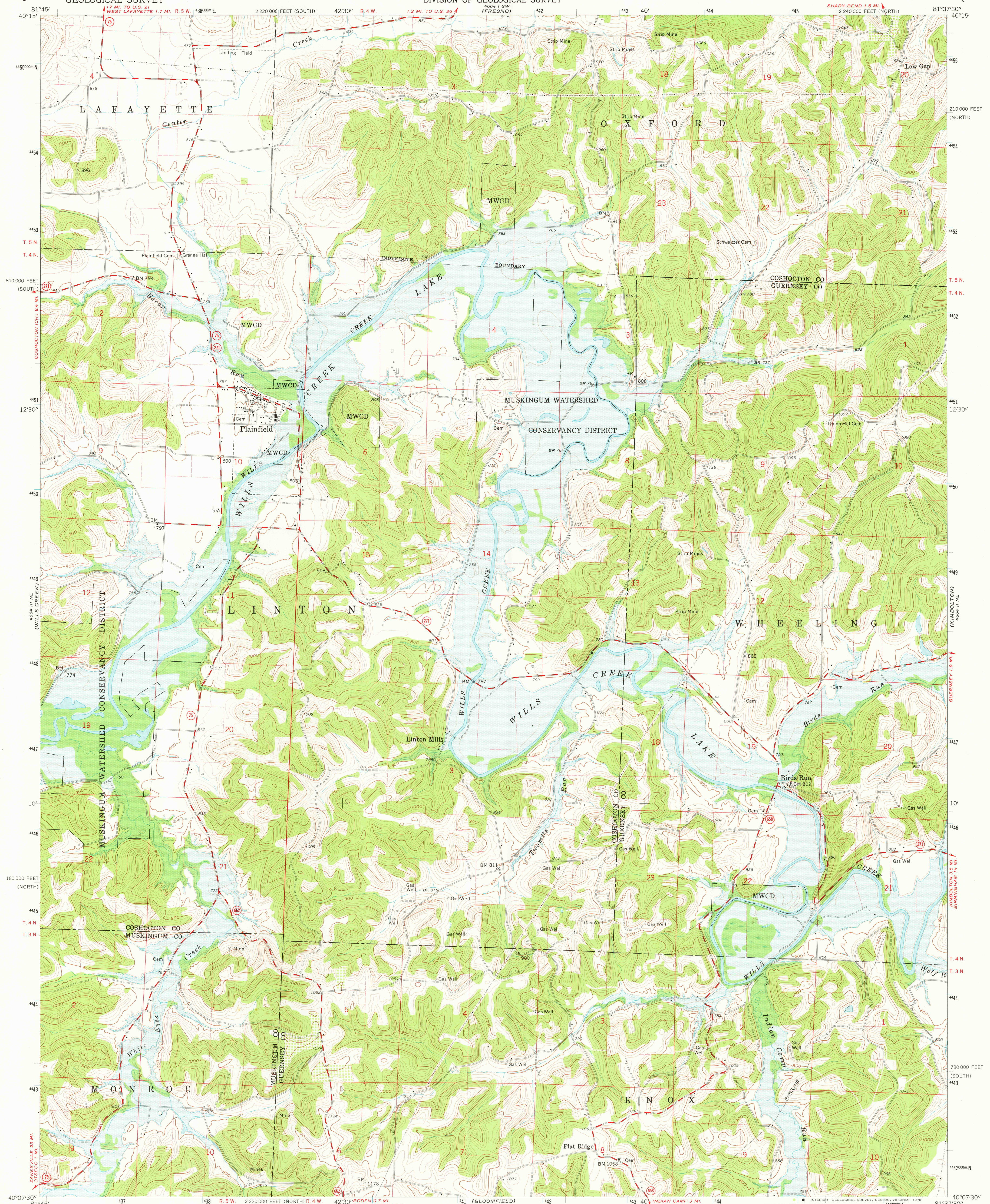
4664 11 NE
(COSHOCTON)

UNITED STATES
DEPARTMENT OF THE INTERIOR
GEOLOGICAL SURVEY

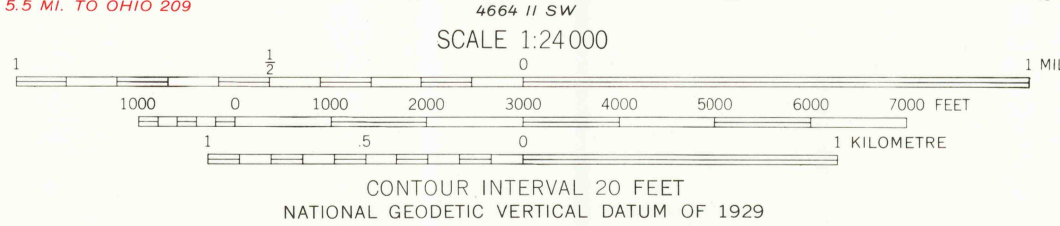
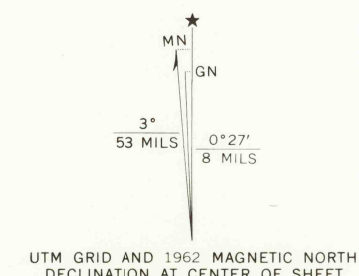
STATE OF OHIO
DEPARTMENT OF TRANSPORTATION
DEPARTMENT OF NATURAL RESOURCES
DIVISION OF GEOLOGICAL SURVEY

PLAINFIELD QUADRANGLE
OHIO
7.5 MINUTE SERIES (TOPOGRAPHIC)

4664 1 SE
(NEWCOMETOWN)



Mapped, edited, and published by the Geological Survey
Control by USGS and USC&GS
Topography by photogrammetric methods from aerial
photographs taken 1960. Field checked 1962
Polyconic projection, 1927 North American datum
10,000-foot grids based on Ohio coordinate system, north and south zones
1000-metre Universal Transverse Mercator grid ticks,
zone 17, shown in blue
Entire area lies within the United States Military District
Land lines based on the Base Line of the
United States Military District
Area covered by dashed light-blue pattern
is subject to controlled inundation
Fine red dashed lines indicate selected fence and field lines where
generally visible on aerial photographs. This information is unchecked



ROAD CLASSIFICATION
Medium-duty ——— Light-duty ———
Unimproved dirt ———
State Route

PLAINFIELD, OHIO
N4007.5-W8137.5/7.5
1962
AMS 4664 11 NW-SERIES V852

THIS MAP COMPLIES WITH NATIONAL MAP ACCURACY STANDARDS
FOR SALE BY U. S. GEOLOGICAL SURVEY, RESTON, VIRGINIA 22092
A FOLDER DESCRIBING TOPOGRAPHIC MAPS AND SYMBOLS IS AVAILABLE ON REQUEST

APR 09 1976