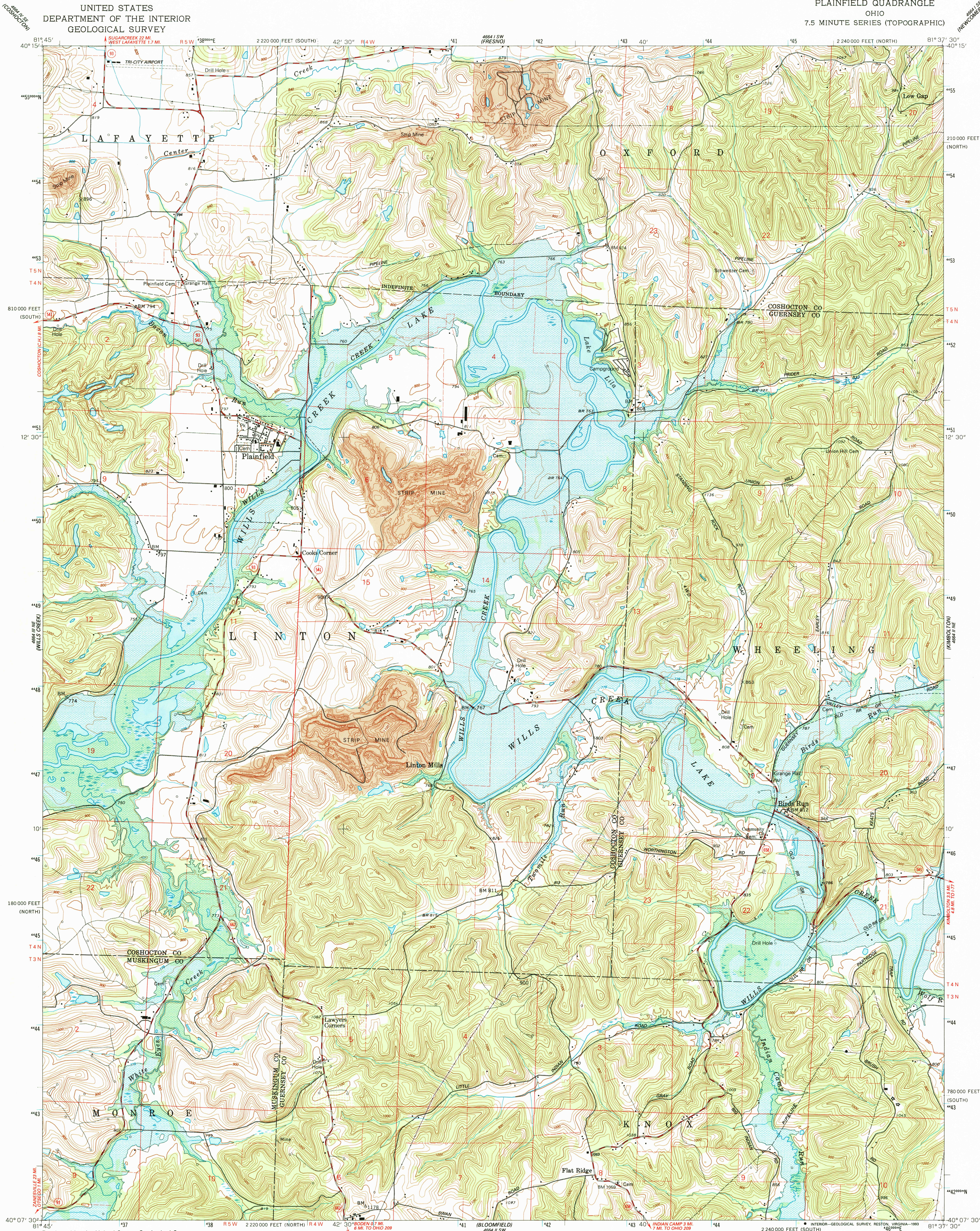
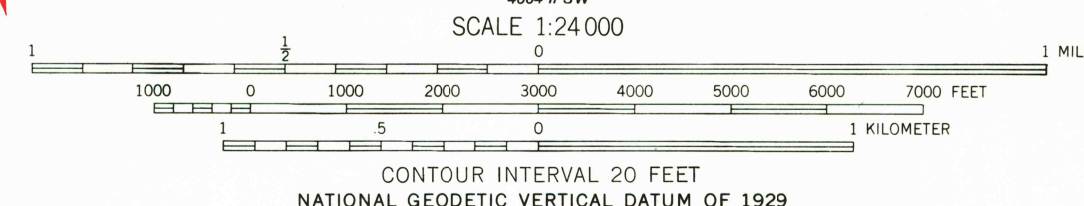
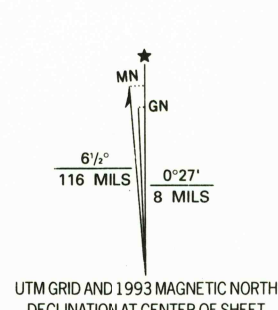


UNITED STATES
DEPARTMENT OF THE INTERIOR
GEOLOGICAL SURVEY

PLAINFIELD QUADRANGLE
OHIO
7.5 MINUTE SERIES (TOPOGRAPHIC)



Produced by the United States Geological Survey
in cooperation with State of Ohio agencies
Control by USGS and NOS/NOAA
Topography by photogrammetric methods from aerial photographs
taken 1960. Field checked 1962. Revised from aerial photographs
taken 1989. Field checked 1992. Map edited 1993
Universal Transverse Mercator projection
10,000-foot grid ticks: Ohio coordinate system, north and south zones
1000-meter Universal Transverse Mercator grid ticks, zone 17, shown in blue
1927 North American Datum (NAD 27)
North American Datum of 1983 (NAD 83) is shown by dashed corner ticks
The values of the shift between NAD 27 and NAD 83 for 7.5-minute
intersections are given in USGS Bulletin 1875
Unlabeled wells are gas wells
Entire area lies within the United States Military District
Land lines based on the Base Line of the United States Military District
Areas covered by dashed light-blue pattern
are subject to controlled inundation to 779 feet
Fine red dashed lines indicate selected fence and field lines where
generally visible on aerial photographs. This information is unchecked



| ROAD CLASSIFICATION | |
|---------------------------------|---|
| Primary highway, hard surface | Light-duty road, hard or improved surface |
| Secondary highway, hard surface | Unimproved road |
| Interstate Route | U.S. Route |
| | State Route |



PLAINFIELD, OHIO
40081-B6-TF-024
1993
DMA 4664 II NW—SERIES V852