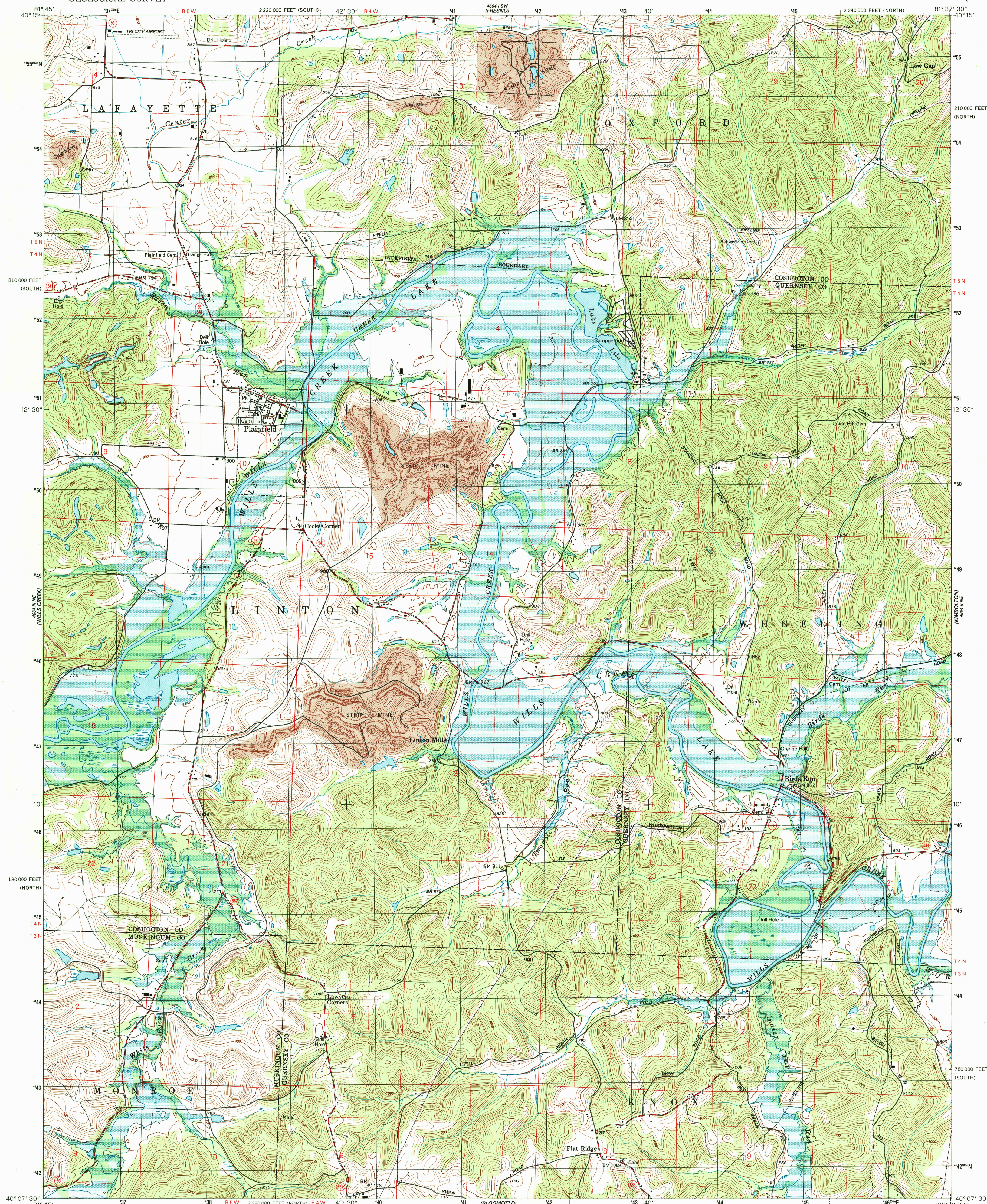


COGNITION

UNITED STATES
DEPARTMENT OF THE INTERIOR
GEOLOGICAL SURVEY

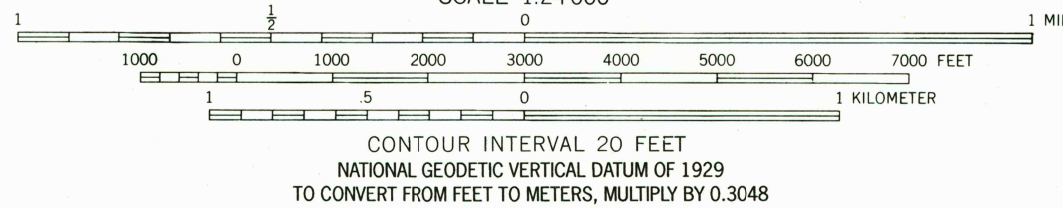
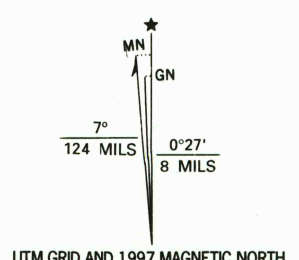
PLAINFIELD QUADRANGLE
OHIO
7.5 MINUTE SERIES (TOPOGRAPHIC)

NEWCOMERTOWN



USGS HISTORICAL
MAP ARCHIVES
MAY 3 1998
REC'D FILE COPY

Produced by the United States Geological Survey
Topography compiled 1960. Planimetry derived from imagery taken 1989. Photosinspected using imagery dated 1994; no major culture or drainage changes observed. Survey control current as of 1992. Boundaries, other than corporate, verified 1997.
North American Datum of 1927 (NAD 27). Projection and 1000-meter grid: Universal Transverse Mercator, zone 17. 10 000-foot ticks: Ohio coordinate system, north and south zones.
North American Datum of 1983 (NAD 83) is shown by dashed corner ticks. The values of the shift between NAD 27 and NAD 83 for 7.5-minute intersections are obtainable from National Geodetic Survey NADCON software.
Entire area lies within the United States Military District. Land lines based on the Base Line of the United States Military District.
Areas covered by dashed light-blue pattern are subject to controlled inundation to 779 feet.



ROAD CLASSIFICATION
Primary highway, hard surface
Secondary highway, hard surface
Light-duty road, hard or improved surface
Unimproved road
Interstate Route
U. S. Route
State Route

THIS MAP COMPLIES WITH NATIONAL MAP ACCURACY STANDARDS
FOR SALE BY U.S. GEOLOGICAL SURVEY, P.O. BOX 25286, DENVER, COLORADO 80225
A FOLDER DESCRIBING TOPOGRAPHIC MAPS AND SYMBOLS IS AVAILABLE ON REQUEST

PLAINFIELD, OHIO
1994
NIMA 4664 II NW - SERIES V852

