

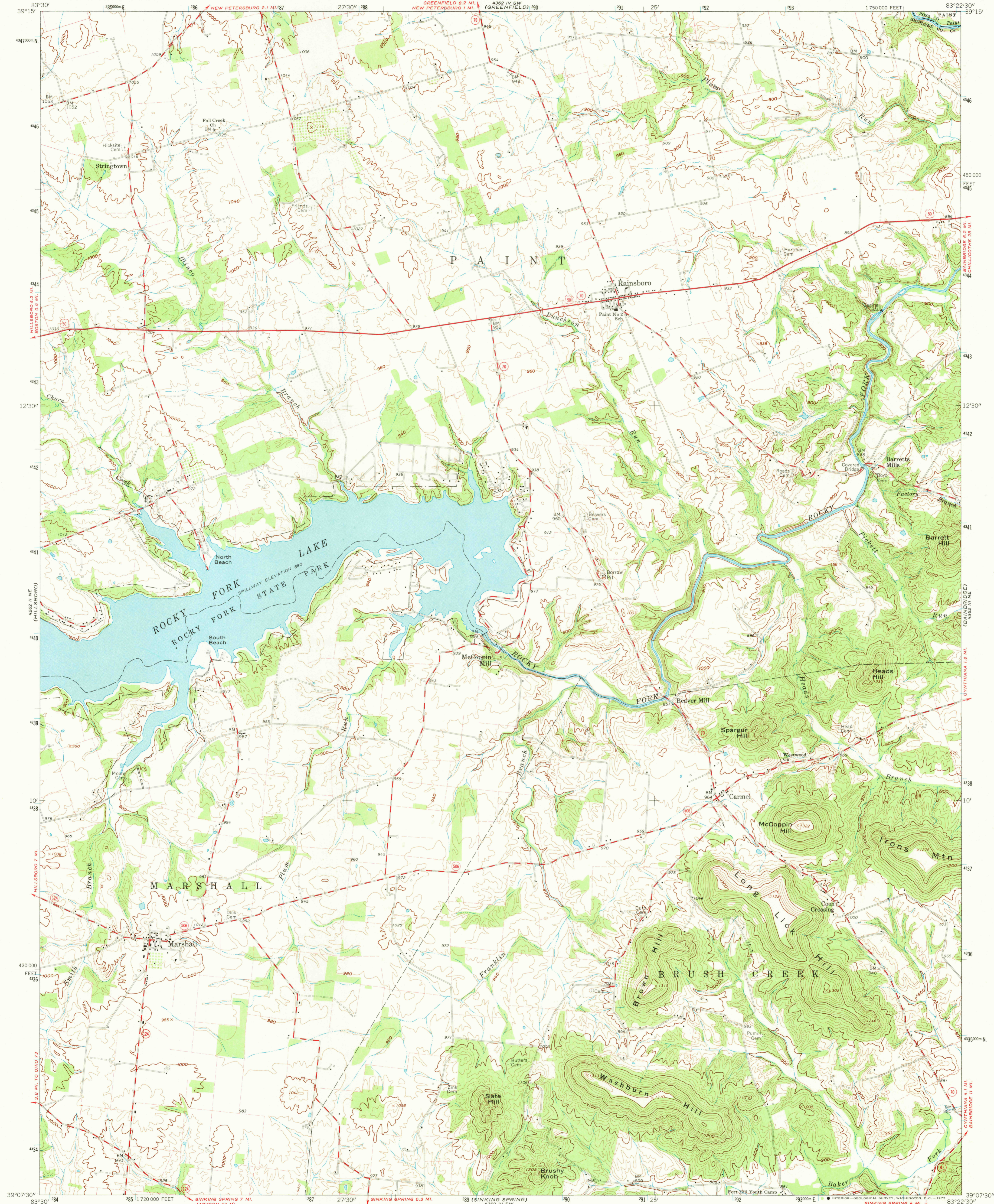
4262 1/2 SE (LEESBORO)

UNITED STATES  
DEPARTMENT OF THE INTERIOR  
GEOLOGICAL SURVEY

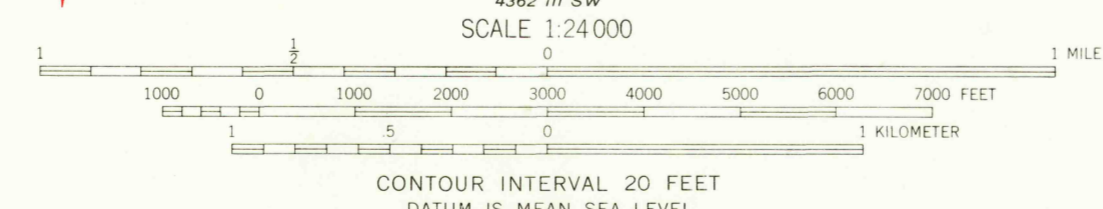
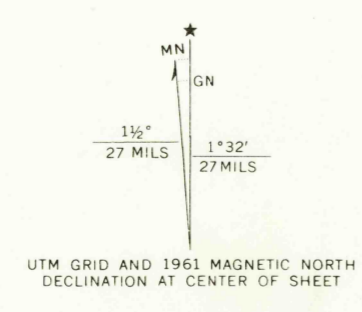
STATE OF OHIO  
DEPARTMENT OF HIGHWAYS  
DEPARTMENT OF NATURAL RESOURCES  
DIVISION OF GEOLOGICAL SURVEY

RAINSBORO QUADRANGLE  
OHIO  
7.5 MINUTE SERIES (TOPOGRAPHIC)

4262 1/2 SE (SOUTH SALEM)



Mapped, edited, and published by the Geological Survey  
Control by USGS and USC&GS  
Topography by photogrammetric methods from aerial photographs taken 1960. Field checked 1961  
Polyconic projection. 1927 North American datum  
10,000-foot grid based on Ohio coordinate system, south zone  
1000-meter Universal Transverse Mercator grid ticks, zone 17, shown in blue  
Fine red dashed lines indicate selected fence and field lines where generally visible on aerial photographs. This information is unchecked  
Entire area lies within the Virginia Military District



ROAD CLASSIFICATION

Heavy-duty	Light-duty
Medium-duty	Unimproved dirt
U. S. Route	State Route

RAINSBORO, OHIO  
N3907.5—W8322.5/7.5

JUL 31 1973

THIS MAP COMPLIES WITH NATIONAL MAP ACCURACY STANDARDS  
FOR SALE BY U. S. GEOLOGICAL SURVEY, WASHINGTON, D. C. 20242  
A FOLDER DESCRIBING TOPOGRAPHIC MAPS AND SYMBOLS IS AVAILABLE ON REQUEST

1961  
AMS 4362 III NW—SERIES V852

3780