

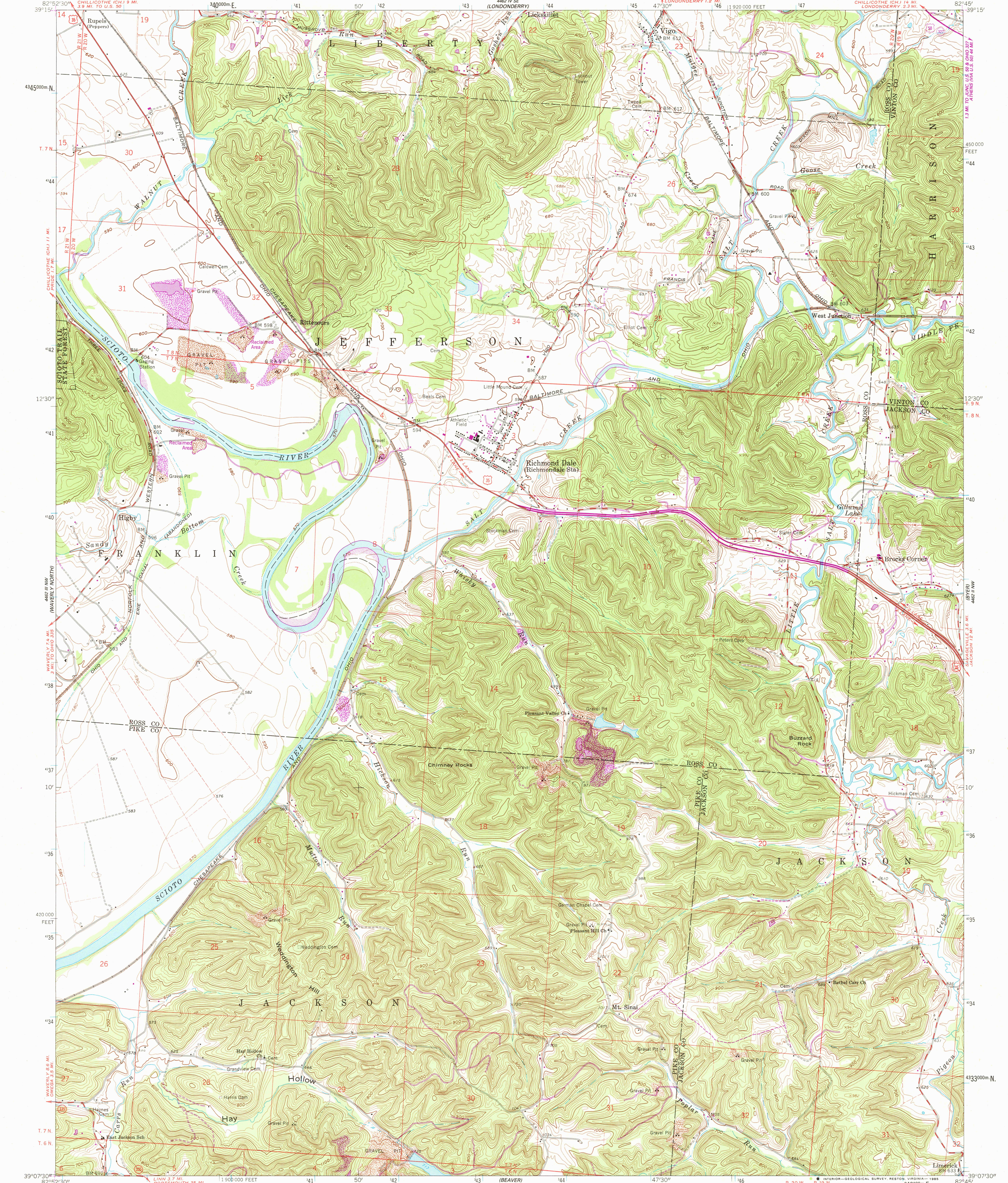
CHILLICOTHE EAST

UNITED STATES
DEPARTMENT OF THE INTERIOR
GEOLOGICAL SURVEY

STATE OF OHIO
DEPARTMENT OF HIGHWAYS
DEPARTMENT OF NATURAL RESOURCES
DIVISION OF GEOLOGICAL SURVEY

RICHMOND DALE QUADRANGLE
OHIO
7.5 MINUTE SERIES (TOPOGRAPHIC)

CHILLICOTHE WEST



Mapped, edited, and published by the Geological Survey
Control by USGS and USC&GS
Topography by photogrammetric methods from aerial
photographs taken 1960. Field checked 1961
Polyconic projection. 1927 North American datum
10,000-foot grid based on Ohio coordinate system, south zone
1000-meter Universal Transverse Mercator grid ticks,
zone 17, shown in blue
Area east of the Scioto River lies within Congress Lands east of
the Scioto River. Land lines based on the Ohio River Base
Area west of the Scioto River lies within
the Virginia Military District
To place on the predicted North American Datum 1983,
move the projection lines 4 meters south and
10 meters west as shown by dashed corner ticks

UTM GRID AND 1985 MAGNETIC NORTH
DECLINATION AT CENTER OF SHEET
There may be private inholdings within the boundaries of
the National or State reservations shown on this map

SCALE 1:24,000
CONTOUR INTERVAL 20 FEET
DOTTED LINES REPRESENT 10-FOOT CONTOURS
NATIONAL GEODETIC VERTICAL DATUM OF 1929
THIS MAP COMPLIES WITH NATIONAL MAP ACCURACY STANDARDS
FOR SALE BY U.S. GEOLOGICAL SURVEY, RESTON, VIRGINIA 22092
A FOLDER DESCRIBING TOPOGRAPHIC MAPS AND SYMBOLS IS AVAILABLE ON REQUEST

ROAD CLASSIFICATION
Heavy-duty ——— Light-duty ———
Medium-duty ——— Unimproved dirt ———
U.S. Route ——— State Route ———
RICHMOND DALE, OHIO
39082-87-TF-024
1961
PHOTOREVISED 1985
DMA 4462 III NE-SERIES V852

RETURN TO:
USGS AND HISTORICAL MAP ARCHIVES