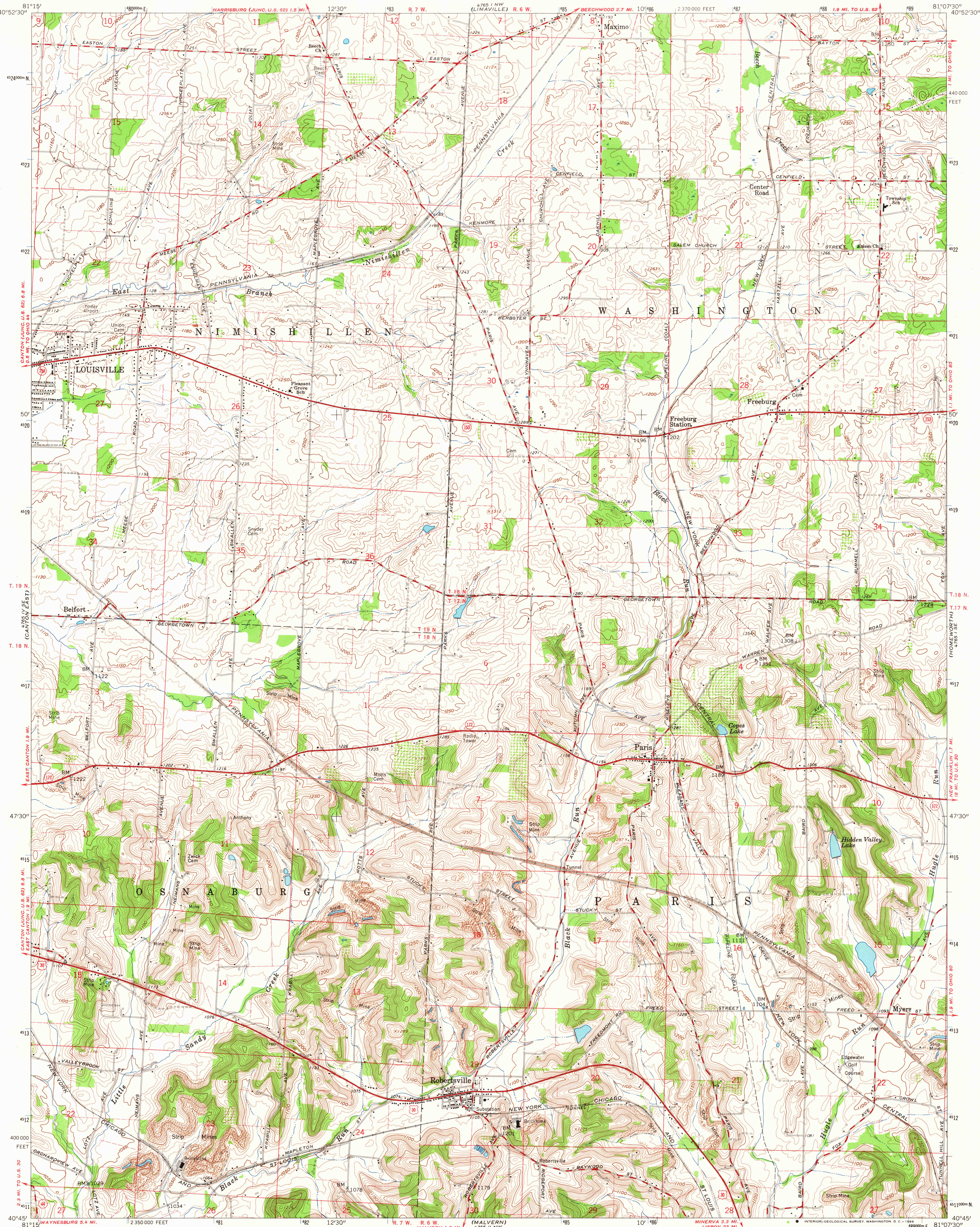
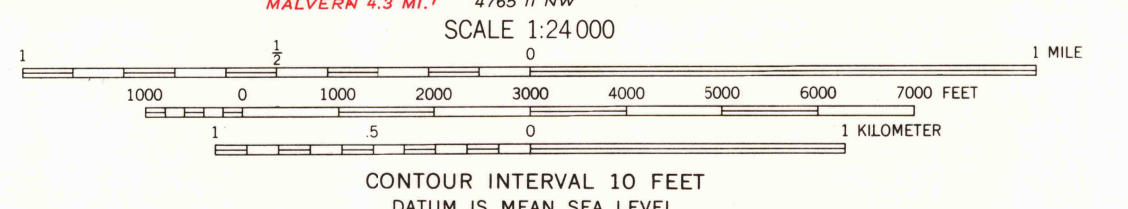
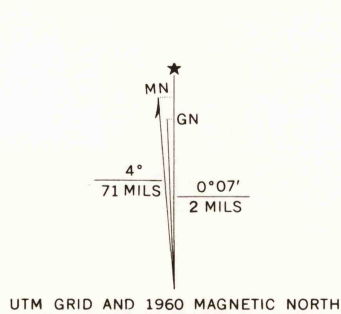


UNITED STATES  
DEPARTMENT OF THE INTERIOR  
GEOLOGICAL SURVEY

ROBERTSVILLE QUADRANGLE  
OHIO—STARK CO.  
7.5 MINUTE SERIES (TOPOGRAPHIC)  
SW 1/4 ALLIANCE 15' QUADRANGLE



Maped, edited, and published by the Geological Survey  
Control by USGS and USC&GS  
Topography from aerial photographs by photogrammetric methods  
Aerial photographs taken 1952. Field check 1960  
Polyconic projection. 1927 North American datum  
10,000-foot grid based on Ohio coordinate system, north zone  
1000-meter Universal Transverse Mercator grid ticks,  
zone 17, shown in blue  
Fine red dashed lines indicate selected fence and field lines where  
generally visible on aerial photographs. This information is unchecked  
Entire area lies within Congress Lands north of the Old Seven Ranges  
Land lines based on the Ohio River Base



USGS  
Historical File  
Topographic Division



ROAD CLASSIFICATION  
Heavy-duty ——— Light-duty ———  
Medium-duty ——— Unimproved dirt ———  
U.S. Route ——— State Route ———

U.S.G.S. ROBERTSVILLE, OHIO  
SW 1/4 ALLIANCE 15' QUADRANGLE  
N4045—W8107.5/7.5  
1960  
AMS 4765 1 SW—SERIES V852

THIS MAP COMPLIES WITH NATIONAL MAP ACCURACY STANDARDS  
FOR SALE BY U.S. GEOLOGICAL SURVEY, WASHINGTON, D.C. 20242  
A FOLDER DESCRIBING TOPOGRAPHIC MAPS AND SYMBOLS IS AVAILABLE ON REQUEST