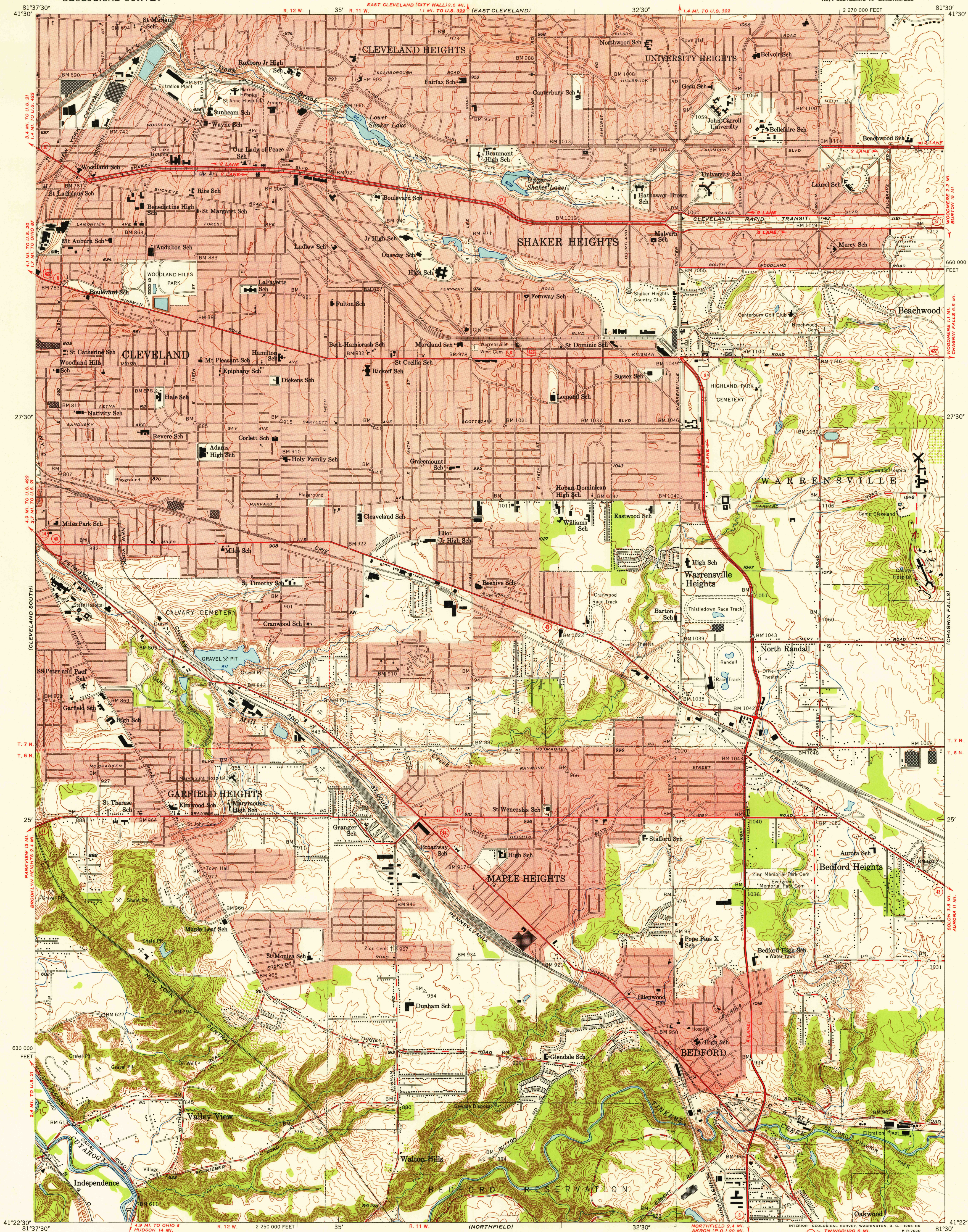


UNITED STATES
DEPARTMENT OF THE INTERIOR
GEOLOGICAL SURVEY

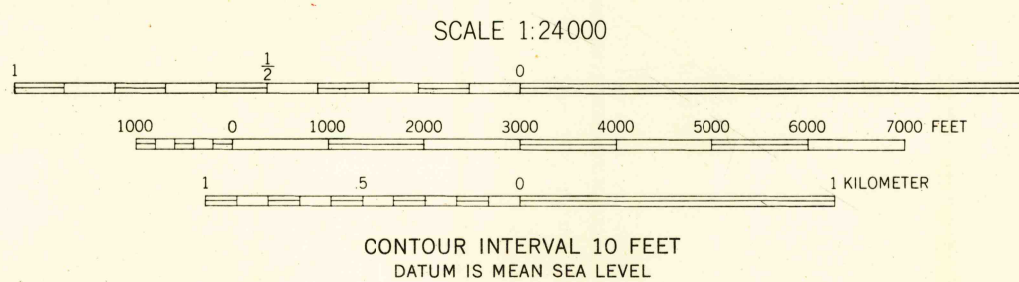
SHAKER HEIGHTS QUADRANGLE
OHIO-CUYAHOGA CO.
7.5 MINUTE SERIES (TOPOGRAPHIC)
NE/4 CLEVELAND 15' QUADRANGLE

U.S.G.S.
FILE COPY
TOPOGRAPHIC DIVISION



Mapped, edited, and published by the Geological Survey
Control by USGS, USC&GS, and Cleveland Regional Geodetic Survey
Topography from aerial photographs by Kelsch plotter
and by plane-table surveys 1953. Aerial photographs taken 1952.
Polyconic projection, 1927 North American datum
10,000-foot grid based on Ohio coordinate system,
north zone
Red tint indicates areas in which only
landmark buildings are shown
Entire area lies within the Connecticut Western Reserve
Land lines were established by the Connecticut Land Company

APPROXIMATE MEAN
DECLINATION 1953



THIS MAP COMPLIES WITH NATIONAL MAP ACCURACY STANDARDS
FOR SALE BY U. S. GEOLOGICAL SURVEY, WASHINGTON, 25, D. C.
A FOLDER DESCRIBING TOPOGRAPHIC MAPS AND SYMBOLS IS AVAILABLE ON REQUEST



ROAD CLASSIFICATION
Heavy-duty ——— 4 LANE 16 LANE Light-duty ———
Medium-duty ——— 4 LANE 16 LANE Unimproved dirt ———
U. S. Route ——— State Route ———

SHAKER HEIGHTS, OHIO
NE/4 CLEVELAND 15' QUADRANGLE
N4122.5-W8130/7.5

1953

U.S.G.S.
FILE COPY
TOPOGRAPHIC DIVISION

JUN 7 1955