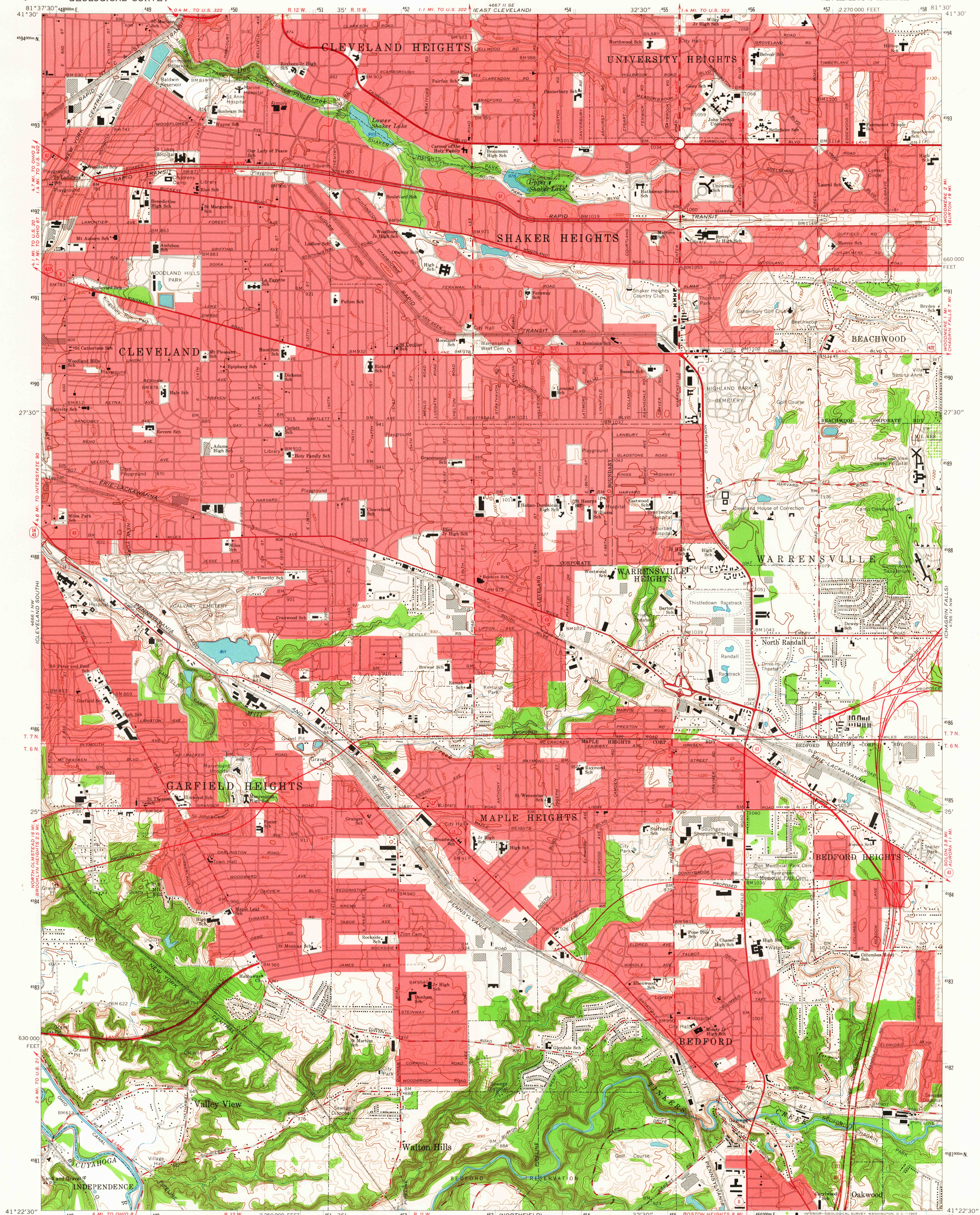
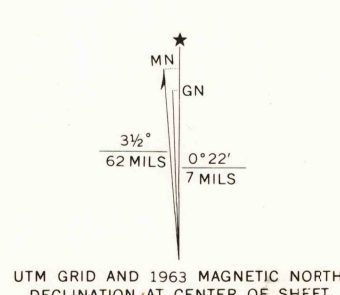


UNITED STATES  
DEPARTMENT OF THE INTERIOR  
GEOLOGICAL SURVEY

SHAKER HEIGHTS QUADRANGLE  
OHIO-CUYAHOGA CO.  
7.5 MINUTE SERIES (TOPOGRAPHIC)  
NE/4 CLEVELAND 15 QUADRANGLE



Mapped, edited, and published by the Geological Survey  
Revised in cooperation with State of Ohio agencies  
Control by USGS, USC&GS, and Cleveland Regional Geodetic Survey  
Topography by photogrammetric methods from aerial photographs  
taken 1952 and planimetric surveys 1953. Revised from aerial photographs taken  
1962. Field checked 1963  
Polyconic projection. 1927 North American datum  
10,000-foot grid based on Ohio coordinate system, north zone  
1000-meter Universal Transverse Mercator grid ticks,  
zone 17, shown in blue  
Fine red dashed lines indicate selected fence and field lines where  
generally visible on aerial photographs. This information is unchecked  
Red tint indicates areas in which only landmark buildings are shown  
Entire area lies within the Connecticut Western Reserve  
Dotted land lines established by private subdivision of the  
Connecticut Western Reserve



THIS MAP COMPLIES WITH NATIONAL MAP ACCURACY STANDARDS  
FOR SALE BY U. S. GEOLOGICAL SURVEY, WASHINGTON 25, D. C.  
A FOLDER DESCRIBING TOPOGRAPHIC MAPS AND SYMBOLS IS AVAILABLE ON REQUEST

USGS  
Historical File  
Topographic Division

ROAD CLASSIFICATION  
Heavy-duty ——— Light-duty ———  
Medium-duty ——— Unimproved dirt ———  
Interstate Route ——— U.S. Route ——— State Route ———

SHAKER HEIGHTS, OHIO  
NE/4 CLEVELAND 15 QUADRANGLE  
N4122.5-W8130.7.5

1963  
AMS 4666 I NE-SERIES V852

4250  
FEB. 5 1966  
U.S.G.S.  
FILE COPY  
TOPOGRAPHIC DIVISION