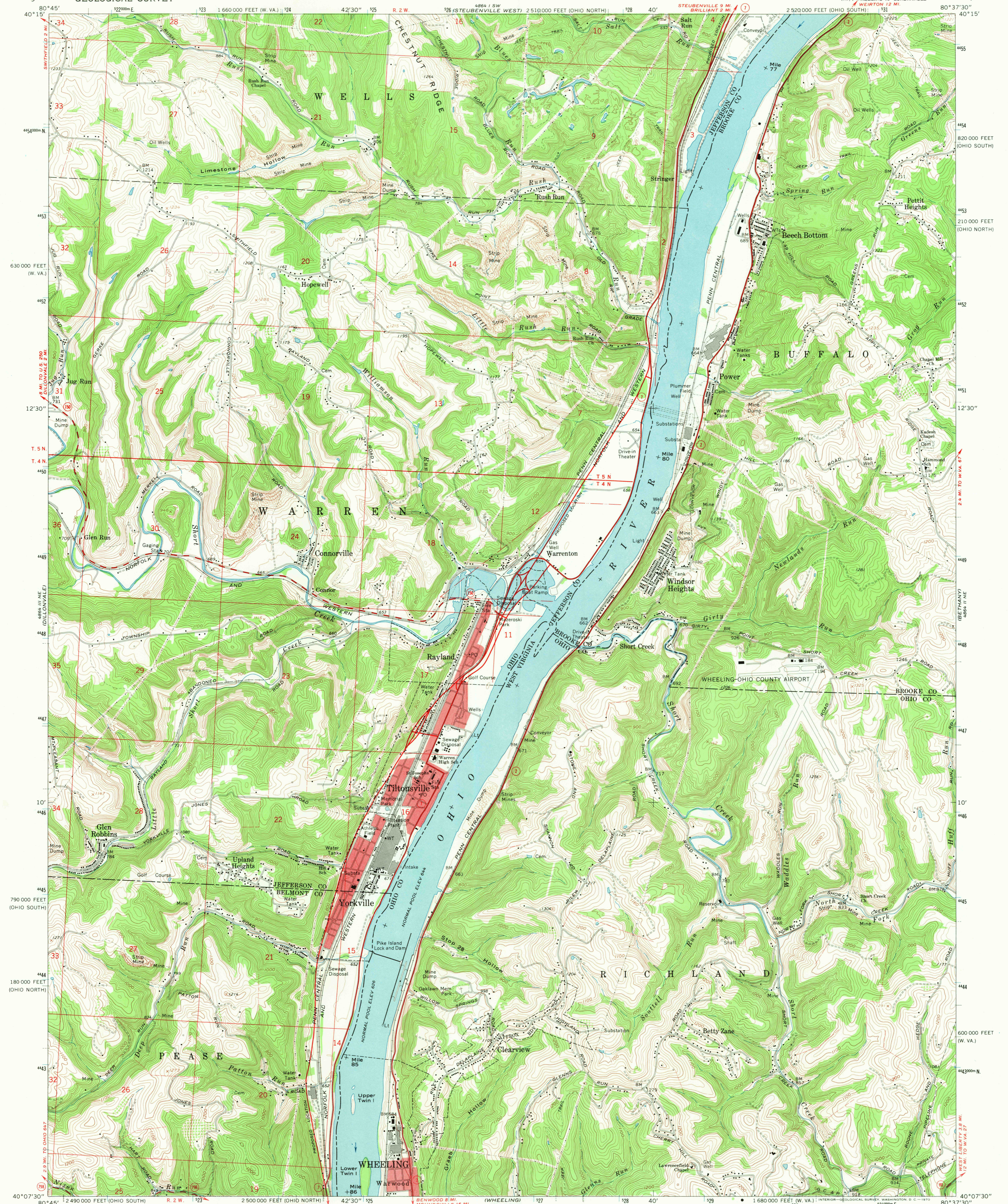


UNITED STATES
DEPARTMENT OF THE INTERIOR
GEOLOGICAL SURVEY

TILTONVILLE QUADRANGLE
OHIO - WEST VIRGINIA
7.5 MINUTE SERIES (TOPOGRAPHIC)



Maped, edited, and published by the Geological Survey
Revised in cooperation with State of Ohio agencies
Control by USGS, USC&GS, and USCE
Topography by photogrammetric methods from aerial photographs
taken 1954. Field checked 1957. Revised from aerial photographs
taken 1966. Field checked 1968
Polyconic projection. 1927 North American datum
10,000-foot grids based on Ohio coordinate system, north zone,
West Virginia coordinate system, north zone, and Ohio coordinate system,
south zone. 1000-meter Universal Transverse Mercator grid ticks, zone 17,
shown in blue
Fine red dashed lines indicate selected fence and field lines where
generally visible on aerial photographs. This information is unchecked
The state boundary as shown represents the approximate position of the
center of the water line as determined from U. S. Corps of Engineers
Ohio River Charts, surveyed 1913, and supplementary information
Red tint indicates areas in which only landmark buildings are shown
Ohio area lies within the Old Seven Ranges. Land lines based on the
Ohio River Base

UTM GRID AND 1983 MAGNETIC NORTH
DECLINATION AT CENTER OF SHEET

SCALE 1:24,000

CONTOUR INTERVAL 20 FEET
DATUM IS MEAN SEA LEVEL

THIS MAP COMPLIES WITH NATIONAL MAP ACCURACY STANDARDS
FOR SALE BY U.S. GEOLOGICAL SURVEY, WASHINGTON, D. C. 20242
A FOLDER DESCRIBING TOPOGRAPHIC MAPS AND SYMBOLS IS AVAILABLE ON REQUEST

ROAD CLASSIFICATION

Primary highway, all weather, hard surface	Light-duty road, all weather, improved surface
Secondary highway, all weather, hard surface	Unimproved road, fair or dry weather

State Route

USGS
Historical File
Topographic Division

U.S.G.S. TILTONVILLE, OHIO - W. VA.
NW/4 WHEELING 15' QUADRANGLE
N4007.5 - W8037.5/7.5
1968
AMS 4864 II NW - SERIES V854

FILE COPY
TOPOGRAPHIC DIVISION

3525

OCT 1 1970