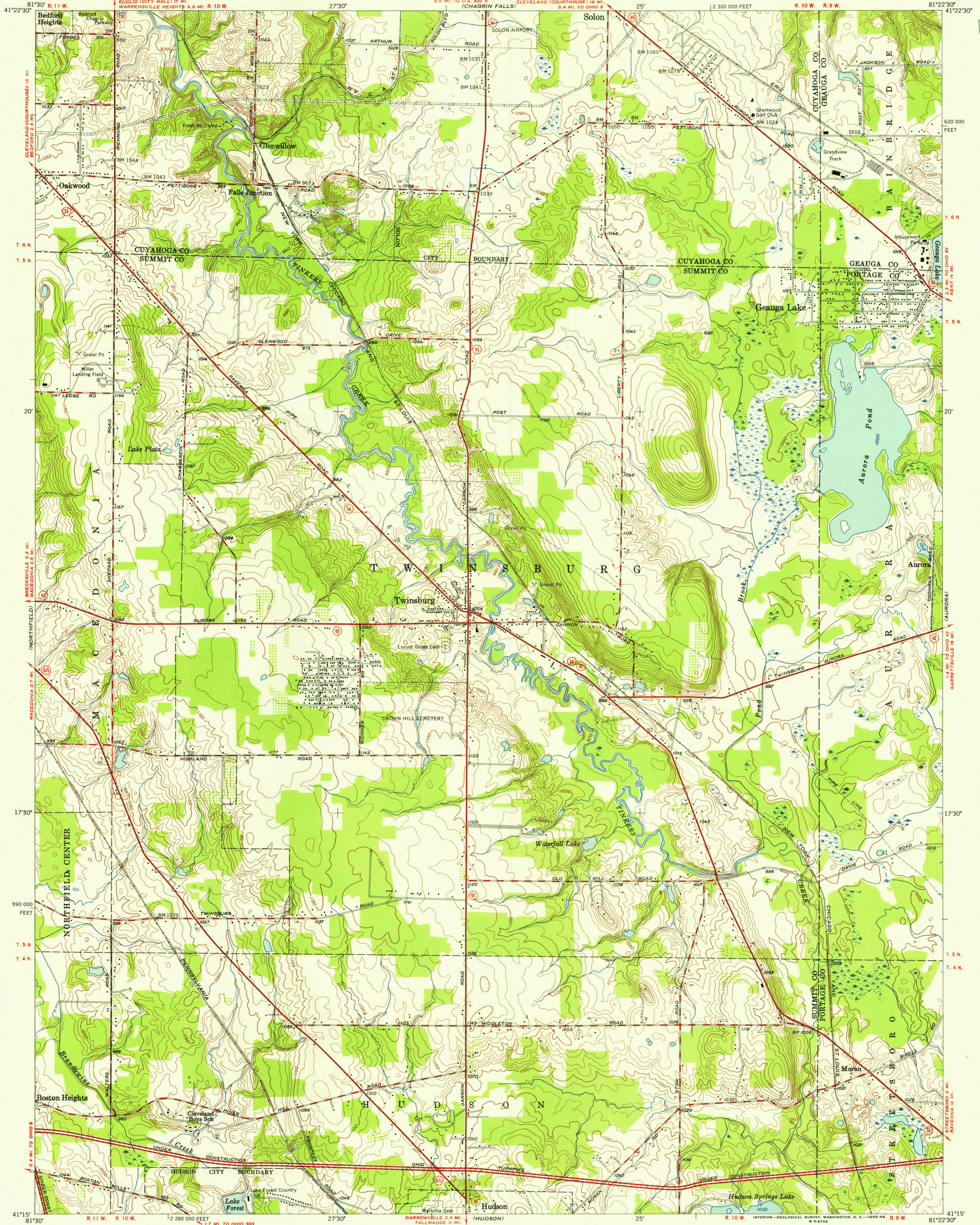


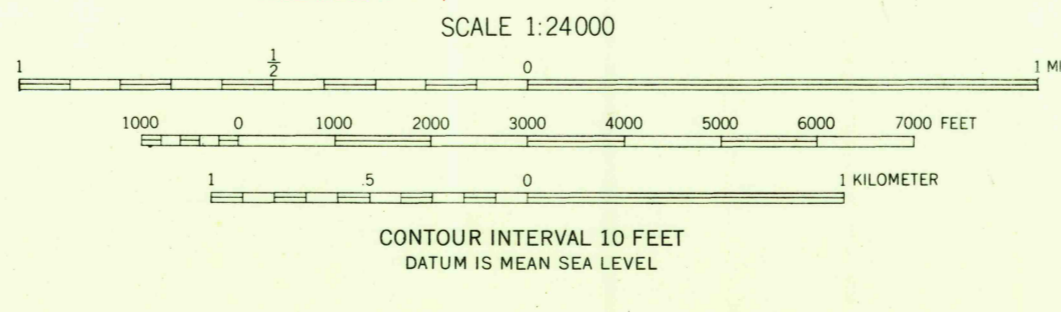
UNITED STATES
DEPARTMENT OF THE INTERIOR
GEOLOGICAL SURVEY

TWINSBURG QUADRANGLE
OHIO
7.5 MINUTE SERIES (TOPOGRAPHIC)
SW/4 CHAGRIN FALLS 15' QUADRANGLE

U.S.G.S.
FILE COPY
TOPOGRAPHIC DIVISION



Mapped, edited, and published by the Geological Survey
Control by USC&GS, and Cleveland Regional Geodetic Survey
Topography from aerial photographs by Kesh plotter
Aerial photographs taken 1952. Field check 1953
Polyconic projection. 1927 North American datum,
10,000-foot grid based on Ohio coordinate system,
north zone
Entire area lies within the Connecticut Western Reserve
Land lines were established by the Connecticut Land Company



USGS
Historical File
Topographic Division

ROAD CLASSIFICATION
Heavy-duty 4 LANE 16 LANE Light duty
Medium-duty 4 LANE 16 LANE Unimproved dirt
U. S. Route Slate Route



TWINSBURG, OHIO
SW/4 CHAGRIN FALLS 15' QUADRANGLE
N4115-W8122.5/7.5
1953

U.S.G.S.
FILE COPY
TOPOGRAPHIC DIVISION

THIS MAP COMPLIES WITH NATIONAL MAP ACCURACY STANDARDS
FOR SALE BY U. S. GEOLOGICAL SURVEY, WASHINGTON, 25, D. C.
A FOLDER DESCRIBING TOPOGRAPHIC MAPS AND SYMBOLS IS AVAILABLE ON REQUEST

MAY 11, 1955
3000