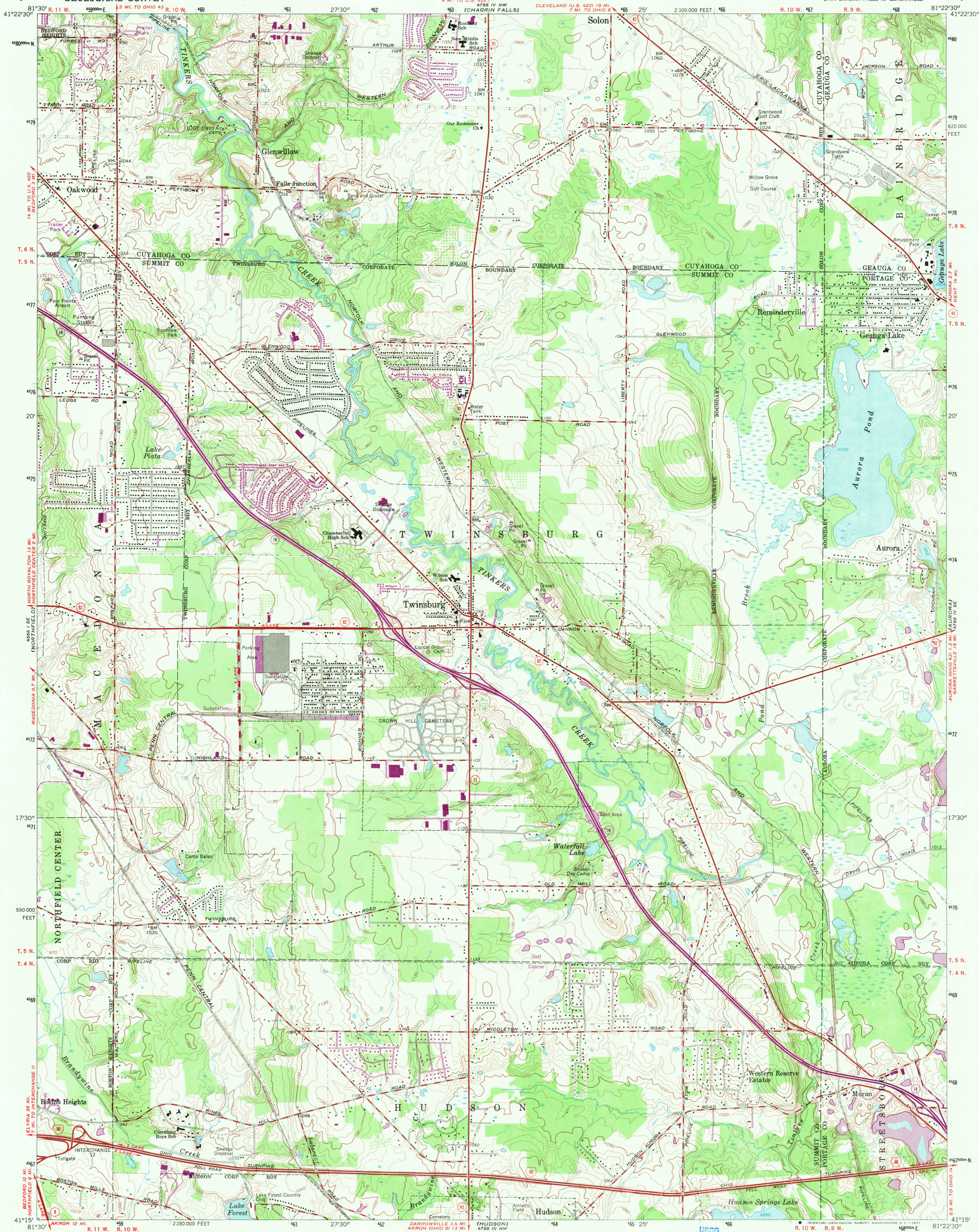
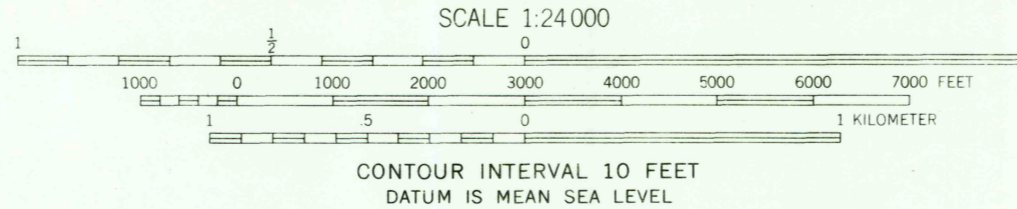
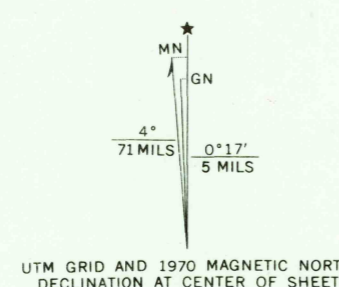


UNITED STATES
DEPARTMENT OF THE INTERIOR
GEOLOGICAL SURVEY

TWINSBURG QUADRANGLE
OHIO
7.5 MINUTE SERIES (TOPOGRAPHIC)
SW 1/4 CHAGRIN FALLS 15' QUADRANGLE



Mapped, edited, and published by the Geological Survey
Revised in cooperation with State of Ohio agencies
Control by USGS, USC&GS, and Cleveland Regional Geodetic Survey
Topography by photogrammetric methods from aerial photographs
taken 1952. Field checked 1953. Revised from aerial
photographs taken 1962. Field checked 1963
Polyconic projection. 1927 North American datum
10,000-foot grid based on Ohio coordinate system, north zone
1000-meter Universal Transverse Mercator grid ticks,
zone 17, shown in blue
Fine red dashed lines indicate selected fence and field lines where
generally visible on aerial photographs. This information is uncheckd
Entire area lies within the Connecticut Western Reserve
Dotted land line established by private subdivision of the
Connecticut Western Reserve



USGS
Historical File
Topographic Division

ROAD CLASSIFICATION

Heavy-duty	Light-duty
Medium-duty	Unimproved dirt
Interstate Route	State Route



THIS MAP COMPLIES WITH NATIONAL MAP ACCURACY STANDARDS
FOR SALE BY U.S. GEOLOGICAL SURVEY, WASHINGTON, D. C. 20242
A FOLDER DESCRIBING TOPOGRAPHIC MAPS AND SYMBOLS IS AVAILABLE ON REQUEST

Revisions shown in purple compiled in cooperation with
State of Ohio agencies from aerial photographs taken
1970. This information not field checked

TWINSBURG, OHIO
SW 1/4 CHAGRIN FALLS 15' QUADRANGLE
N4115—W8122.5/7.5
1963
PHOTOREVISED 1970
AMS 4766 IV SW—SERIES V852

APR 13 1971
U.S.G.S.
FILE COPY
TOPOGRAPHIC DIVISION