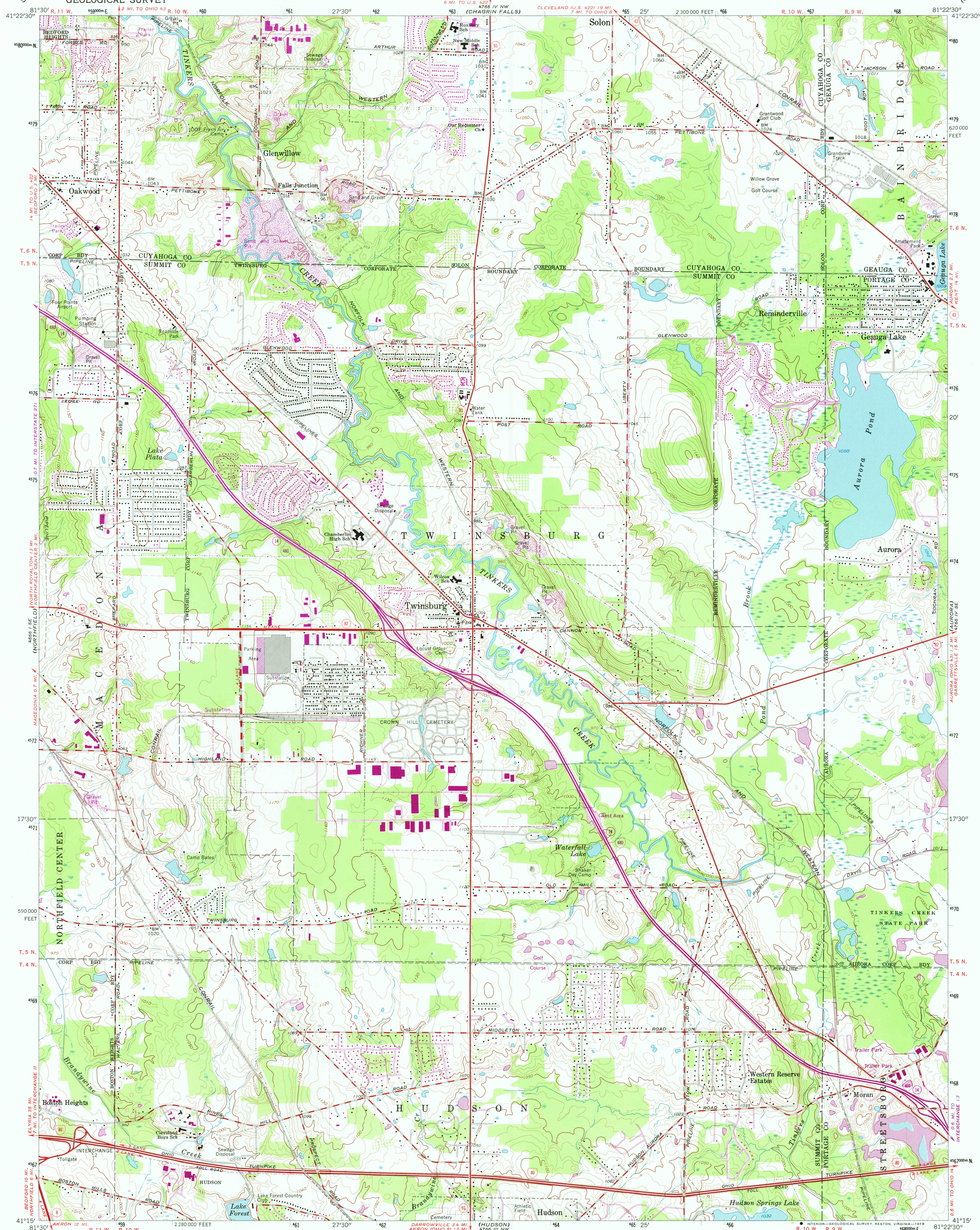
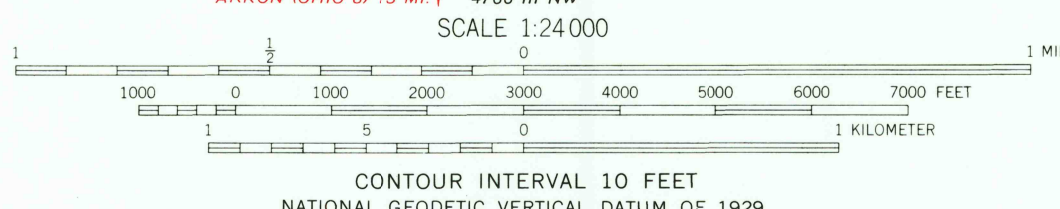
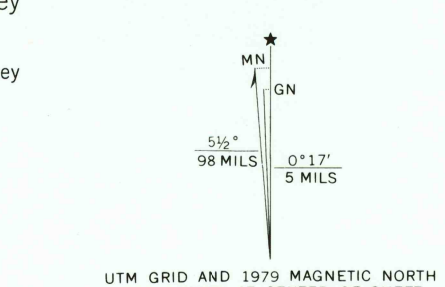


UNITED STATES  
DEPARTMENT OF THE INTERIOR  
GEOLOGICAL SURVEY

TWINSBURG QUADRANGLE  
OHIO  
7.5 MINUTE SERIES (TOPOGRAPHIC)



Mapped, edited, and published by the Geological Survey  
Revised in cooperation with State of Ohio agencies  
Control by USGS, USC&GS, and Cleveland Regional Geodetic Survey  
Topography by photogrammetric methods from aerial photographs  
taken 1952. Field checked 1953. Revised from aerial  
photographs taken 1962. Field checked 1963  
Polyconic projection. 1927 North American datum  
10,000-foot grid based on Ohio coordinate system, north zone  
1000-meter Universal Transverse Mercator grid ticks,  
zone 17, shown in blue  
Fine red dashed lines indicate selected fence and field lines where  
generally visible on aerial photographs. This information is unchecked  
Entire area lies within the Connecticut Western Reserve  
Dotted land line established by private subdivision of the  
Connecticut Western Reserve



ROAD CLASSIFICATION

|                  |                 |
|------------------|-----------------|
| Heavy-duty       | Light-duty      |
| Medium-duty      | Unimproved dirt |
| Interstate Route | State Route     |

TWINSBURG, OHIO  
N4115—W8122.5/7.5  
1963  
PHOTOREVISED 1979  
AMS 4766 IV SW—SERIES V852

THIS MAP COMPLIES WITH NATIONAL MAP ACCURACY STANDARDS  
FOR SALE BY U. S. GEOLOGICAL SURVEY, RESTON, VIRGINIA 22092  
A FOLDER DESCRIBING TOPOGRAPHIC MAPS AND SYMBOLS IS AVAILABLE ON REQUEST

Revisions shown in purple compiled in cooperation with  
State of Ohio agencies from aerial photographs taken  
1977. This information not field checked. Map edited 1979  
Boundary lines shown in purple compiled from latest  
information available from the controlling authority

RETURN TO:  
USGS AND HISTORICAL MAP ARCHIVES

JUL 22 1987

2700