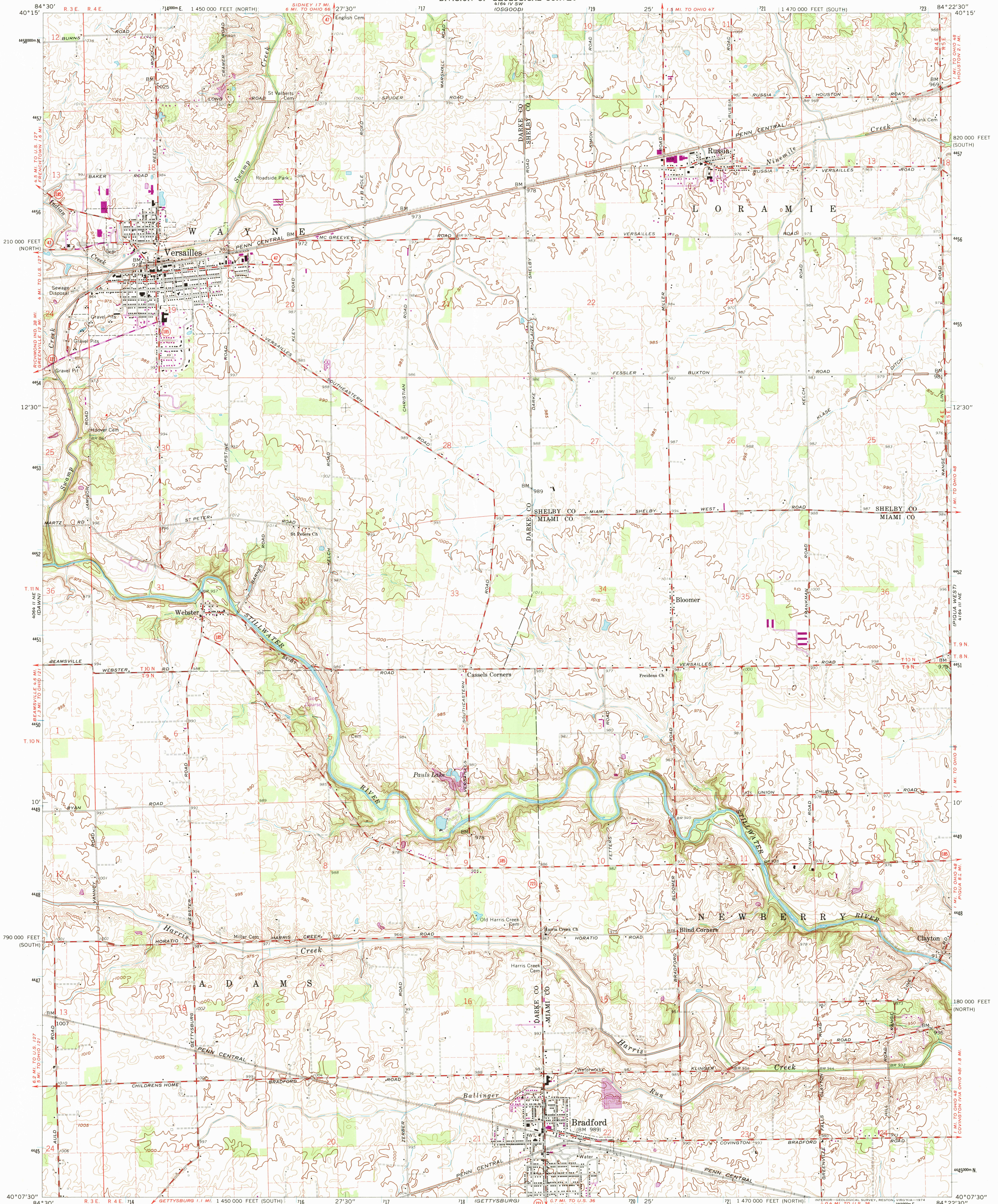


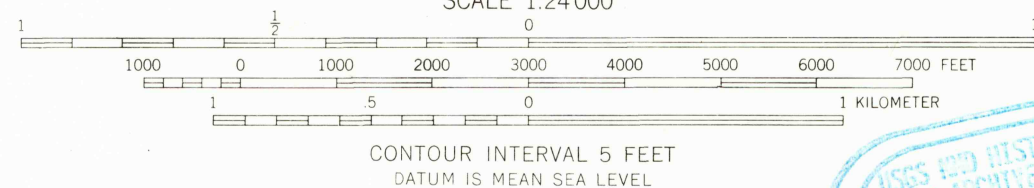
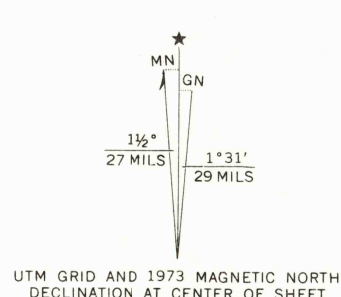
UNITED STATES  
DEPARTMENT OF THE INTERIOR  
GEOLOGICAL SURVEY

STATE OF OHIO  
DEPARTMENT OF TRANSPORTATION  
DEPARTMENT OF NATURAL RESOURCES  
DIVISION OF GEOLOGICAL SURVEY  
(OSGOOD)

VERSAILLES QUADRANGLE  
OHIO  
7.5 MINUTE SERIES (TOPOGRAPHIC)



Mapped, edited, and published by the Geological Survey  
Control by USGS and USC&GS  
Topography by photogrammetric methods from aerial  
photographs taken 1960. Field checked 1961.  
Polyconic projection. 1927 North American datum  
10,000-foot grid based on Ohio coordinate system,  
north and south zones  
1000-meter Universal Transverse Mercator grid ticks,  
zone 16, shown in blue  
Entire area lies within the Miami River Survey  
Land lines based on the Great Miami River Base  
Fine red dashed lines indicate selected fence and field lines where  
generally visible on aerial photographs. This information is unchecked



THIS MAP COMPLIES WITH NATIONAL MAP ACCURACY STANDARDS  
FOR SALE BY U. S. GEOLOGICAL SURVEY, RESTON, VIRGINIA 22092  
A FOLDER DESCRIBING TOPOGRAPHIC MAPS AND SYMBOLS IS AVAILABLE ON REQUEST



ROAD CLASSIFICATION  
Medium-duty ——— Light-duty ———  
Unimproved dirt ———  
State Route ———

VERSAILLES, OHIO

N4007.5—W8422.5/7.5

1961  
PHOTOREVISED 1973  
AMS 4164 III NW—SERIES V852

Revisions shown in purple compiled in cooperation with  
State of Ohio agencies from aerial photographs taken  
1973. This information not field checked