

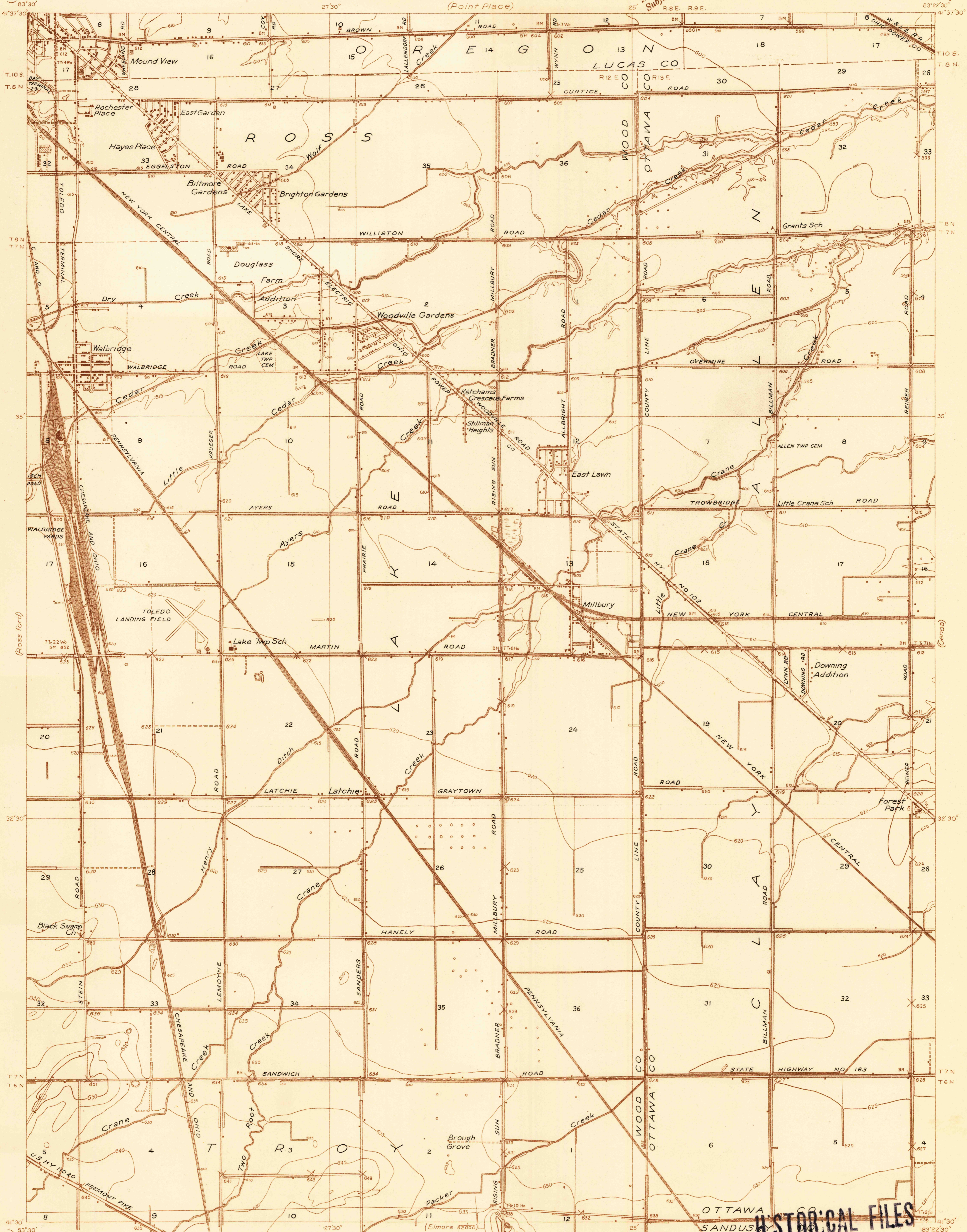
(Toledo)

DEPARTMENT OF THE INTERIOR
U. S. GEOLOGICAL SURVEY

OHIO
WALBRIDGE QUADRANGLE

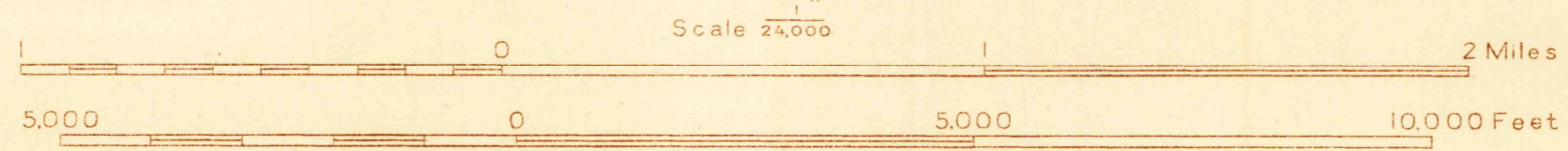
Advance sheet.
Subject to correction.

(Reno Beach)



(Bowling Green)
22500

Albert Pike, Division Engineer
Topography by G.F. Westinghouse and R.L. Marx
Control by U. S. Geological Survey,
U. S. Coast and Geodetic Survey and
Lucas County
Surveyed in 1935



Contour interval 5 feet
Datum is mean sea level

HISTORICAL FILES
POLYCONIC PROJECTION - 1927 North American Datum
DO NOT REMOVE
FILE COPY

RETURN TO CENTRAL FILE
WALBRIDGE, OHIO

APPROXIMATE MEAN DECLINATION, 1935

(Empire)
22500