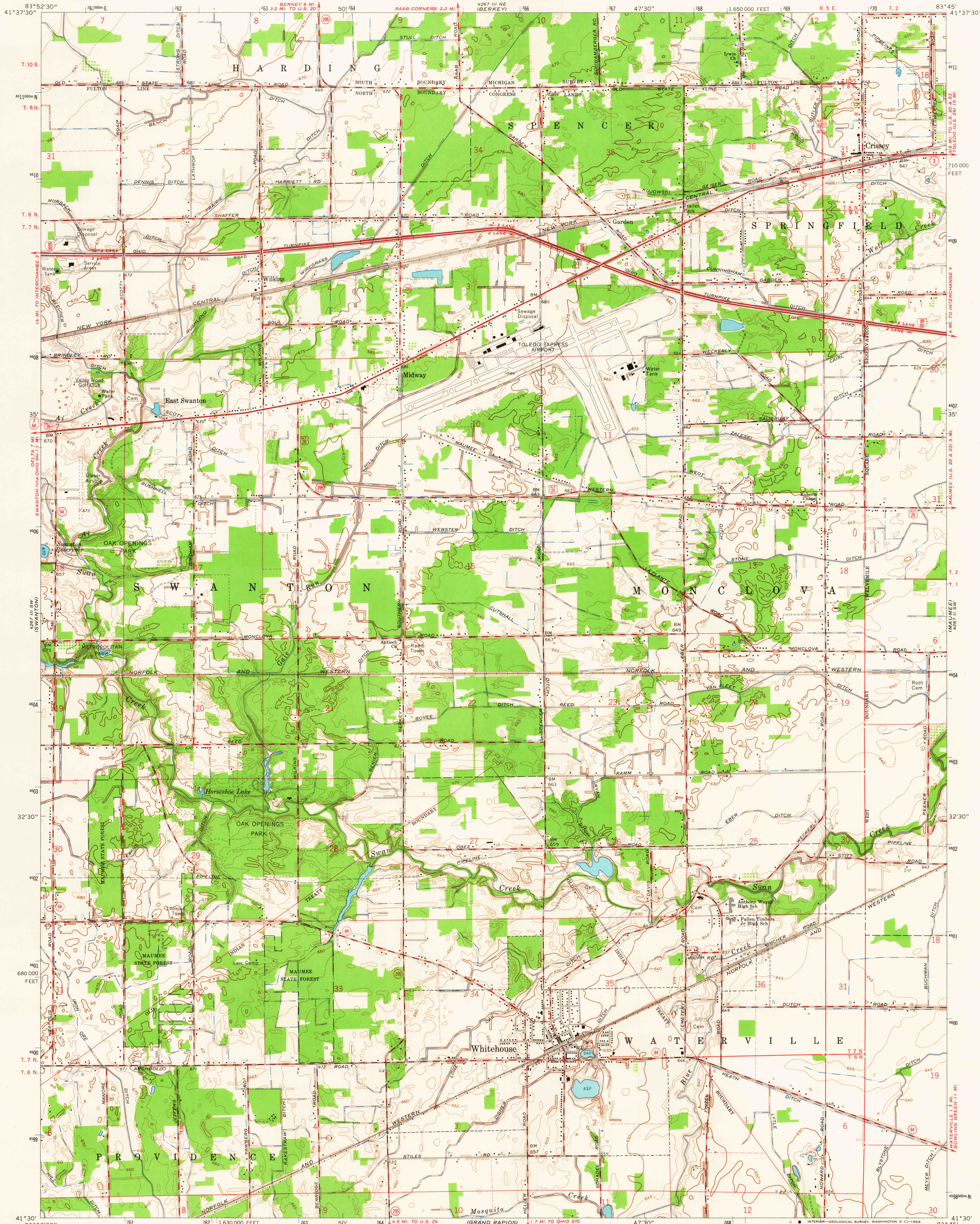


UNITED STATES  
DEPARTMENT OF THE INTERIOR  
GEOLOGICAL SURVEY

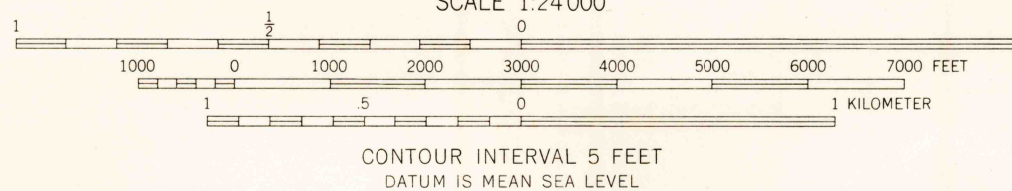
STATE OF OHIO  
DEPARTMENT OF HIGHWAYS  
DEPARTMENT OF NATURAL RESOURCES  
DIVISION OF GEOLOGICAL SURVEY

WHITEHOUSE QUADRANGLE  
OHIO—LUCAS CO.  
7.5 MINUTE SERIES (TOPOGRAPHIC)  
SE/4 SWANTON 15' QUADRANGLE



Mapped, edited, and published by the Geological Survey  
Control by USGS and USC&GS  
Topography by planetable surveys 1925. Revised 1964  
Polyconic projection. 1927 North American datum  
10,000-foot grid based on Ohio coordinate system, north zone  
1000-meter Universal Transverse Mercator grid ticks,  
zone 17, shown in blue  
Land lines south of Fulton Line based on the First Principal Meridian  
Land lines north of Fulton Line based on the Michigan Meridian  
Fine red dashed lines indicate selected fence and field lines where  
generally visible on aerial photographs. This information is unchecked

UTM GRID AND 1964 MAGNETIC NORTH  
DECLINATION AT CENTER OF SHEET



USGS  
Historical File  
Topographic Division



ROAD CLASSIFICATION  
Heavy-duty ——— Light-duty ———  
Medium-duty ——— Unimproved dirt ———  
Interstate Route — U.S. Route — State Route

U.S.G.S.

FILE COPY  
TOPOGRAPHIC DIVISION

WHITEHOUSE, OHIO  
SE/4 SWANTON 15' QUADRANGLE  
N4130—W8345/7.5

1964

AMS 4267 III SE—SERIES V852

FOR SALE BY U.S. GEOLOGICAL SURVEY, WASHINGTON, D. C. 20242  
A FOLDER DESCRIBING TOPOGRAPHIC MAPS AND SYMBOLS IS AVAILABLE ON REQUEST

2715  
MAY 12 1966