

UNITED STATES
DEPARTMENT OF THE INTERIOR
GEOLOGICAL SURVEY

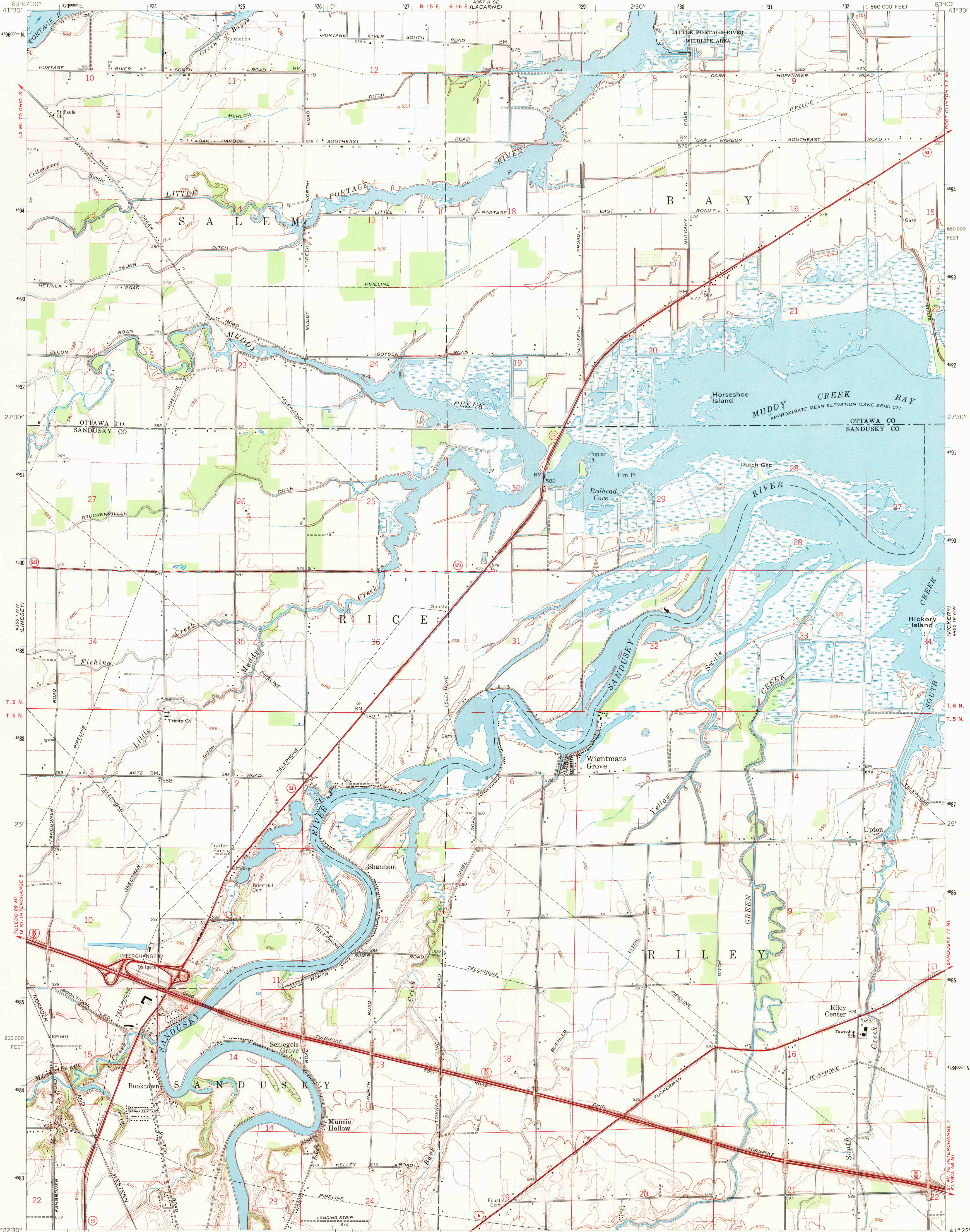
WIGHTMANS GROVE QUADRANGLE
OHIO
7.5 MINUTE SERIES (TOPOGRAPHIC)

NE 1/4 FREMONT 15' QUADRANGLE

1:860,000 FEET

NE 1/4 FREMONT 15' QUADRANGLE

1:860,000 FEET

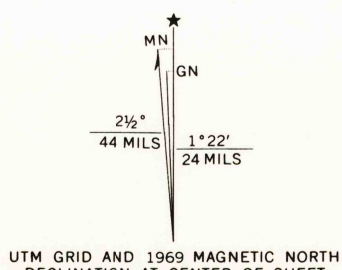


Mapped, edited, and published by the Geological Survey
Revised in cooperation with State of Ohio agencies
Control by USGS and USC&GS

Topography by photogrammetric methods from aerial photographs
taken 1956 and planimetric surveys 1957. Revised from aerial
photographs taken 1969. Field checked 1969.

Polyconic projection. 1927 North American datum
10,000-foot grid based on Ohio coordinate system, north zone
1000-meter Universal Transverse Mercator grid ticks, zone 17,
shown in blue

Fine red dashed lines indicate selected fence and field lines where
generally visible on aerial photographs. This information is unchecked
Entire area lies within Congress Lands
Land lines based on the First Principal Meridian



1:830,000 FEET

1:830,000 FEET

1:830,000 FEET

1:830,000 FEET

1:830,000 FEET

1:830,000 FEET

1:830,000 FEET

1:830,000 FEET

1:830,000 FEET

USGS
Historical File
Topographic Division



ROAD CLASSIFICATION
Primary highway, all weather, hard surface
Secondary highway, all weather, hard surface
Light-duty road, all weather, improved surface
Unimproved road, fair or dry weather
Interstate Route
U. S. Route
State Route

WIGHTMANS GROVE, OHIO
NE 1/4 FREMONT 15' QUADRANGLE
N4122.5-W8300/7.5

1969

AMS 4366 1 NE-SERIES V852

U.S.G.S.
COPY
TOPOGRAPHIC DIVISION
JUL 1 1971

2475