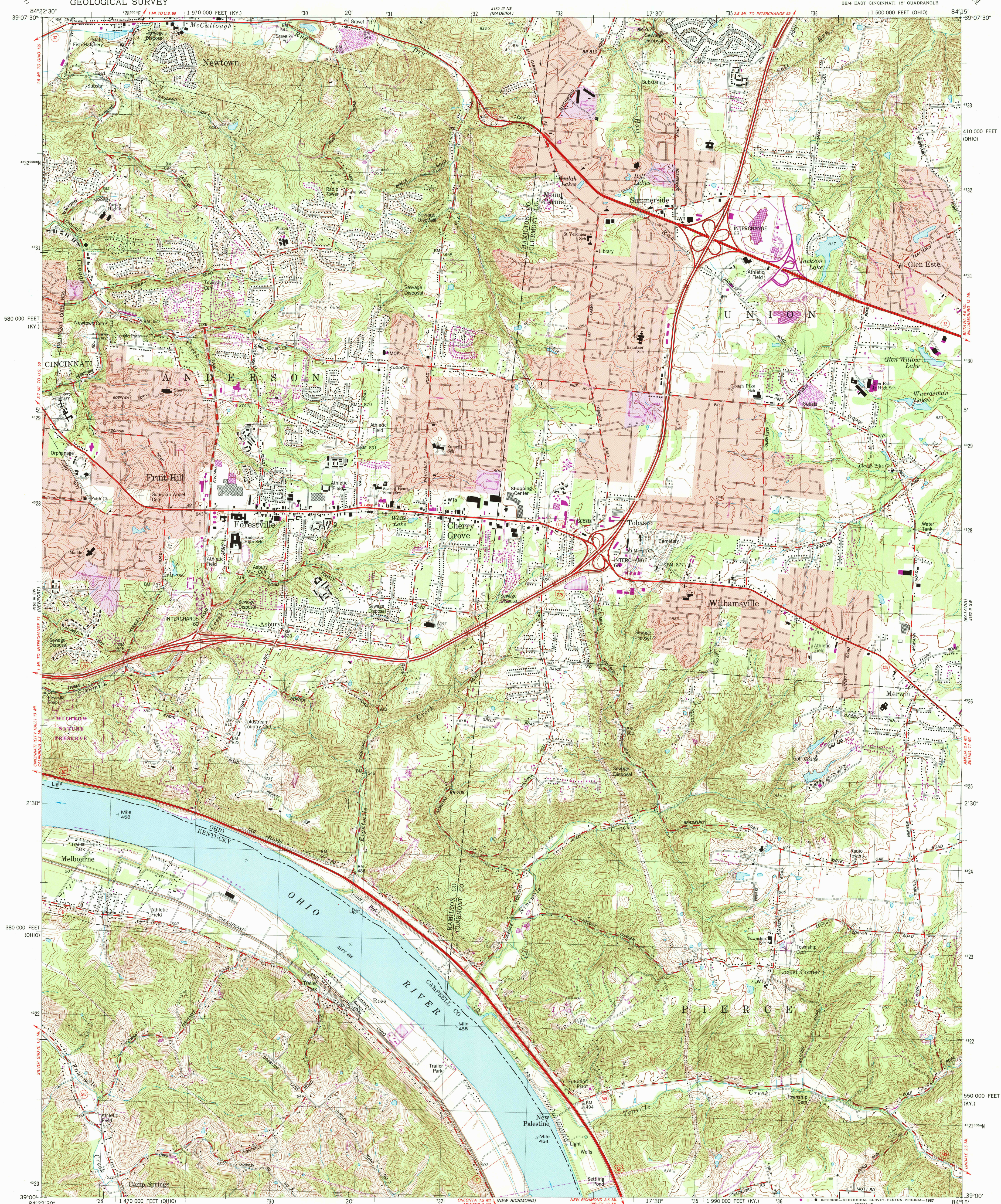


UNITED STATES
DEPARTMENT OF THE INTERIOR
GEOLOGICAL SURVEY

WITHAMSVILLE QUADRANGLE
OHIO-KENTUCKY
7.5 MINUTE SERIES (TOPOGRAPHIC)



Mapped, edited, and published by the Geological Survey
Kentucky area mapped in cooperation with the
Kentucky Geological Survey
Control by USGS, NOS/NOAA, USCE, and the City of Cincinnati
Topography by photogrammetric methods from aerial photographs
taken 1949. Field checked 1953. Revised from aerial photographs
taken 1977. Field checked 1977. Map edited 1983
Polyconic projection. 10,000-foot grid ticks based on Ohio
coordinate system, south zone and Kentucky coordinate system,
north zone. 1000-meter Universal Transverse Mercator grid,
zone 16. 1927 North American Datum.
To place on the predicted North American Datum 1983
move the projection lines 3 meters south and
6 meters west as shown by dashed corner ticks.
Fine red dashed lines indicate selected fence and field lines where
generally visible on aerial photographs. This information is unchecked
Red tint indicates areas in which only landmark buildings are shown
Ohio area lies within the Virginia Military District

There may be private inholdings within the boundaries
of the National or State reservations shown on this map
Ohio area lies within the Virginia Military District

THIS MAP COMPLIES WITH NATIONAL MAP ACCURACY STANDARDS
FOR SALE BY U.S. GEOLOGICAL SURVEY, DENVER, COLORADO 80225 OR RESTON, VIRGINIA 22092,
KENTUCKY GEOLOGICAL SURVEY, LEXINGTON, KENTUCKY 40506,
AND KENTUCKY DEPARTMENT OF COMMERCE, FRANKFORT, KENTUCKY 40601
A FOLDER DESCRIBING TOPOGRAPHIC MAPS AND SYMBOLS IS AVAILABLE ON REQUEST

Revisions shown in purple and woodland compiled in cooperation
with State of Kentucky agencies from aerial photographs taken 1984
and other sources. Contours adjusted adjacent to certain photorevised
hydrographic features. This information not field checked. Map edited 1987

ROAD CLASSIFICATION
Primary highway, hard surface
Secondary highway, hard surface
Unimproved road, hard surface
Light-duty road, hard or improved surface
Unimproved road, hard surface
Interstate Route
U. S. Route
State Route

WITHAMSVILLE, OHIO-KY.
SE/4 EAST CINCINNATI 15' QUADRANGLE
39084-A3-TF-024

1983
PHOTOREVISED 1987
DMA 4162 III SE-SERIES V852

PCFD FILE COPY

OCT 14 1988

ISSN: NMN: LITHOGRAPH MAP