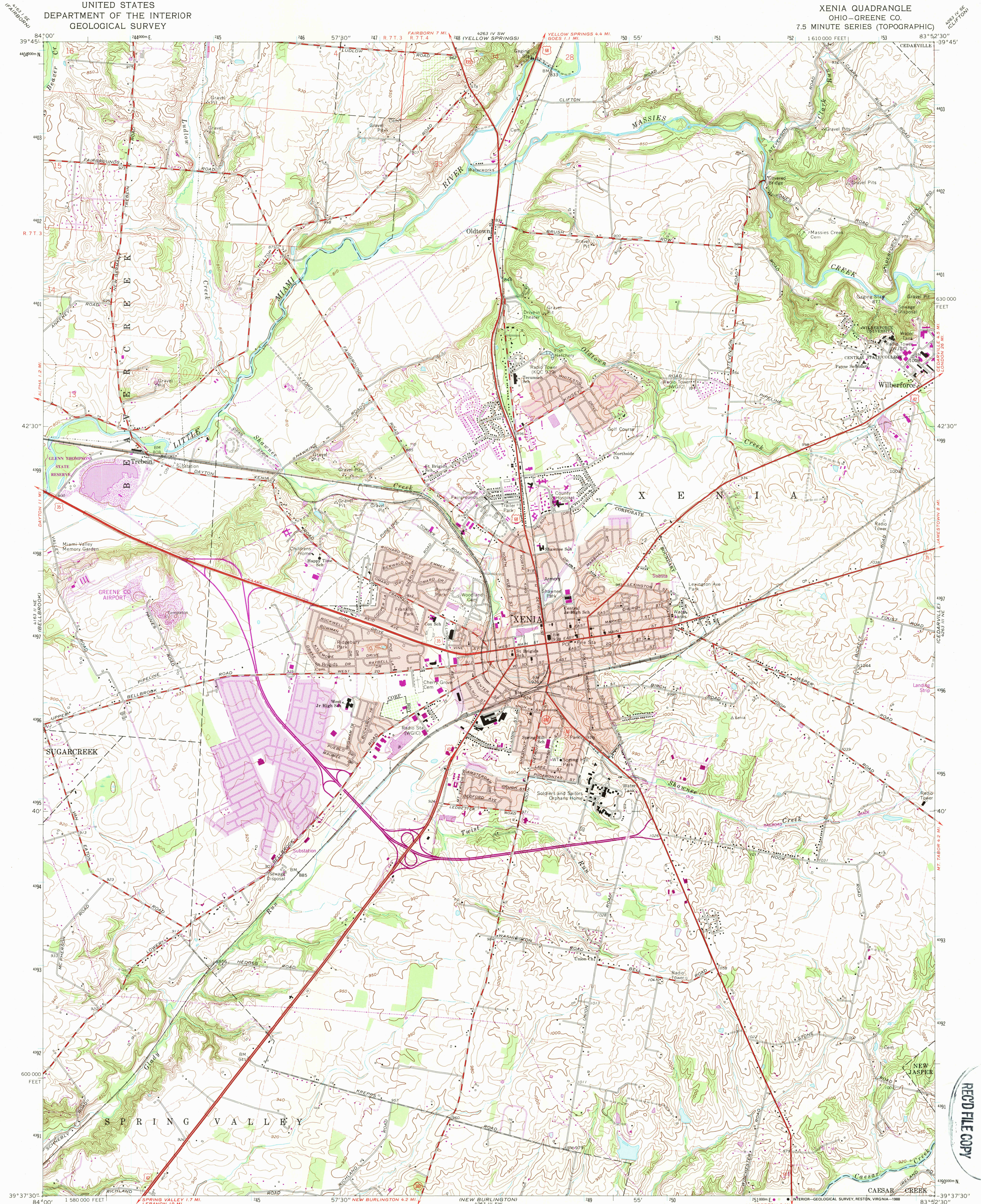
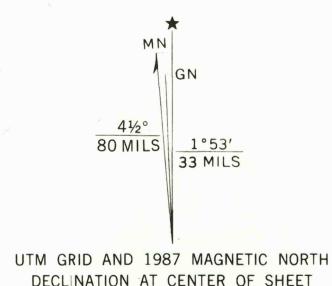


UNITED STATES
DEPARTMENT OF THE INTERIOR
GEOLOGICAL SURVEY

XENIA QUADRANGLE
OHIO—GREENE CO.
7.5 MINUTE SERIES (TOPOGRAPHIC)



Mapped, edited, and published by the Geological Survey
in cooperation with the U. S. Corps of Engineers
Revised in cooperation with State of Ohio agencies
Control by USGS and USC&GS
Topography by photogrammetric methods from aerial photographs
taken 1954. Field checked 1955. Revised 1965
Polyconic projection. 10,000-foot grid ticks based on
Ohio coordinate system, south zone
1000-meter Universal Transverse Mercator grid ticks
zone 17, shown in blue
1927 North American Datum
To place on the predicted North American Datum 1983
move the projection lines 3 meters south and
7 meters west as shown by dashed corner ticks
Area west of the Little Miami River lies within the Between the Miamis
Land lines based on the Great Miami River Base
Area east of the Little Miami River lies within the Virginia Military District
Red tint indicates areas in which only landmark buildings are shown



THIS MAP COMPLIES WITH NATIONAL MAP ACCURACY STANDARDS
FOR SALE BY U. S. GEOLOGICAL SURVEY
DENVER, COLORADO 80225 OR RESTON, VIRGINIA 22092
A FOLDER DESCRIBING TOPOGRAPHIC MAPS AND SYMBOLS IS AVAILABLE ON REQUEST



ROAD CLASSIFICATION
Heavy-duty ——— Light-duty ———
Medium-duty ——— Unimproved dirt ———
U. S. Route ——— State Route ———

XENIA, OHIO
39083-F8-TF-024

1965
PHOTOREVISED 1987
DMA 4263 III NW—SERIES V852

Revisions shown in purple and woodland compiled in cooperation
with State of Ohio agencies from aerial photographs taken 1984
and other sources. This information not field checked
Map edited 1987
Purple tint indicates extension of urban areas

USGS NMN HISTORICAL MAP
DEC 1 1988
REC'D FILE COPY