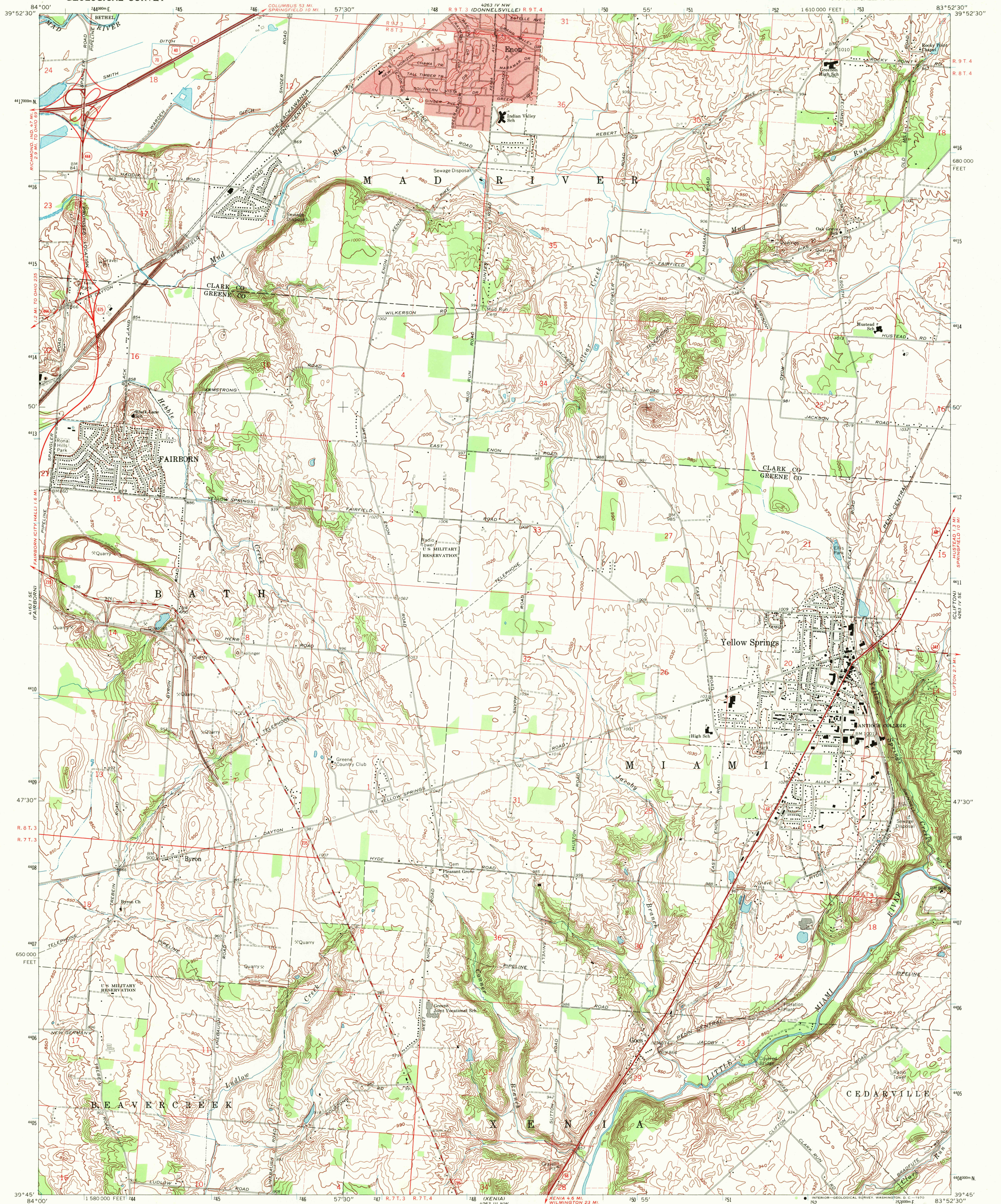
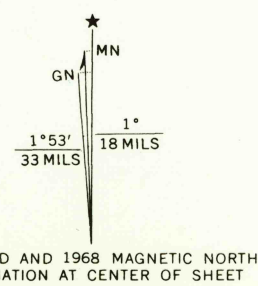


UNITED STATES  
DEPARTMENT OF THE INTERIOR  
GEOLOGICAL SURVEY

YELLOW SPRINGS QUADRANGLE  
OHIO  
7.5 MINUTE SERIES (TOPOGRAPHIC)  
SW/4 SPRINGFIELD 15' QUADRANGLE



Maped, edited, and published by the Geological Survey  
in cooperation with the Army Map Service  
Revised in cooperation with State of Ohio agencies  
Control by USGS and USC&GS  
Topography by photogrammetric methods from aerial photographs  
taken 1954. Field checked 1955. Revised from aerial  
photographs taken 1968. Field checked 1968  
Polyconic projection. 1927 North American datum  
10,000-foot grid based on Ohio coordinate system, south zone  
1000-meter Universal Transverse Mercator grid ticks, zone 17, shown in blue  
Fine red dashed lines indicate selected fence and field lines whose  
generally visible on aerial photographs. This information is unchecked  
Red tint indicates area in which only landmark buildings are shown  
Areas covered by light-blue dashed pattern are subject to controlled inundation  
to 835 feet by Huffman Dam  
Area east of the Little Miami River lies within the Virginia Military  
District. Area west of the Little Miami River lies within the  
Between the Miamis. Land lines based on the Great Miami River Base



SCALE 1:24,000  
CONTOUR INTERVAL 10 FEET  
DATUM IS MEAN SEA LEVEL

THIS MAP COMPLIES WITH NATIONAL MAP ACCURACY STANDARDS  
FOR SALE BY U. S. GEOLOGICAL SURVEY, WASHINGTON, D. C. 20242  
A FOLDER DESCRIBING TOPOGRAPHIC MAPS AND SYMBOLS IS AVAILABLE ON REQUEST

USGS  
Historical File  
Topographic Division

U.S.G.S.  
FILE COPY  
TOPOGRAPHIC DIVISION

ROAD CLASSIFICATION  
Primary highway, all weather, hard surface  
Secondary highway, all weather, hard surface  
Light-duty road, all weather, improved surface  
Unimproved road, fair or dry weather  
Interstate Route  
U. S. Route  
State Route

YELLOW SPRINGS, OHIO  
SW/4 SPRINGFIELD 15' QUADRANGLE  
N 3945—W 8352.5/7.5

1968  
AMS 4263 IV SW—SERIES V852

3380  
DEC 11 1970