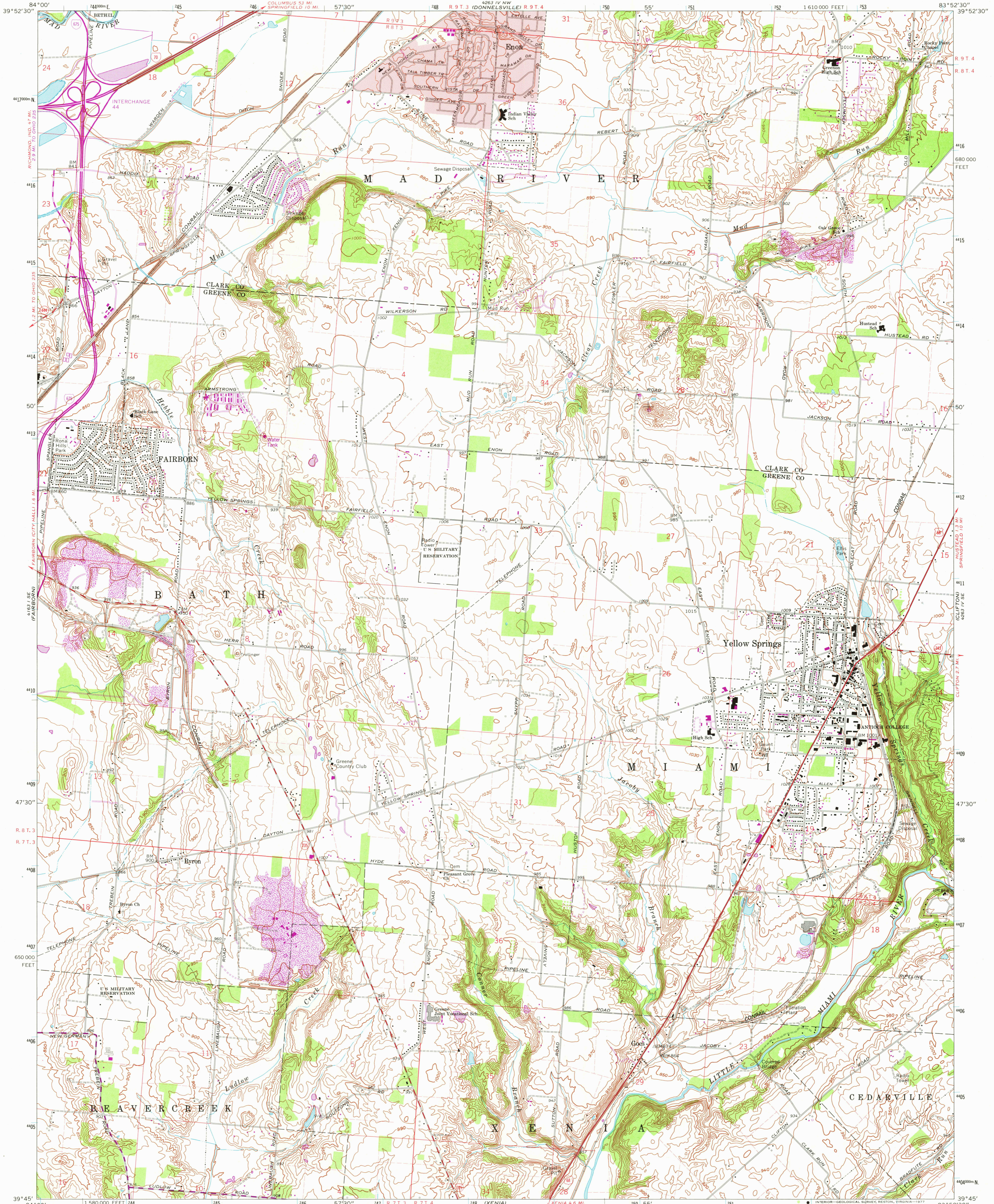
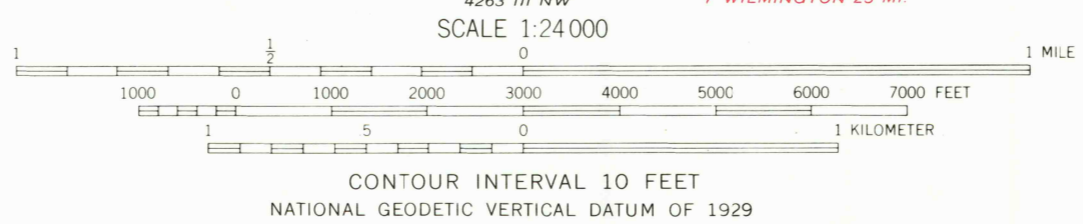


UNITED STATES
DEPARTMENT OF THE INTERIOR
GEOLOGICAL SURVEY

YELLOW SPRINGS QUADRANGLE
OHIO
7.5 MINUTE SERIES (TOPOGRAPHIC)



Mapped, edited, and published by the Geological Survey in cooperation with the Army Map Service. Revised in cooperation with State of Ohio agencies. Control by USGS and USC&GS. Topography by photogrammetric methods from aerial photographs taken 1954. Field checked 1955. Revised from aerial photographs taken 1968. Field checked 1968. Polyconic projection. 1927 North American datum. 10,000-foot grid based on Ohio coordinate system, south zone. 1000-meter Universal Transverse Mercator grid ticks, zone 17, shown in blue. Fine red dashed lines indicate selected fence and field lines where generally visible on aerial photographs. This information is unchecked. Red tint indicates area in which only landmark buildings are shown. Areas covered by light-blue dashed pattern are subject to controlled inundation to 835 feet by Huffman Dam. Area east of the Little Miami River lies within the Virginia Military District. Area west of the Little Miami River lies within the Between the Miamis. Land lines based on the Great Miami River Base.



ROAD CLASSIFICATION
Primary highway, all weather, hard surface
Secondary highway, all weather, hard surface
Light-duty road, all weather, improved surface
Unimproved road, fair or dry weather
Interstate Route
U. S. Route
State Route

USGS
Historical File
Topographic Division

YELLOW SPRINGS, OHIO

N3945-W8352.5/7.5

JUL 11 1978

3900

THIS MAP COMPLIES WITH NATIONAL MAP ACCURACY STANDARDS
FOR SALE BY U. S. GEOLOGICAL SURVEY, RESTON, VIRGINIA 22092
A FOLDER DESCRIBING TOPOGRAPHIC MAPS AND SYMBOLS IS AVAILABLE ON REQUEST

Revisions shown in purple compiled in cooperation with State of Ohio agencies from aerial photographs taken 1975. This information not field checked.

1968
PHOTOREVISED 1975
AMS 4263 IV SW-SERIES V852