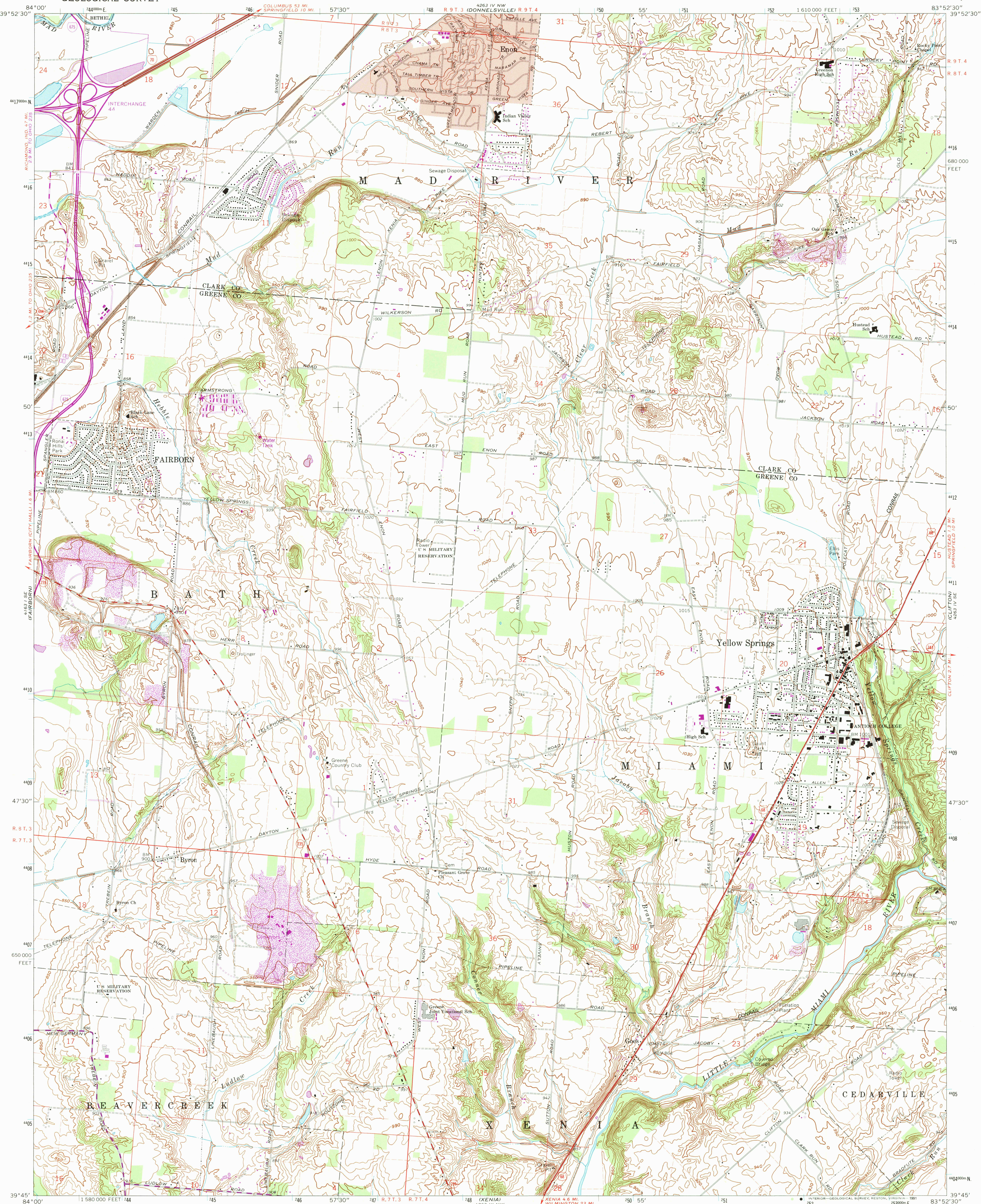
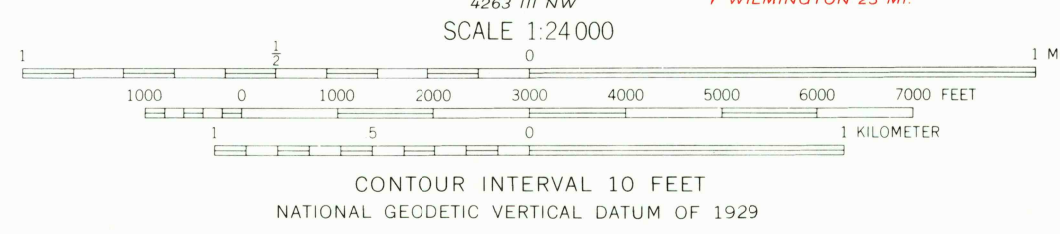
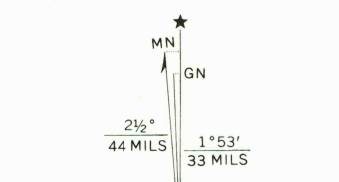


UNITED STATES
DEPARTMENT OF THE INTERIOR
GEOLOGICAL SURVEY

YELLOW SPRINGS QUADRANGLE
OHIO
7.5 MINUTE SERIES (TOPOGRAPHIC)



Maped, edited, and published by the Geological Survey
in cooperation with the Army Map Service
Revised in cooperation with State of Ohio agencies
Control by USGS and USC&GS
Topography by photogrammetric methods from aerial photographs
taken 1954. Field checked 1955. Revised from aerial
photographs taken 1968. Field checked 1968
Polyconic projection. 1927 North American datum
10,000-foot grid based on Ohio coordinate system, south zone
1000-meter Universal Transverse Mercator grid ticks, zone 17, shown in blue
Fine red dashed lines indicate selected fence and field lines where
generally visible on aerial photographs. This information is unchecked
Red tint indicates area in which only landmark buildings are shown
Areas covered by light-blue dashed pattern are subject to controlled inundation
to 835 feet by Huffman Dam
Area east of the Little Miami River lies within the Virginia Military
District. Area west of the Little Miami River lies within the
Between the Miamis. Land lines based on the Great Miami River Base



Revisions shown in purple compiled in cooperation with
State of Ohio agencies from aerial photographs taken
1975. This information not field checked

ROAD CLASSIFICATION
Primary highway, all weather. Light-duty road, all weather.
hard surface. improved surface
Secondary highway, all weather. Unimproved road, fair or dry
hard surface. weather
Interstate Route U.S. Route State Route

YELLOW SPRINGS, OHIO

N3945-W8352 5/7.5
PHOTOINSPECTED 1984
1968
PHOTOREVISED 1975
AMS 4263 IV SW-SERIES V852

THIS MAP COMPLIES WITH NATIONAL MAP ACCURACY STANDARDS
FOR SALE BY U.S. GEOLOGICAL SURVEY
DENVER, COLORADO 80225, OR RESTON, VIRGINIA 22092
A FOLDER DESCRIBING TOPOGRAPHIC MAPS AND SYMBOLS IS AVAILABLE ON REQUEST

USGS NHD HISTORICAL MAP
JUL 2 1991
REC'D FILE COPY