

A.M.S. V501  
AMS 1 1990

Prepared under the direction of the Chief of Engineers, by the Corps of Engineers, U. S. Army Map Service (AM), Washington, D. C. Compiled in 1948 from United States Quadrangles, 1:62,500, U. S. Geological Survey and Corps of Engineers, 1901-1941; County Highway Maps, 1940; and intelligence data to 1948. Planimetric detail partially revised by photogrammetric methods. Aerial photography 1938-1944. Road and aeronautical data verified by state authorities, 1949. Control by U. S. Geological Survey, U. S. Coast and Geodetic Survey and U. S. Engineers.

TOWNSHIP OR RANGE LINE  
LAND GRANT BOUNDARY

**LEGEND**  
ROAD DATA 1949

**POPULATED PLACES**  
Small: Large built-up area  
500,000 or over  
100,000 to 500,000  
25,000 to 100,000  
5,000 to 25,000  
1,000 to 5,000  
1,000 or less

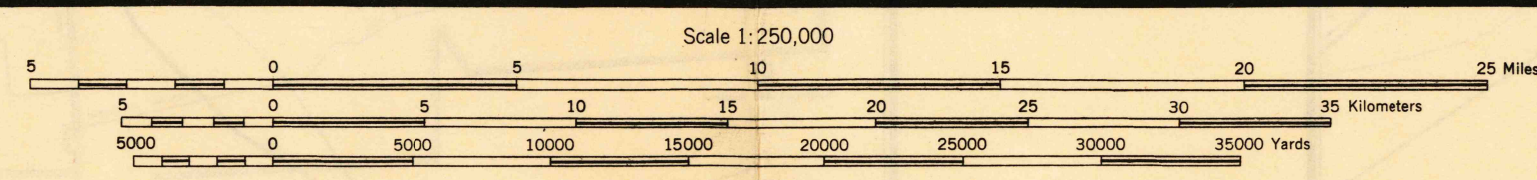
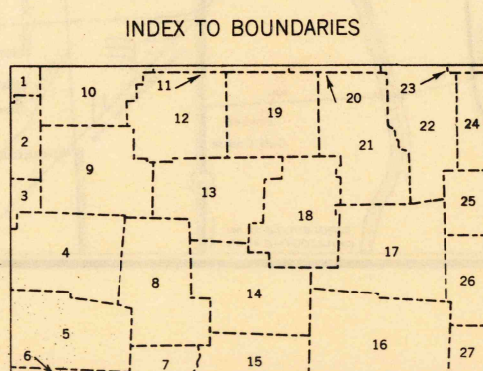
**RAILROADS**  
Standard gauge  
Narrow gauge  
Single track  
Multiple track  
Woodland  
Mine

**BOUNDARIES**  
International  
State  
County  
Park and reservation  
Horizontal control point  
Spot elevation in feet

**Other Features**  
Hard surface, heavy duty road  
Hard surface, heavy duty road  
Hard surface, medium duty road  
Hard surface, medium duty road  
Loose surface, graded and drained road  
Dirt road, trail  
Route markers: Federal, State  
Falls; Rapids  
Military airfield  
Municipal or commercial airfield  
Auxiliary airfield  
Seaplane base  
Seaplane anchorage

**INDEX TO BOUNDARIES**

**Ohio Counties**  
1. Putnam  
2. Allen  
3. Auglaize  
4. Logan  
5. Champaign  
6. Clark  
7. Madison  
8. Union  
9. Hancock  
10. Seneca  
11. Warren  
12. Richland  
13. Marion  
14. Delaware  
15. Licking  
16. Morgan  
17. Meigs  
18. Mingo  
19. Crawford  
20. Fulton  
21. Pickaway  
22. Ashland  
23. Adams  
24. Wayne  
25. Holmes  
26. Coshocton  
27. Muskingum



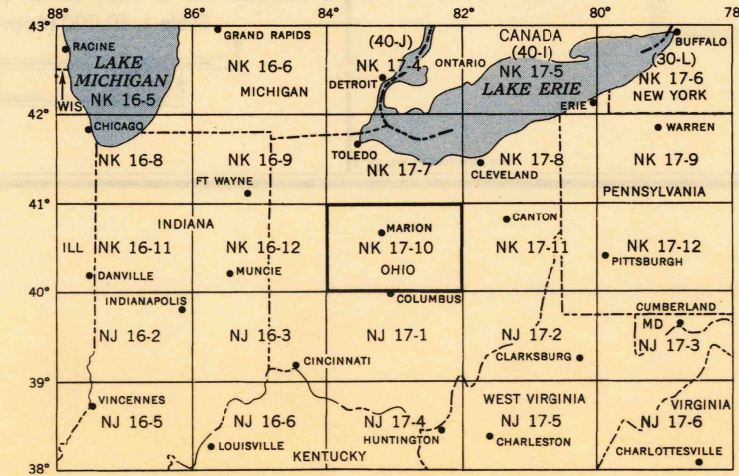
CONTOUR INTERVAL 100 FEET  
DATUM IS MEAN SEA LEVEL  
TRANSVERSE MERCATOR PROJECTION  
1927 NORTH AMERICAN DATUM

FOR SALE BY U. S. GEOLOGICAL SURVEY, WASHINGTON 25, D. C.

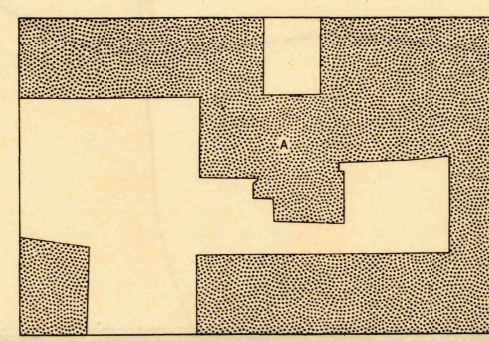
SECTIONIZED TOWNSHIP

6	5	4	3	2	1
7	8	9	10	11	12
13	14	15	16	17	18
19	20	21	22	23	24
25	26	27	28	29	30
31	32	33	34	35	36

LOCATION DIAGRAM FOR NK 17-10



COVERAGE DIAGRAM



MARION, UNITED STATES  
OHIO  
N4000-W8200/100x200

U. S. G. S.  
FILE COPY  
Inspection and Editing

8-24-51  
(2000)