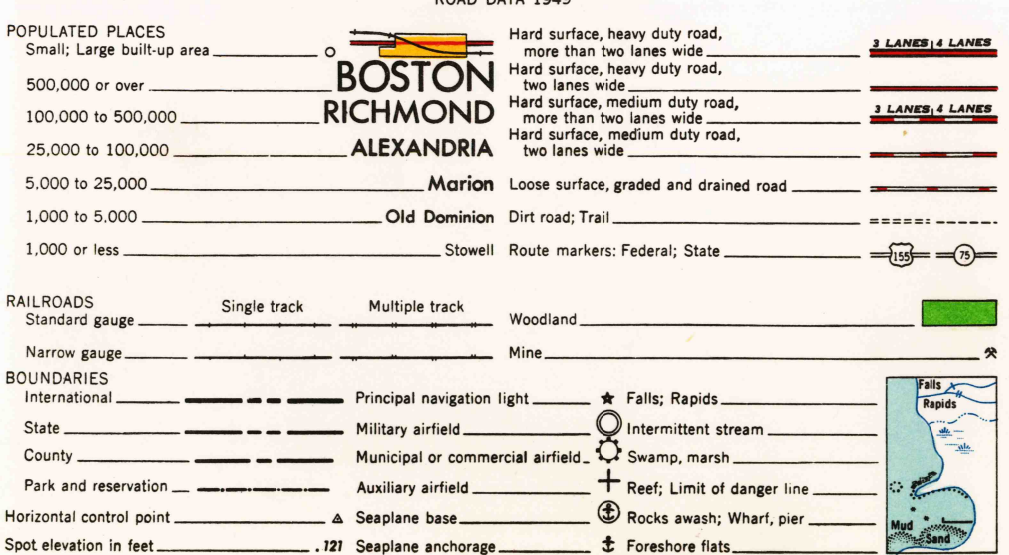
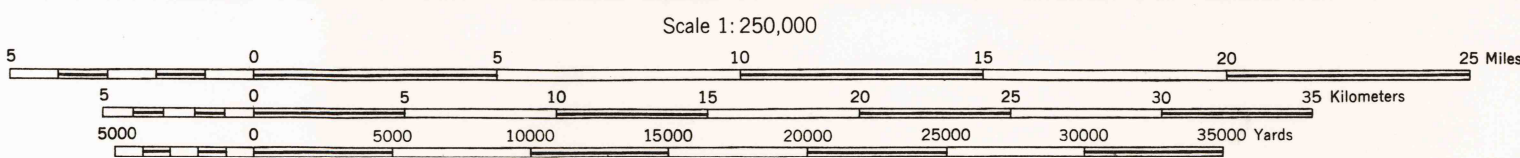
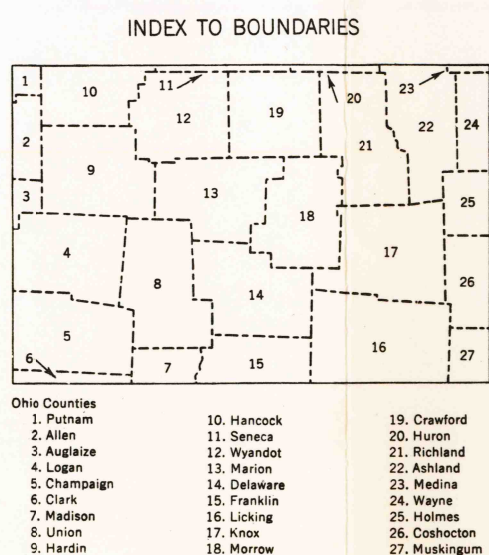


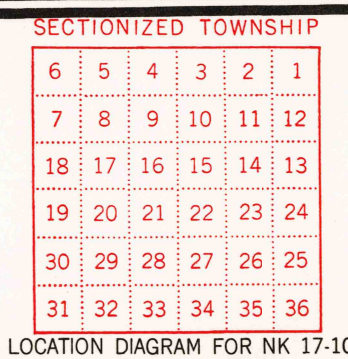
Prepared under the direction of the Chief of Engineers, by the Corps of Engineers, U. S. Army Map Service (AM), Washington, D. C. Compiled in 1948 from United States Quadrangles, 1:62,500, U. S. Geological Survey and Corps of Engineers, 1901-1941; County Highway Maps, 1940; and intelligence data to 1948. Planimetric detail partially revised by photo-planimetric methods. Aerial photography 1938-1944. Road and reproduction data verified by state authorities, 1949. Control by U. S. Geological Survey, U. S. Coast and Geodetic Survey and U. S. Engineers.



TOWNSHIP OR RANGE LINE
LAND GRANT BOUNDARY

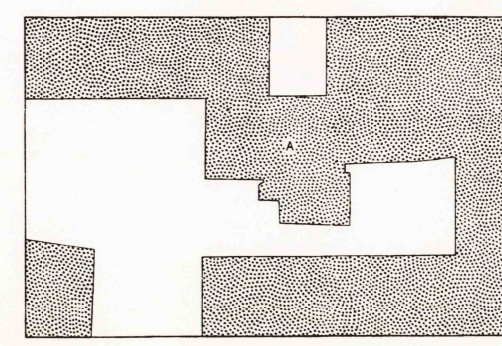


FOR SALE BY U. S. GEOLOGICAL SURVEY, WASHINGTON 25, D. C.



INTERIOR—GEOLOGICAL SURVEY, WASHINGTON, D. C.—1962
MR 2601

COVERAGE DIAGRAM



MARION, UNITED STATES
OHIO
N4000-WB200/100x200

1510