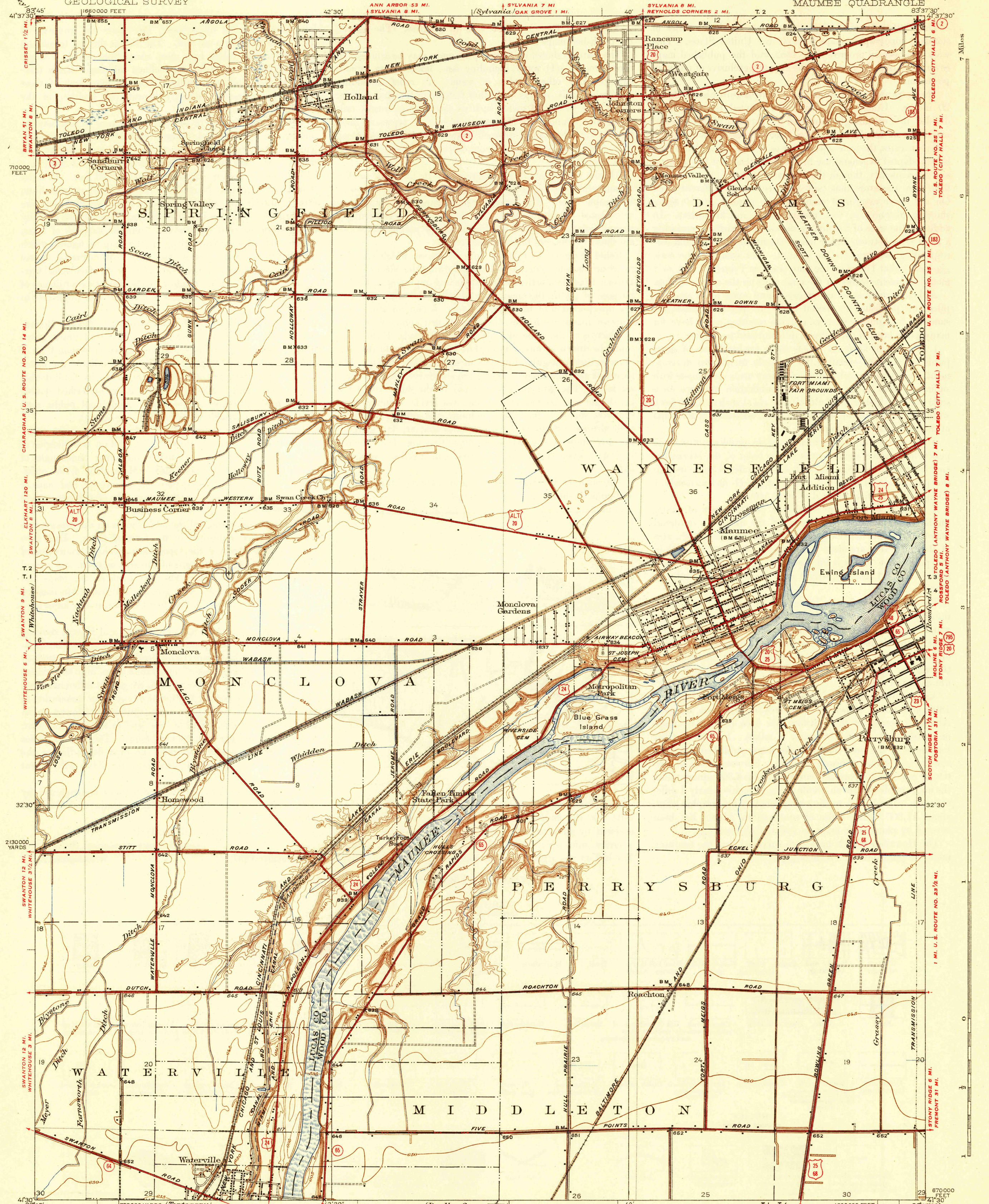


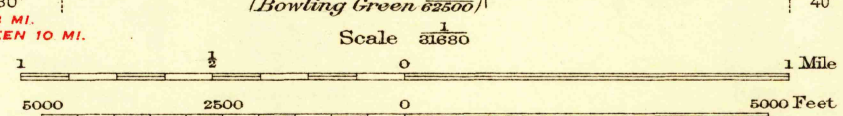
UNITED STATES
DEPARTMENT OF THE INTERIOR
GEOLOGICAL SURVEY

TOLEDO (CITY HALL) 7 MI.
OHIO
MAUMEE QUADRANGLE



Topography by H.A. Bean, J.O. Kilmartin, and C.W. Birdseye
Compiled in part from aerial photographs
Surveyed in 1934 and 1935

GRAND RAPIDS 11 MI.
NAPOLEON 27 MI.
HASKING 3 MI.
BOWLING GREEN 10 MI.



Contour interval 5 feet
Datum is mean sea level

HARD IMPERVIOUSLY SURFACED ROADS
OTHER MAIN TRAVELED ROADS
UNITED STATES ROUTE NUMBER
STATE ROUTE NUMBER

1690000 FEET
Polyconic projection, 1927 North American datum
5000 yard grid based on U.S. zone system, B
10000 foot grid based on Ohio (North)
rectangular coordinate system
BOWLING GREEN 9 MI.
FINDLAY 33 MI.

MAUMEE, OHIO
Edition of 1938

RETURN TO:
USGS HISTORICAL MAP ARCHIVES