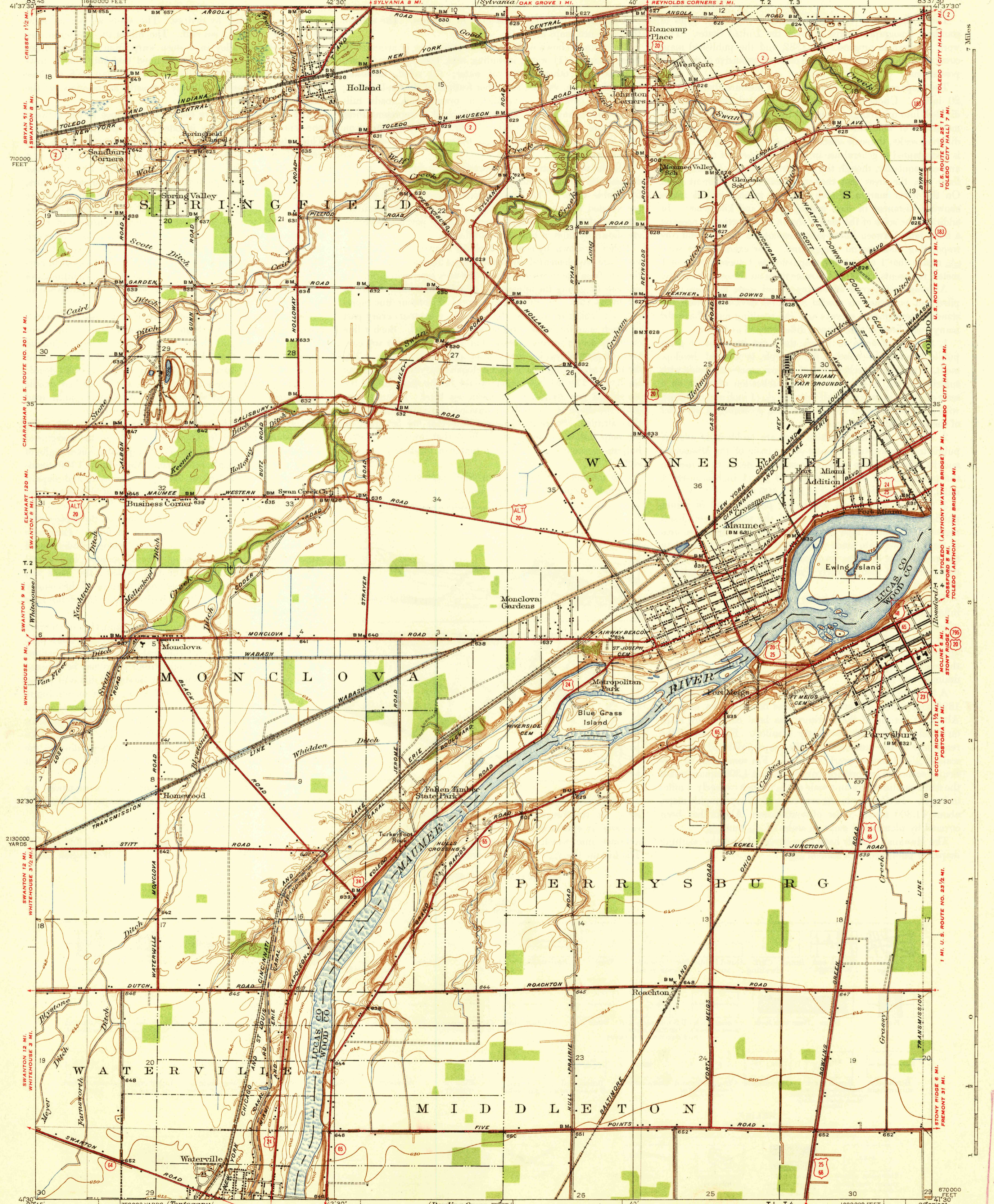


UNITED STATES
DEPARTMENT OF THE INTERIOR
GEOLOGICAL SURVEY

U. S. G. S.
FILE COPY
Inspection and Editing.

TOLEDO (CITY HALL) 2 MI.
OHIO (18)
MAUMEE QUADRANGLE



Topography by H.A. Bean, J.O. Kilmartin, and C.W. Birdseye
Compiled in part from aerial photographs
Surveyed in 1934 and 1935

GRAND RAPIDS 11 MI.
NAPOLEON 27 MI.
HASKINS 3 MI.
BOWLING GREEN 10 MI.

Scale 1:50,000
1 Mile
8000 Feet
1 Kilometer

Contour interval 5 feet
Datum is mean sea level

USGS
Historic File
Digitally Restored

Polyconic projection, 1927 North American datum
5000 yard grid based on U.S. zone system, B
10000 foot grid based on Ohio (North)
rectangular coordinate system
BOWLING GREEN 9 MI.
FINDLAY 23 MI.

MAUMEE, OHIO
Edition of 1938
2645:0650; 74;

UNITED STATES ROUTE NUMBER
STATE ROUTE NUMBER

U. S. G. S.
FILE COPY
Inspection and Editing.