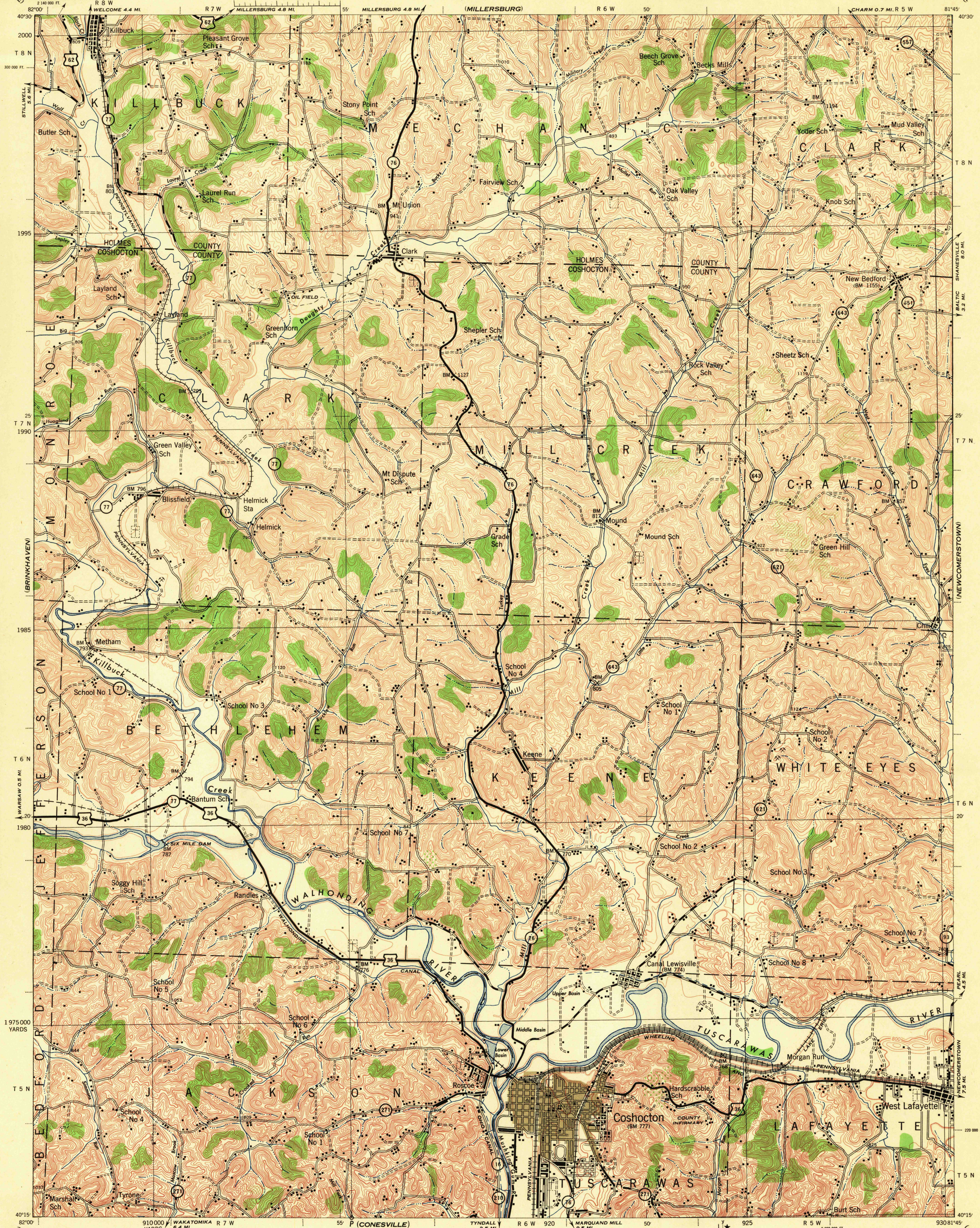


OHIO 1:62,500

WAR DEPARTMENT  
CORPS OF ENGINEERS, U. S. ARMY

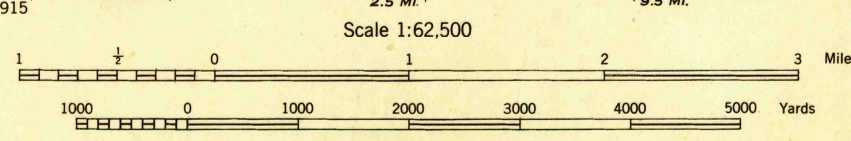
FIRST EDITION - AMS 1

COSHOCTON QUADRANGLE  
15 MINUTE SERIES



First Edition, 1943.  
Prepared under the direction of the Chief of Engineers, U. S. Army, 1943.  
Army Map Service, Kansas City unit.  
Based on U. S. G. S. quadrangle, Coshocton, 1:62,500 (1915).  
Control by U. S. Geological Survey.  
Surveyed in cooperation with the State of Ohio, 1912-1913.  
Revised from single lens vertical aerial photographs.  
Aerial photography, A. A. Department of Agriculture, 1940.  
Polyconic Projection, North American Datum.

**ROAD CLASSIFICATION 1943**  
Dependable hard surface, heavy-duty road. U.S. Route 160  
Dependable hard surface, all-weather road. U.S. Route 30  
Secondary hard surface, all-weather road. State Route  
Dirt road. State Route  
More than two lanes indicated by note along road with tick at point of change. 3 LANE 4 LANE



CONTOUR INTERVAL 20 FEET  
DATUM IS MEAN SEA LEVEL

FIVE THOUSAND YARD GRID COMPUTED FROM GRID SYSTEM FOR PROGRESSIVE MAPS IN THE U. S., ZONE 18, U. S. C. & G. S. SPECIAL PUBLICATION NO. 59  
THE LAST THREE DIGITS OF THE GRID NUMBERS ARE OMITTED  
OHIO STATE GRID ZONE NORTH, IS INDICATED BY DOTTED TICKS OUTSIDE THE NEAT LINE AT 10,000 FOOT INTERVALS.  
NOTE: OFFICERS USING THIS MAP WILL MARK HEREIN CORRECTIONS AND ADDITIONS WHICH COME TO THEIR ATTENTION AND MAIL DIRECT TO THE CHIEF OF ENGINEERS, WASHINGTON, D. C.

Scale 1:62,500  
4 / 44  
APPROXIMATE MEAN DECLINATION 1943  
ANNUAL VARIATION 0.8" (S) PER CENTURY  
MAGNETIC NORTH  
UTM PROGRAM USE TO OBTAIN GRID COORDINATES. 50 METERS PER GRID SQUARE. GRID COORDINATES ARE GIVEN IN METERS. THE GRID NORTH AND MAGNETIC NORTH OF POINTS degree scale at the north edge of the map.

LEGEND  
BRUSH

**HISTORICAL FILES**  
COSHOCTON, OHIO  
N4015-W8145/15

(DO NOT REMOVE) 780