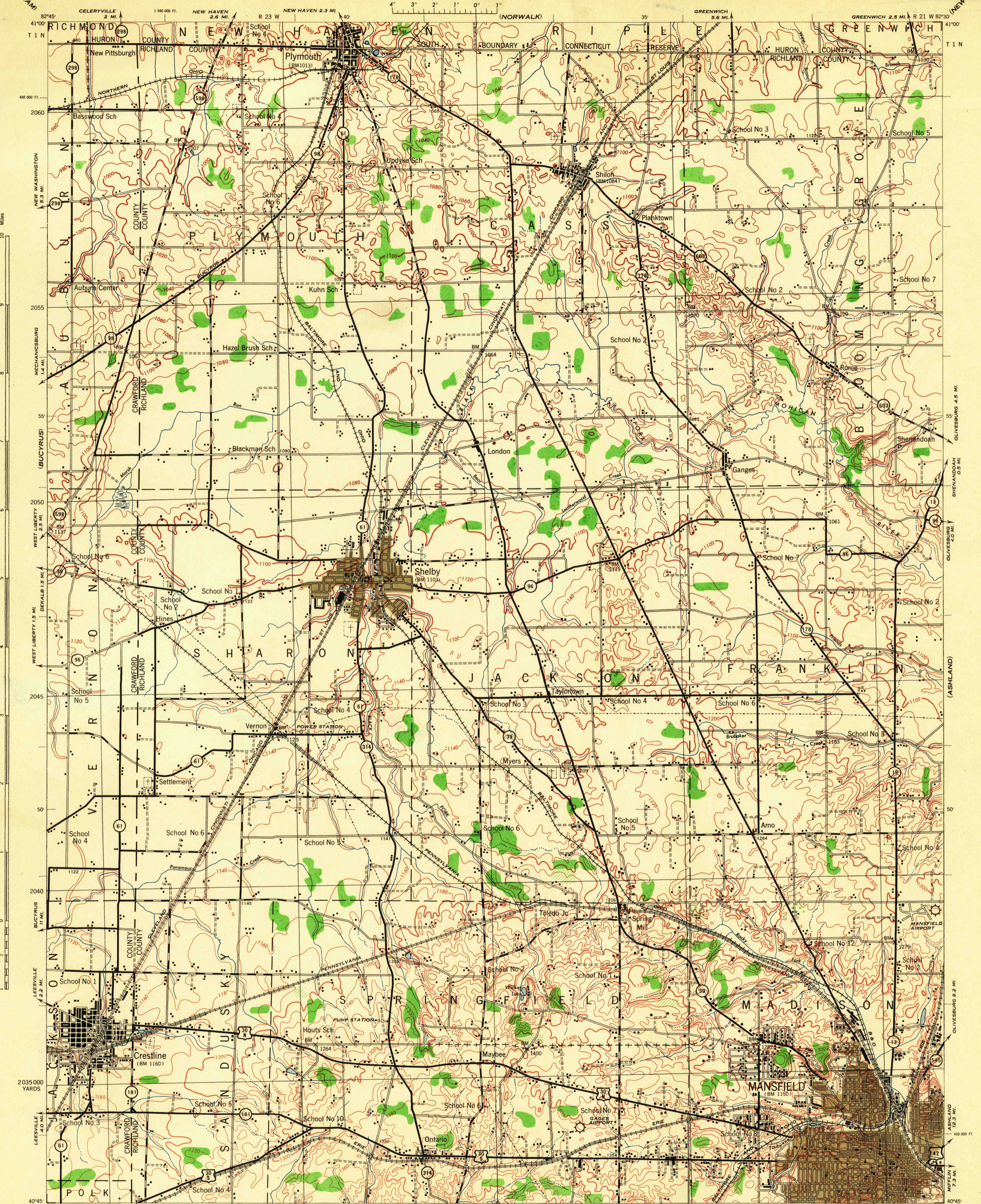


(NEW LONDON)

(ASHLAND)

(PERRYVILLE)



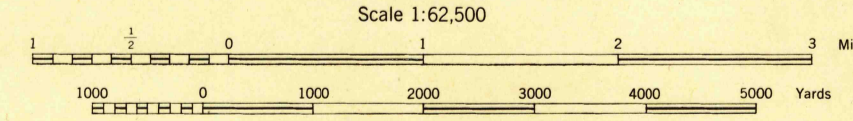
10 Miles

2035 000 YARDS

First Edition, 1943.
 Prepared under the direction of the Chief of Engineers, U. S. Army, 1943.
 Army Map Service, Kansas City unit.
 Based on U. S. G. S. quadrangle, Crestline, 1:62,500 (1915).
 Control by U. S. Geological Survey.
 Surveyed in cooperation with the State of Ohio, 1912-13.
 Revised from single lens vertical aerial photographs.
 Aerial photography, A. A. A., Department of Agriculture, 1939-40.
 Polyconic Projection, North American Datum.

ROAD CLASSIFICATION 1943

Dependable hard surface, heavy-duty road	Loose surface graded, dry weather road	U. S. Route
Secondary, hard surface, lighter use	Dirt road	State Route
More than two lanes indicated by note along road with tick at point of change		3 LANE 4 LANE



CONTOUR INTERVAL 20 FEET
 DATUM IS MEAN SEA LEVEL

FIVE THOUSAND YARD GRID COMPUTED FROM "GRID SYSTEM FOR PROGRESSIVE MAPS IN THE U. S." ZONE B, U. S. C. & G. S. SPECIAL PUBLICATION NO. 59
 THE LAST THREE DIGITS OF THE GRID NUMBERS ARE OMITTED
 OHIO STATE GRID ZONE NORTH, IS INDICATED BY DOTTED TICKS OUTSIDE THE NEAT LINE AT 1000 FOOT INTERVALS.
 NOTE: OFFICERS USING THIS MAP WILL MARK REVISION CORRECTIONS AND ADDITIONS WHICH COME TO THEIR ATTENTION AND MAIL DIRECT TO THE CHIEF OF ENGINEERS, WASHINGTON, D. C.

APPROXIMATE MEAN DECLINATION 1943
 FOR CENTER OF SHEET
 ANNUAL MAGNETIC CHANGE 1/2 DEGREE

Use diagram only to obtain numerical values. To determine magnetic north line, connect the pivot point "P" on the south edge of the map with the value of the angle between GRID NORTH and MAGNETIC NORTH, as plotted on the degree scale of the north edge of the map.

LEGEND

BRUSH