

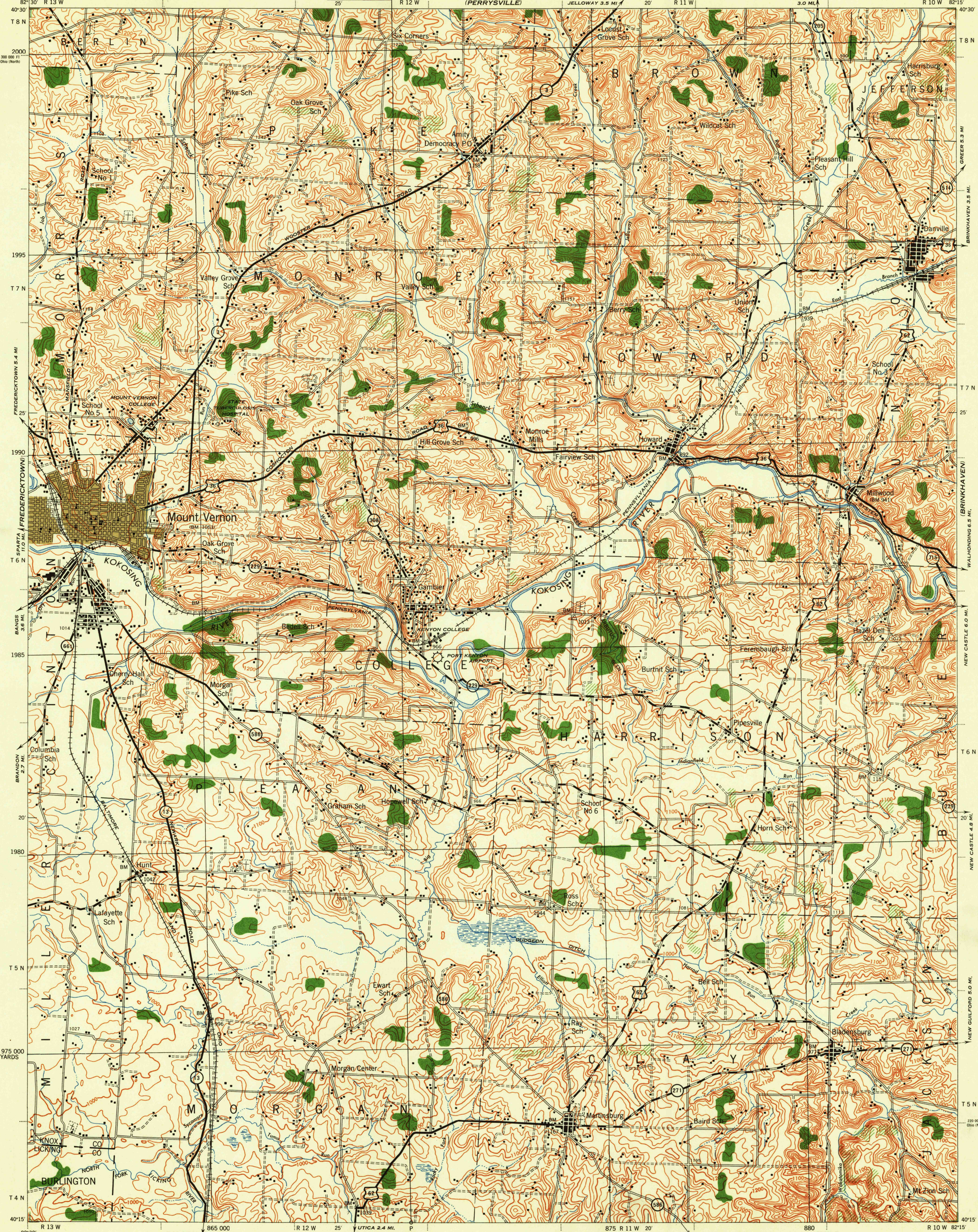
OHIO 1:62,500

WAR DEPARTMENT
CORPS OF ENGINEERS, U. S. ARMY

FIRST EDITION-AMS 1

GAMBIER QUADRANGLE
15 MINUTE SERIES

LOUDONVILLE



First Edition, 1943.
Prepared under the direction of the Chief of Engineers, U. S. Army, 1943.
Army Map Service, Kansas City unit.
Based on U. S. G. S. quadrangle, Gambier, 1:62,500 (1914).
Horizontal control by U. S. Geological Survey.
Surveyed in cooperation with the State of Ohio, 1912.
Revised from single lens vertical aerial photographs.
Aerial Photography - A. A. Department of Agriculture, 1940.
Polyconic Projection, North American Datum.

ROAD CLASSIFICATION 1943

Dependable hard surface, heavy-duty road.	Loose surface graded, dry weather road.	U. S. Route
Secondary, hard surface, all-weather road.	Dirt road.	State Route
More than two lanes indicated by note along road with tick at point of change.		3 LANE 1 4 LANE

Scale 1:62,500

1 1/2 0 1 2 3 Miles

1000 0 1000 2000 3000 4000 5000 Yards

CONTOUR INTERVAL 20 FEET
DATUM IS MEAN SEA LEVEL

FIVE THOUSAND YARD GRID COMPUTED FROM GRID SYSTEM FOR PROGRESSIVE MAPS
IN THE U. S. - ZONE "B" - U. S. C. & G. S. SPECIAL PUBLICATION NO. 59

THE LAST THREE DIGITS OF THE GRID NUMBERS ARE OMITTED

OHIO STATE GRID ZONE NORTH, IS INDICATED BY DOTTED TICKS
OUTSIDE THE NEAT LINE AT 10,000 FOOT INTERVALS.

NOTE: OFFICERS USING THIS MAP WILL WANT PERIODIC CORRECTIONS AND ADDITIONS WHICH COME
TO THEIR ATTENTION AND MAIL DIRECT TO THE CHIEF OF ENGINEERS, WASHINGTON, D. C.

HISTORICAL FILES

(DO NOT REMOVE)

FILE COPY

Use diagram only to obtain numerical values.
To determine magnetic north line, connect the
pivot point "P" on the south edge of the map
with the value of the angle between grid
magnetic north, as plotted on the degree
the north edge of the map.

LEGEND

BRUSH

GAMBIER, OHIO
N4015-W8215/15