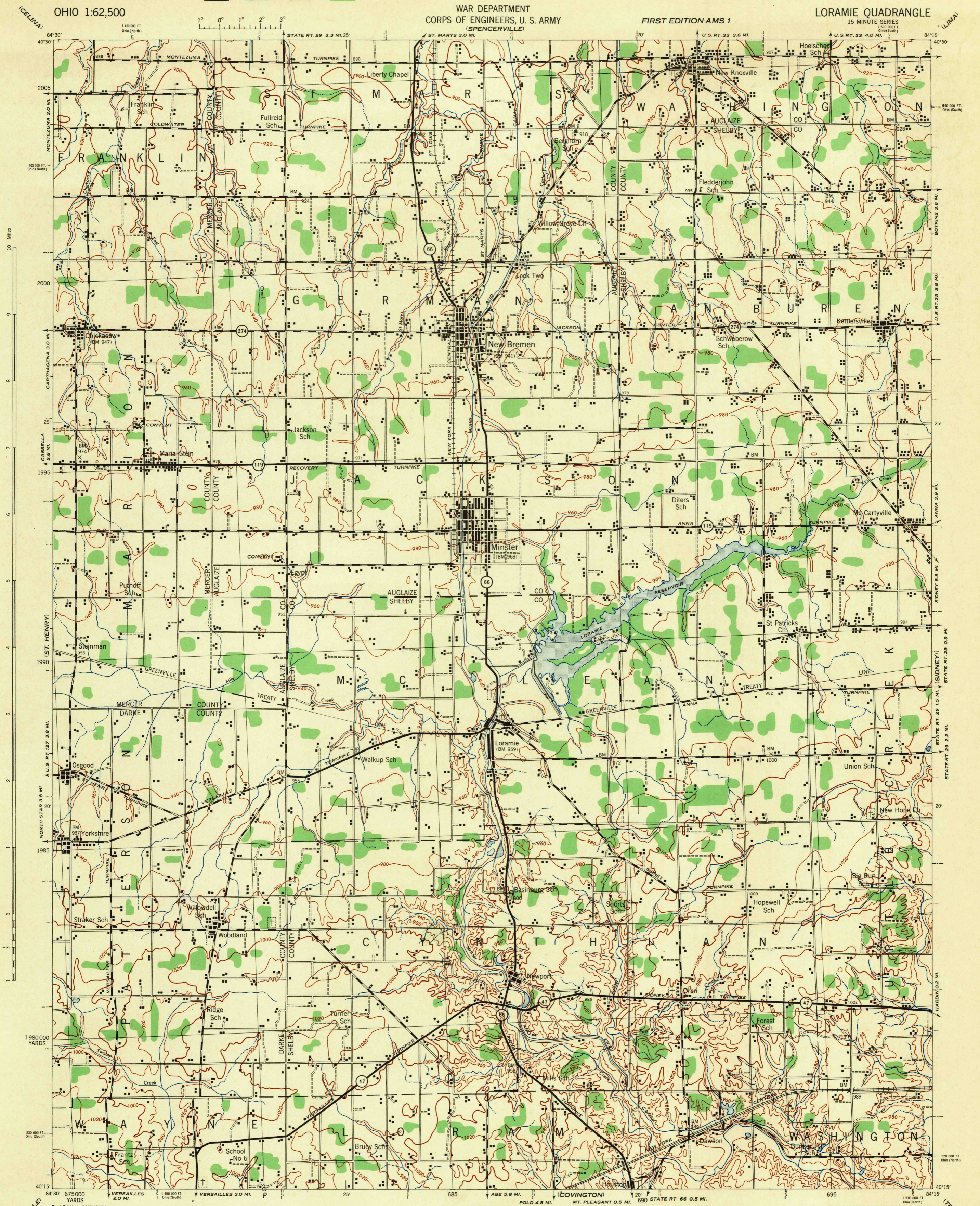


WAR DEPARTMENT  
CORPS OF ENGINEERS, U. S. ARMY  
(SPENCERVILLE)

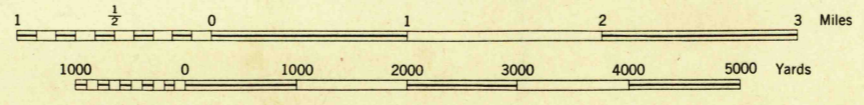
FIRST EDITION AMS 1

LORAMIE QUADRANGLE  
15 MINUTE SERIES

OHIO 1:62,500



Scale 1:62,500



CONTOUR INTERVAL 20 FEET  
DATUM IS MEAN SEA LEVEL

FIVE THOUSAND YARD GRID COMPUTED FROM GRID SYSTEM FOR PROGRESSIVE MAPS  
IN THE U. S. ZONE BY U. S. C. & G. S. SPECIAL PUBLICATION NO. 59.  
THE LAST THREE DIGITS OF THE GRID NUMBERS ARE OMITTED.  
THE STATE GRIDS ARE INDICATED FOR OHIO ZONE NORTH BY TICKS  
FOR ZONE SOUTH BY — THE NEXT LINE AT 10,000 FOOT INTERVALS.  
NOTE: OFFICERS USING THIS MAP WILL MARK MERIDON CORRECTIONS AND ADDITIONS WHICH COME  
TO THEIR ATTENTION AND MAIL DIRECT TO THE CHIEF OF ENGINEERS, WASHINGTON, D. C.

First Edition (AMS-1) 1944.  
Prepared under the direction of the Chief of Engineers, U. S. Army, by the  
Army Map Service (SU), U. S. Army, Washington, D. C., 1943.  
Based on U. S. S. quadrangle, Loramie, 1:62,500 (1911).  
Control by U. S. Geological Survey.  
Surveyed in cooperation with the State of Ohio, 1939.  
Revised from single lens vertical aerial photographs.  
Aerial photography by A. A. Department of Agriculture, 1938-1940.  
Polyconic Projection, North American Datum, 1927.

ROAD CLASSIFICATION 1943  
Dependable hard surface ————— Loop surface graded, dry weather road. U. S. Route  
Heavy duty road ————— State Route  
Secondary hard surface ————— Dotted line State Route  
All weather road ————— Dashed line State Route  
More than two lanes indicated by note along road with tick at point of change. 3 LANE | 4 LANE

4/44 SX

LEGEND  
BRUSH

HISTORICAL FILES

LORAMIE, OHIO  
N4015-W8415/15

(DO NOT REMOVE)

732-S-II-V/2