

(ASHLAND)

OHIO 1:62,500

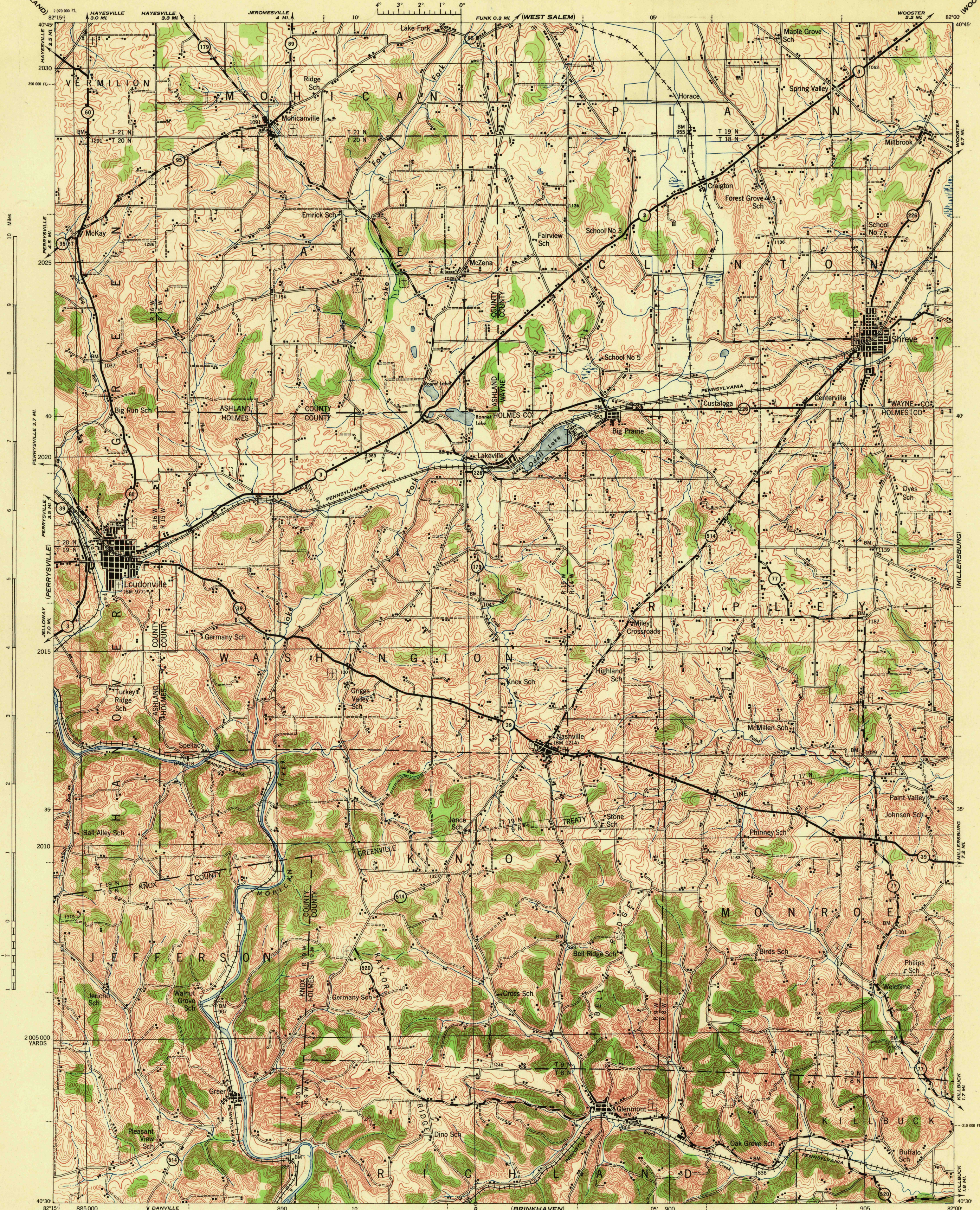
WAR DEPARTMENT
CORPS OF ENGINEERS, U. S. ARMY

FIRST EDITION-AMS 1

LOUDONVILLE QUADRANGLE

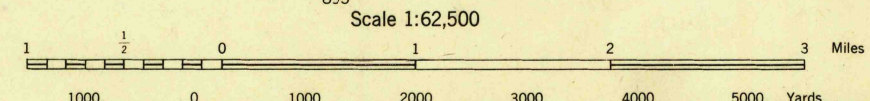
15 MINUTE SERIES

(WOOSTER)



First Edition, 1943.
 Prepared under the direction of the Chief of Engineers, U. S. Army, 1943.
 Army Map Service, Kansas City unit.
 Based on U. S. G. S. quadrangle, Loudonville, 1:62,500 (1914).
 Control by U. S. Geological Survey.
 Surveyed in cooperation with the State of Ohio, 1912.
 Revised from single lens vertical aerial photographs.
 Aerial photography: A. A. Department of Agriculture, 1940-41.
 Polyconic Projection, North American Datum.

ROAD CLASSIFICATION 1943
 Dependable hard surface, heavy-duty road. Loose-surface graded, dry weather road. U. S. Route
 Secondary, hard surface, all-weather road. Dirt road. State Route
 More than two lanes indicated by note along road with tick at point of change. 2-LANE 1-4-LANE



CONTOUR INTERVAL 20 FEET
 DATUM IS MEAN SEA LEVEL
 FIVE THOUSAND YARD GRID COMPUTED FROM GRID SYSTEM FOR PROGRESSIVE MAPS IN THE U. S. ZONE B, U. S. C. & S. SPECIAL PUBLICATION NO. 59
 THE LAST THREE DIGITS OF THE GRID NUMBERS ARE OMITTED
 OHIO STATE GRID ZONE NORTH IS INDICATED BY DOTTED TICKS OUTSIDE THE NEAT LINE AT 1000 FOOT INTERVALS
 NOTE: OFFICERS USING THIS MAP WILL MARK HEREON CORRECTIONS AND ADDITIONS WHICH COME TO THEIR ATTENTION AND MAIL DIRECT TO THE CHIEF OF ENGINEERS, WASHINGTON, D. C.

H. STORCK FILES
 (DO NOT REMOVE)

LEGEND
 BRUSH

LOUDONVILLE, OHIO
 N4030-W8200/15

FILE COPY

764-N-IV-E/2