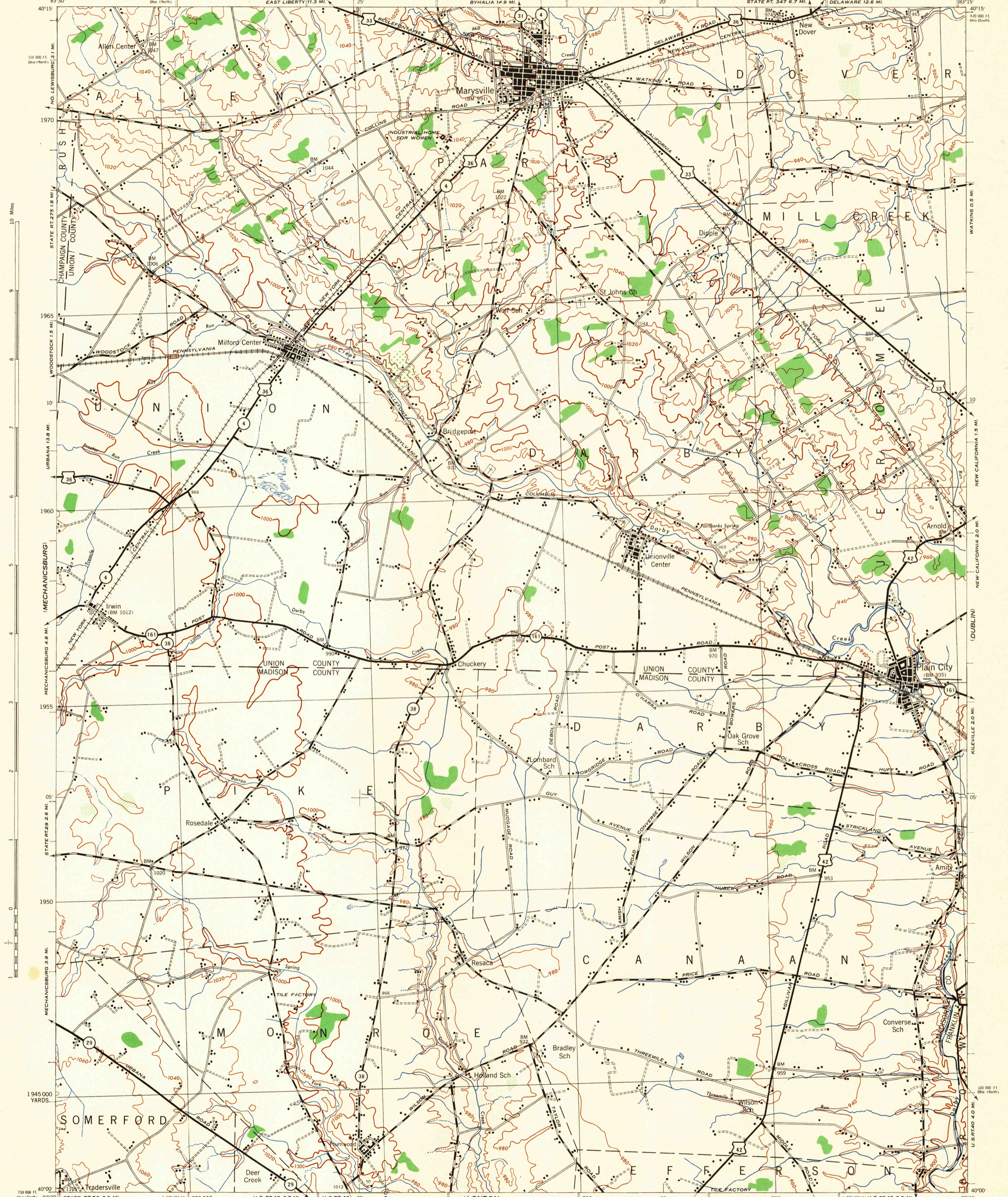


OHIO 1:62,500

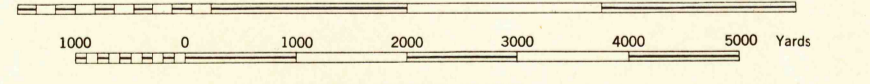
WAR DEPARTMENT
CORPS OF ENGINEERS, U. S. ARMY

FIRST EDITION-AMS 1

MILFORD CENTER QUADRANGLE
15 MINUTE SERIES



Scale 1:62,500



CONTOUR INTERVAL 20 FEET
DATUM IS MEAN SEA LEVEL

FIVE THOUSAND YARD GRID COMPUTED FROM GRID SYSTEM FOR PROGRESSIVE MAPS
IN THE U. S. ZONE II, U. S. & G. S. SPECIAL PUBLICATION NO. 59

THE LAST THREE DIGITS OF THE GRID NUMBERS ARE OMITTED
BY TICKS OUTSIDE THE NEAT LINE AT 10,000 FT. INTERVALS
THE STATE GRIDS ARE INDICATED FOR OHIO ZONE NORTH BY TICKS FOR OHIO ZONE SOUTH

NOTE: OFFICERS USING THIS MAP WILL MARK HEREON CORRECTIONS AND ADDITIONS WHICH COME
TO THEIR ATTENTION AND WILL DIRECT TO THE CHIEF OF ENGINEERS, WASHINGTON, D. C.

First Edition (AMS 1), 1944
Prepared under the direction of the Chief of Engineers, U. S. Army, by the
Army Map Service (SU), U. S. Army, Washington, D. C., 1943
Based on U. S. S. quadrangle, Milford Center, 1:62,500 (1916).
Control by U. S. Geological Survey
Surveyed in cooperation with the State of Ohio, 1914.
Revised from single lens vertical aerial photographs.
Aerial photography by A. A. Department of Agriculture, 1939-40-41.
Polyconic Projection, North American Datum.

ROAD CLASSIFICATION 1943
Dependable hard surface, heavy-duty road
Loose-surface graded, dry weather road
Secondary, hard surface, all-weather road
Dirt road
State Route
More than two lanes indicated by note along road with tick at point of change.

U. S. Route
State Route
3 LANE | 4 LANE

4/44SX
LEGEND
LOGGED OFF
BRUSH

Use diagram only to obtain numerical values.
To determine magnetic north line, connect the
pivot point "P" on the south edge of the map
with the value of the angle between GRID
NORTH AND MAGNETIC NORTH, as plotted on
the degree scale at the north edge of the map.

APPROXIMATE MEAN DECLINATION 1944
FOR CENTER OF SHEET
ANNUAL MAGNETIC CHANGE 2' DECREASE

MILFORD CENTER, OHIO
N4000-W8315/15

HISTORICAL FILES
(DO NOT REMOVE)

FILE COPY

RETURN TO CENTRAL FILE

749-S-II-11/2