

(MORROW)

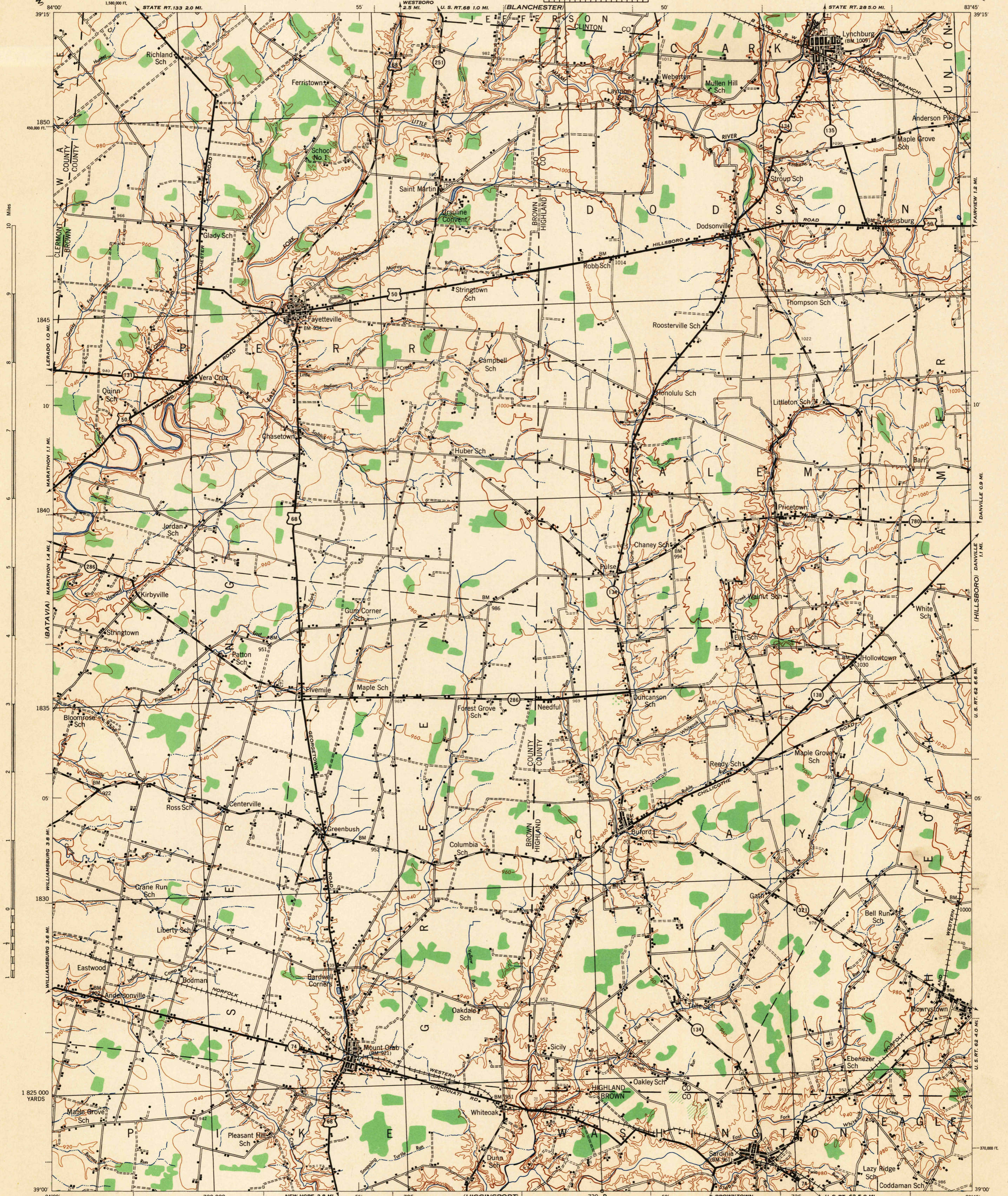
OHIO 1:62,500

WAR DEPARTMENT
CORPS OF ENGINEERS, U. S. ARMY

FIRST EDITION-AMS 1

SARDINIA QUADRANGLE
15 MINUTE SERIES

(SABINA)

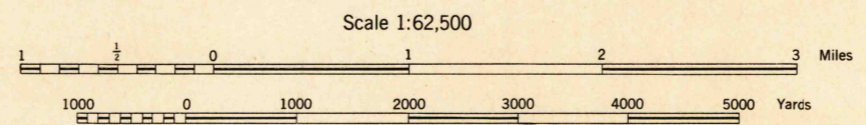


First Edition (AMS 1) 1944.

Prepared under the direction of the Chief of Engineers, U. S. Army, by the Army Map Service (SU), U. S. Army, Washington, D. C., 1944. Based on U. S. S. quadrangle, Sardinia, 1:62,500 (1917). Surveyed in cooperation with the State of Ohio, 1914-1915. Revised from single lens vertical aerial photographs. Aerial photography by A. A. Department of Agriculture, 1938. Polyconic Projection, North American Datum 1927.

ROAD CLASSIFICATION 1940

Dependable hard-surface, heavy-duty road.	Loose-surface graded, dry weather road.	U. S. Route
Secondary, hard-surface, all-weather road.	Dirt road.	State Route
More than two lanes indicated by note along road with tick at point of change.		3 LANE 4 LANE



Scale 1:62,500
CONTOUR INTERVAL 20 FEET
DATUM IS MEAN SEA LEVEL

FIVE THOUSAND YARD GRID COMPUTED FROM "GRID SYSTEM FOR PROGRESSIVE MAPS IN THE U. S. ZONE B" U. S. G. & S. SPECIAL PUBLICATION NO. 59
THE LAST THREE DIGITS OF THE GRID NUMBERS ARE OMITTED
OHIO STATE GRID ZONE SOUTH IS INDICATED BY DOTTED TICKS OUTSIDE THE NEAT LINE AT 10,000 FT. INTERVALS
NOTE: OFFICERS USING THIS MAP WILL MARK NECESSARY CORRECTIONS AND NOTATIONS WHICH COME TO THEIR ATTENTION AND WILL DIRECT TO THE CHIEF OF ENGINEERS, WASHINGTON, D. C.

APPROXIMATE MAGNETIC DECLINATION 1944 FOR CENTER OF SHEET
ANNUAL MAGNETIC CHANGE 2" DECREASE

Use diagram only to obtain numerical values. To determine magnetic north line, connect the given point "P" on the south edge of the map with the value indicated on the magnetic grid. NORTH AND MAGNETIC NORTH, as plotted on this diagram, are shown on the right edge of the map.

LEGEND

	BRUSH
--	-------

SARDINIA, OHIO
N3900-W8345/15

HISTORICAL FILES

(DO NOT REMOVE)

750-S-II-4/2