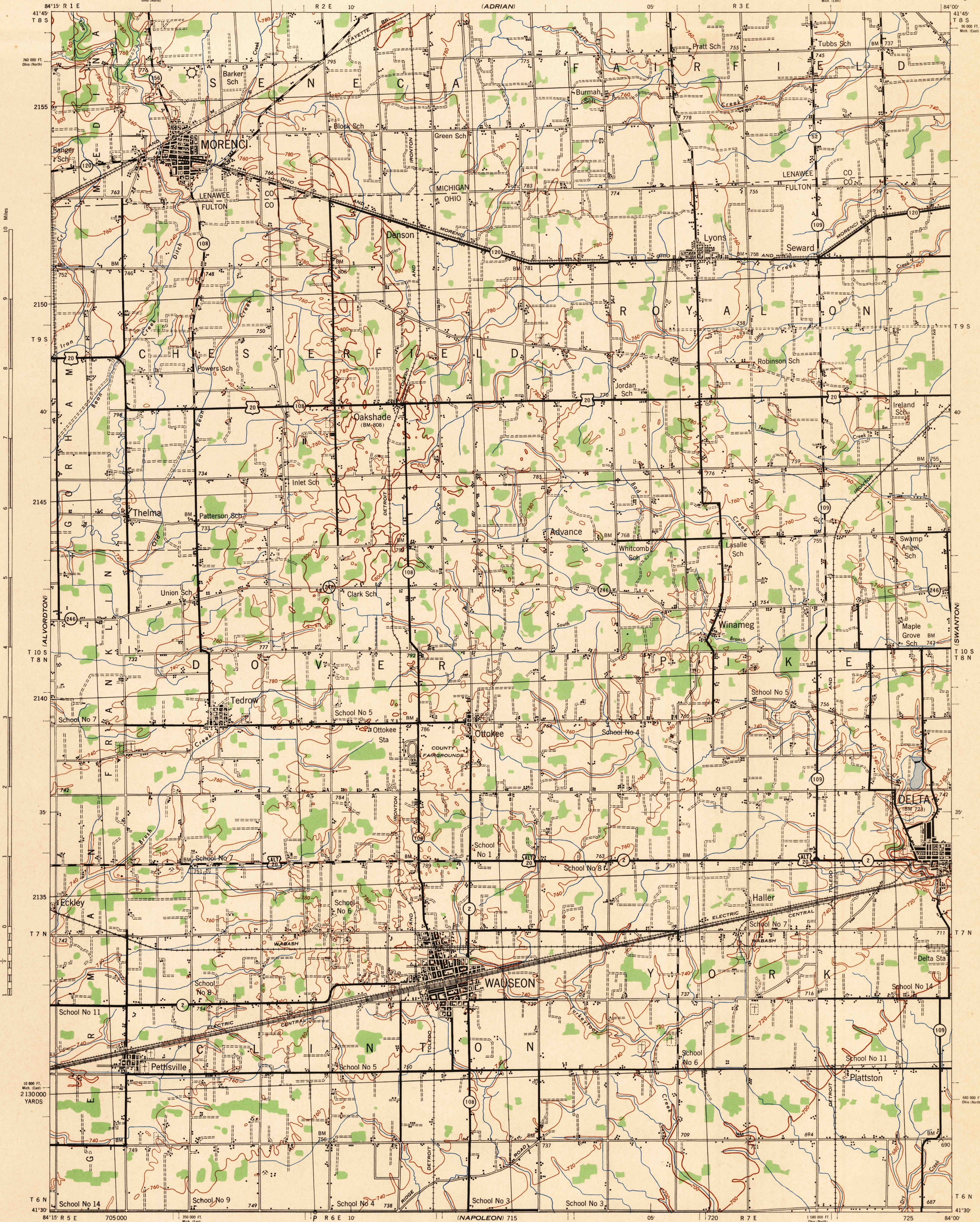


(BLISSFIELD)



First Edition (AMS 1), 1943.
Prepared under the direction of the Chief of Engineers, U. S. Army, by the
Army Map Service, East St. Louis Unit, 1942.
Based on U. S. G. S. quadrangle, Wauseon, 1:62,500 (1913).
Horizontal control by U. S. C. & G. S. and U. S. G. S.
Vertical control by U. S. C. & G. S.
Surveyed in cooperation with the States of Ohio and Michigan, 1911.
Revised from single lens vertical aerial photographs.
Aerial photography: A. A. Department of Agriculture, 1939-40.
Polyconic Projection, North American Datum.

ROAD CLASSIFICATION 1942

Dependable hard-surface
heavy-duty road
Secondary hard-surface
light-duty road
Dirt road
State Route
U. S. Route
More than two lanes indicated by note along road with tick at point of change.

Scale 1:62,500

CONTOUR INTERVAL 20 FEET
DATUM IS MEAN SEA LEVEL

FIVE THOUSAND YARD GRID COMPUTED FROM GRID SYSTEM FOR PROGRESSIVE MAPS
IN THE U. S. G. S. C. & G. S. SPECIAL PUBLICATION NO. 85
THE LAST THREE DIGITS OF THE GRID NUMBERS ARE OMITTED
THE STATE GRID IS INDICATED FOR OHIO, ZONE NORTH BY
BY TICKS OUTSIDE THE NEAT LINE AT 10,000 FOOT INTERVALS
NOTE: OFFICERS USING THIS MAP WILL MARK HEREON CORRECTIONS AND ADDITIONS WHICH COME
TO THEIR ATTENTION AND MAIL DIRECT TO THE CHIEF OF ENGINEERS, WASHINGTON, D. C.

Use diagram only to obtain numerical values.
To determine magnetic north line, connect the
pivotal point "P" on the south edge of the map
with the value of the angle between GRID
NORTH and MAGNETIC NORTH, as plotted on
the degree scale at the north edge of the map.

APPROXIMATE MEAN DECLINATION 1944
FOR CENTER OF SHEET
ANNUAL MAGNETIC CHANGE 11' DECREASE

ARMY MAP SERVICE, U. S. ARMY, WASHINGTON, D. C. 10877

4/44 SX

WAUSEON, OHIO-MICH.

N4130-W8400/15

HISTORICAL FILES
(DO NOT REMOVE)