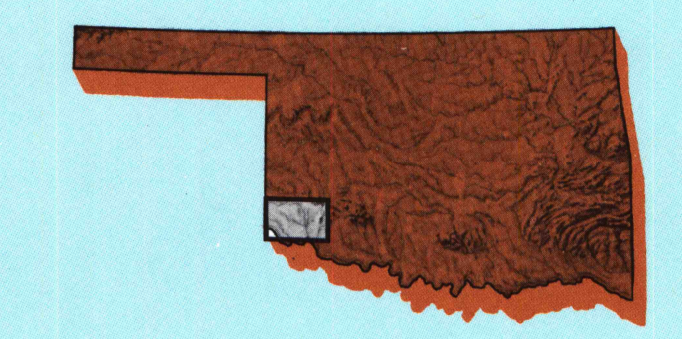


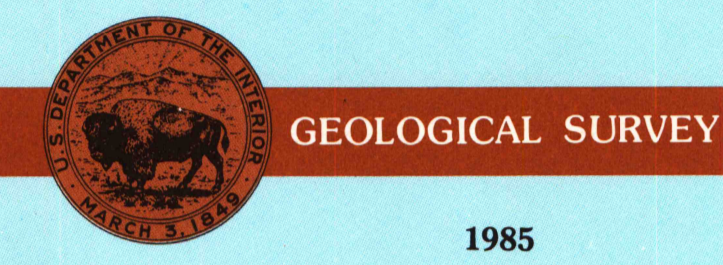
Altus OKLAHOMA-TEXAS

1:100 000-scale metric
topographic map



30 X 60 MINUTE QUADRANGLE
SHOWING

- Contours and elevations in meters
- Highways, roads and other manmade structures
- Water features
- Woodland areas
- Geographic names



Produced by the United States Geological Survey
 Compiled from USGS 1:250 000 and 1:62 500-scale topographic maps dated 1961-1971. Planimetry revised from aerial photographs taken 1983 and other source data. Revised information not field checked. Map edited 1985.
 Projection and 10 000-meter grid, zone 14, Universal Transverse Mercator.
 25 000-foot grid ticks based on Oklahoma coordinate system, south zone and Texas coordinate system, north central zone, 1927 North American Datum.
 To place on the predicted North American Datum 1983, move the projection lines 3 meters south and 38 meters east.
 There may be private inholdings within the boundaries of the National or State reservations shown on this map.

CONTOUR INTERVAL 10 METERS
 NATIONAL GEODETIC VERTICAL DATUM OF 1929
 ELEVATIONS SHOWN TO THE NEAREST METER

THIS MAP COMPLIES WITH NATIONAL MAP ACCURACY STANDARDS

CONVERSION TABLE		DECLINATION DIAGRAM		ADJOINING MAPS		
Meters	Feet	Magnetic Declination		1	2	3
1	3.2808	Magnetic Declination		4	5	6
2	6.5617	Magnetic Declination		7	8	
3	9.8425	Magnetic Declination				
4	13.1234	Magnetic Declination				
5	16.4042	Magnetic Declination				
6	19.6850	Magnetic Declination				
7	22.9659	Magnetic Declination				
8	26.2467	Magnetic Declination				
9	29.5275	Magnetic Declination				
10	32.8084	Magnetic Declination				

FOR SALE BY U.S. GEOLOGICAL SURVEY
 DENVER, COLORADO 80225, OR RESTON, VIRGINIA 22092

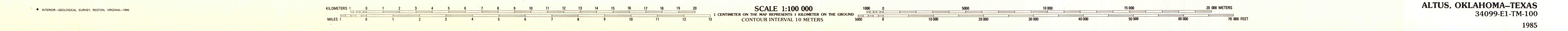
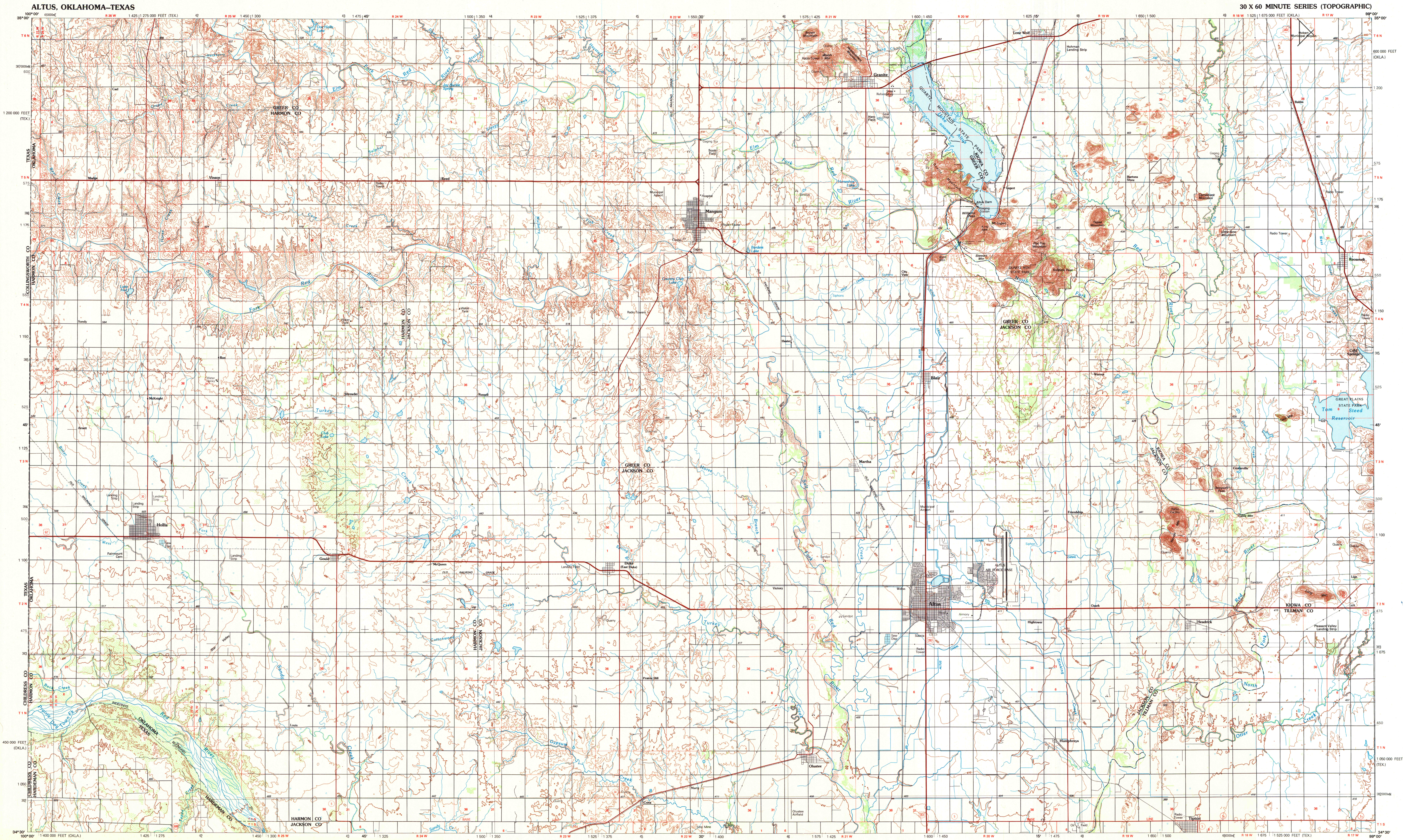
A.H. ROBINSON
 MAP LIBRARY
 OCT 1 5 1990
 U.S. Regional
 Depository Copy
 DO NOT DISCARD
 University of Wisconsin
 Madison

Topographic Map Symbols

- Primary highway, hard surface
- Secondary highway, hard surface
- Light duty road, principal street, hard or improved surface
- Other road or street, trail
- Route marker: Interstate, U.S., State
- Railroad: standard gage, narrow gage
- Bridge, overpass, underpass
- Tunnel, road, railroad
- Built up area, locality, elevation
- Airport, landing field, landing strip
- National boundary
- State boundary
- County boundary
- National or State reservation boundary
- Land grant boundary
- U.S. public lands survey: range, township, section
- Range township, section, line, premarked
- Power transmission line, pipeline
- Dam, dam with lock
- Cemetery, building
- Wellhead, water well, spring
- Mine shaft: adit or cave; mine, quarry; gravel pit
- Compound, picnic area, U.S. location monument
- Ruin, cliff dwelling
- Distorted surface: strip mine, lava, sand
- Contour: index, intermediate, supplementary
- Bathymetric contours: index, intermediate
- Stream, lake, perennial, intermittent
- Rapids, large and small; falls, large and small
- Area to be submerged, marsh, water
- Land subject to controlled inundation, woodland
- Scrub, mangrove
- Orchard, vineyard

A pamphlet describing topographic maps is available on request

3006-98.02
SET



ALTUS, OKLAHOMA-TEXAS
 34099-E1-TM-100
 1985