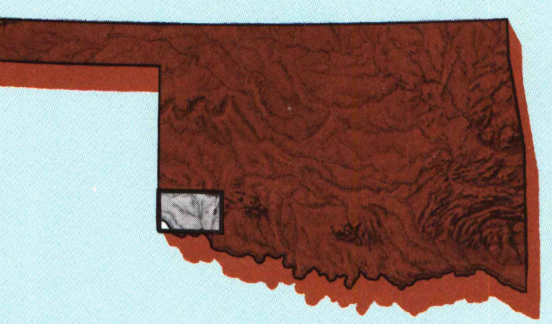


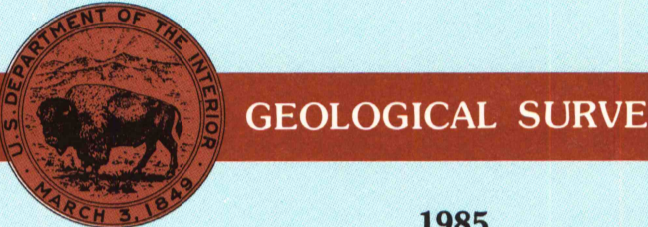
Altus OKLAHOMA-Texas

1:100 000-scale
planimetric map



30 X 60 MINUTE QUADRANGLE
SHOWING

- Elevations in meters
- Highways, roads and other manmade structures
- Water features
- Woodland areas
- Geographic names



Produced by the United States Geological Survey
 Compiled from USGS 1:24 000 and 1:52 500-scale topographic maps
 dated 1961-1971. Planimetry revised from aerial photographs
 taken 1983 and other source data. Revised information not
 field checked. Map edited 1985.
 Projection and 10 000-meter grid, zone 14,
 Universal Transverse Mercator
 25 000-foot grid ticks based on Oklahoma coordinate
 system, south zone and Texas coordinate system,
 north central zone. 1927 North American Datum
 To place on the predicted North American Datum 1983, move
 the projection lines 3 meters south and 34 meters east.
 There may be private inholdings within the boundaries of
 the National or State reservations shown on this map.

NATIONAL GEODETIC VERTICAL DATUM OF 1929
 ELEVATIONS SHOWN TO THE NEAREST METER

THIS MAP COMPLIES WITH NATIONAL MAP ACCURACY STANDARDS

CONVERSION TABLE		DECLINATION DIAGRAM		ADJOINING MAPS	
Meters	Feet	Magnetic Declination		1	2
1	3.2808	N		3	4
2	6.5616	E		4	5
3	9.8424	S		5	6
4	13.1232	W		6	7
5	16.4040	M		7	8
6	19.6848	D			
7	22.9656	A			
8	26.2464	S			
9	29.5272	E			
10	32.8080	W			

To convert meters to feet: multiply by 3.2808
 To convert feet to meters: multiply by 0.3048

UTM grid convergence (m) at center of map:
 1 Shumrock
 2 Elk City
 3 Ardmore
 4 Collinsville
 5 Lawton
 6 Chickasha
 7 Vernon
 8 Burkhardt

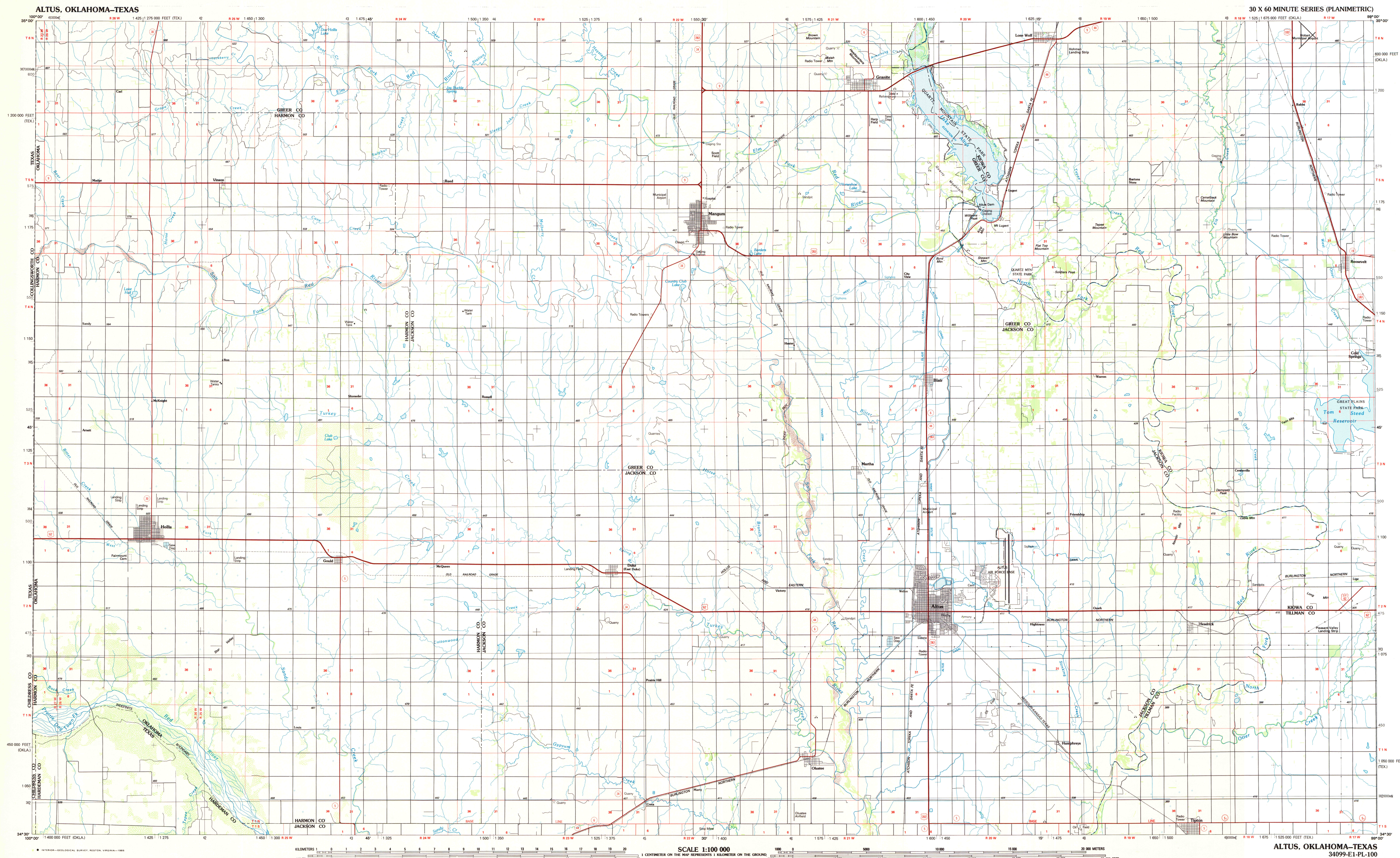
FOR SALE BY U. S. GEOLOGICAL SURVEY
 DENVER, COLORADO 80225, OR RESTON, VIRGINIA 22092

U. S. Regional
 Depository Copy
 DO NOT DISCARD

Topographic Map Symbols

- Primary highway, hard surface
- Secondary highway, hard surface
- Light duty road, principal street, hard or improved surface
- Other road or street, trail
- Roads marker: Interstate, U.S., State
- Railroad: standard gauge, narrow gauge
- Bridge, overpass, underpass
- Tunnel: road, railroad
- Built up area, locality, elevation
- Airport: landing field, landing strip
- National boundary
- State boundary
- County boundary
- National or State reservation boundary
- Land grant boundary
- U.S. public lands survey: range, township, section
- Range, township: section line: protracted
- Power transmission line, pipeline
- Dam: dam with lock
- Canal: building
- Windmill; water well; spring
- Mine shaft; adit or cave; mine, quarry, gravel pit
- Canagranod; picnic area; U.S. location monument
- Picnic site; swimming
- Disputed surface: strip mine, levee, sand
- Contours: index, intermediate, supplementary
- Bathymetric contours: index, intermediate
- Stream, lake: perennial, intermittent
- Rapids, levee and canal; weir, weir and spillway
- Area to be submerged; marsh, swamp
- Land subject to controlled inundation; woodland
- Scrub, mangrove
- Dredged; viewless

A pamphlet describing topographic maps is available on request



ALTUS, OKLAHOMA-Texas
 34099-E1-PL-100

1985

3006-916 SET JUN 4 - 1986
 ARTHUR H. ROBINSON MAP LIBRARY
 University of Wisconsin-Madison