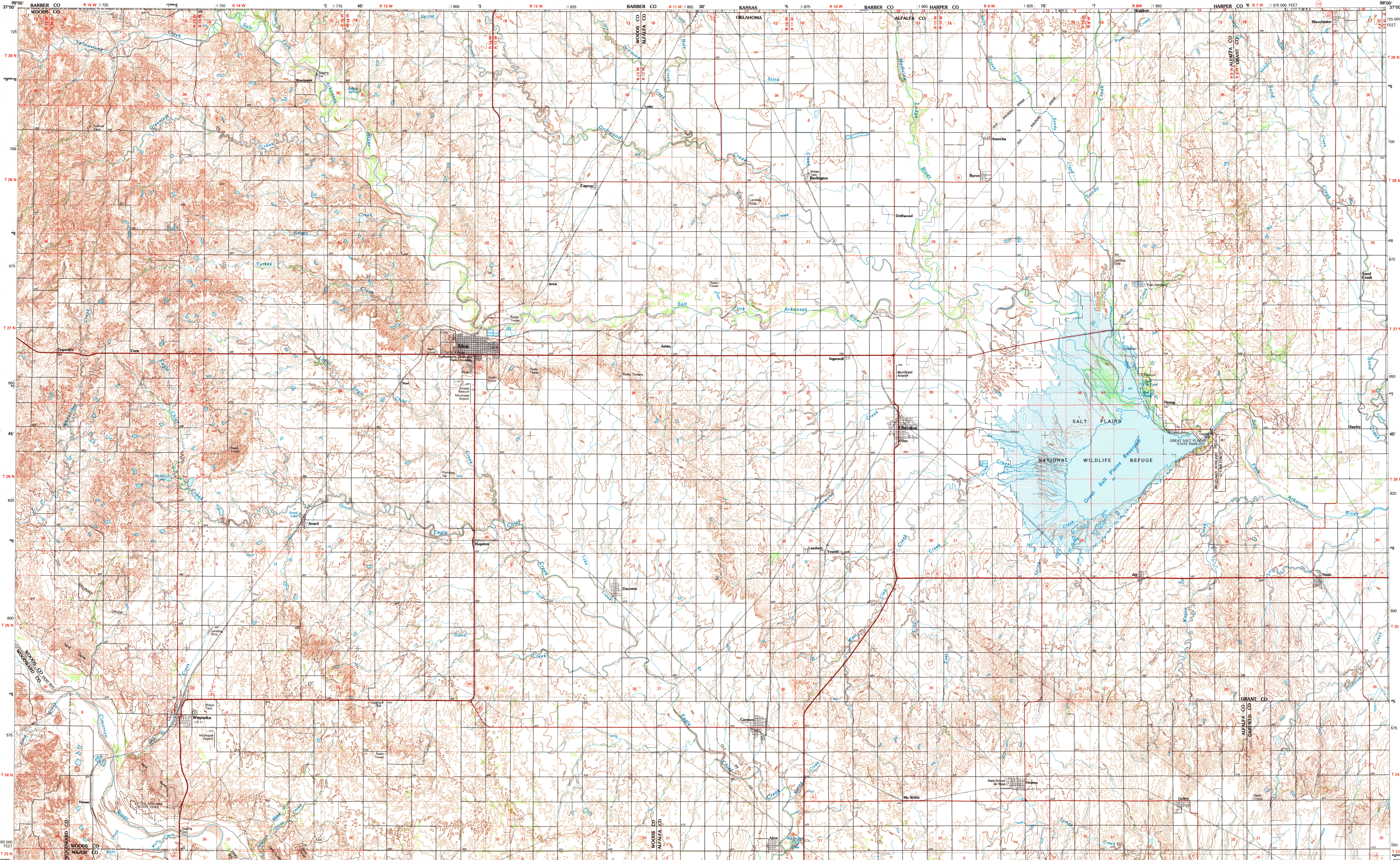
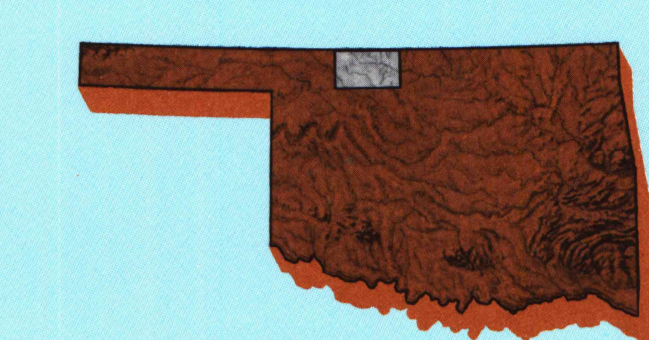


ALVA, OKLAHOMA-KANSAS

30 X 60 MINUTE SERIES (TOPOGRAPHIC)

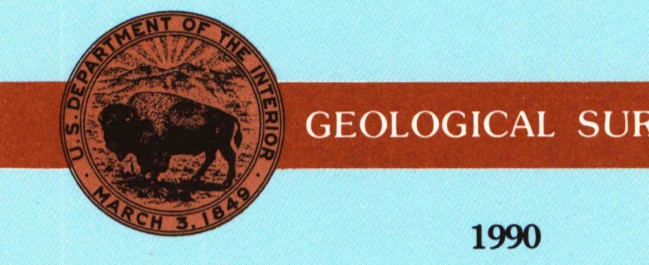


Alva OKLAHOMA-KANSAS 1:100 000-scale metric topographic map



30 X 60 MINUTE QUADRANGLE SHOWING

- Contours and elevations in meters
- Highways, roads and other manmade structures
- Water features
- Woodland areas
- Geographic names



Produced by the United States Geological Survey
 Compiled from USGS 1:24 000-scale topographic maps dated 1968-1969. Planimetry revised from aerial photographs taken 1967-68 and other source data. Revised information not field checked. Map edited 1990.
 Projection and 10 000-meter grid, zone 14, Universal Transverse Mercator
 25 000-foot grid ticks based on Oklahoma coordinate system, north zone
 1927 North American Datum
 To place on the predicted North American Datum 1983, move the projection lines 1 meter south and 31 meters east
 There may be private inholdings within the boundaries of the National or State reservations shown on this map

CONTOUR INTERVAL: 5 METERS
 NATIONAL GEODETIC VERTICAL DATUM OF 1929
 ELEVATIONS SHOWN TO THE NEAREST METER

THIS MAP COMPLIES WITH NATIONAL MAP ACCURACY STANDARDS

Meters	Feet	DECLINATION DIAGRAM		ADJOINING MAPS		
1	3.2808			1	2	3
2	6.5617			4	5	
3	9.8425					
4	13.1234					
5	16.4043					
6	19.6852					
7	22.9661					
8	26.2470					
9	29.5279					
10	32.8088					

To convert meters to feet multiply by 3.2808
 To convert feet to meters multiply by 0.3048

UTM grid convergence (GM) and false easting at center of map
 Diagram is approximate

1 Protection
 2 Medicine Lodge
 3 Wellington
 4 Bullhead
 5 Ponca City
 6 Woodward
 7 Fairview
 8 Exist

FOR SALE BY U. S. GEOLOGICAL SURVEY, DENVER, COLORADO 80225
 OR RESTON, VIRGINIA 22092

Topographic Map Symbols

- Primary highway, hard surface
- Secondary highway, hard surface
- Light duty road, principal street, hard or improved surface
- Other road or street; trail
- Route marker: Interstate; U. S.; State
- Route marker: gage; narrow gage
- Railroad: standard gage; narrow gage
- Bridge: covered; underpass
- Tunnel: road; railroad
- Built up area; locality; elevation
- Airport; landing field; landing strip
- State boundary
- National boundary
- County boundary
- National or State reservation boundary
- Land grant boundary
- U. S. public lands survey: range, township; section
- Range, township; section line, protected
- Power transmission line; pipeline
- Dam; dam with lock
- Cemetery; building
- Washbasin; water well; spring
- Mine shaft; well or cone mine; quarry; gravel pit
- Empireground; picnic area; U. S. location monument
- Ruins; cliff dwelling
- Distorted surface: strip mine, lava, sand
- Customs; index; international; supplementary
- Beach; contour; index; intermediate
- Stream, lake: perennial; intermittent
- Rapids, large and small; falls, large and small
- Area to be submerged; marsh, swamp
- Land subject to controlled inundation; woodland
- Swamp; mangrove
- Orchard; vineyard

U.S. Regional Depository Copy
 DO NOT DISCARD
 ARTHUR H. ROBINSON MAP LIBRARY
 University of Wisconsin-Madison
 RE-6717-17

A simplified description of topographic maps is available on request.
 B006-97823
 SET