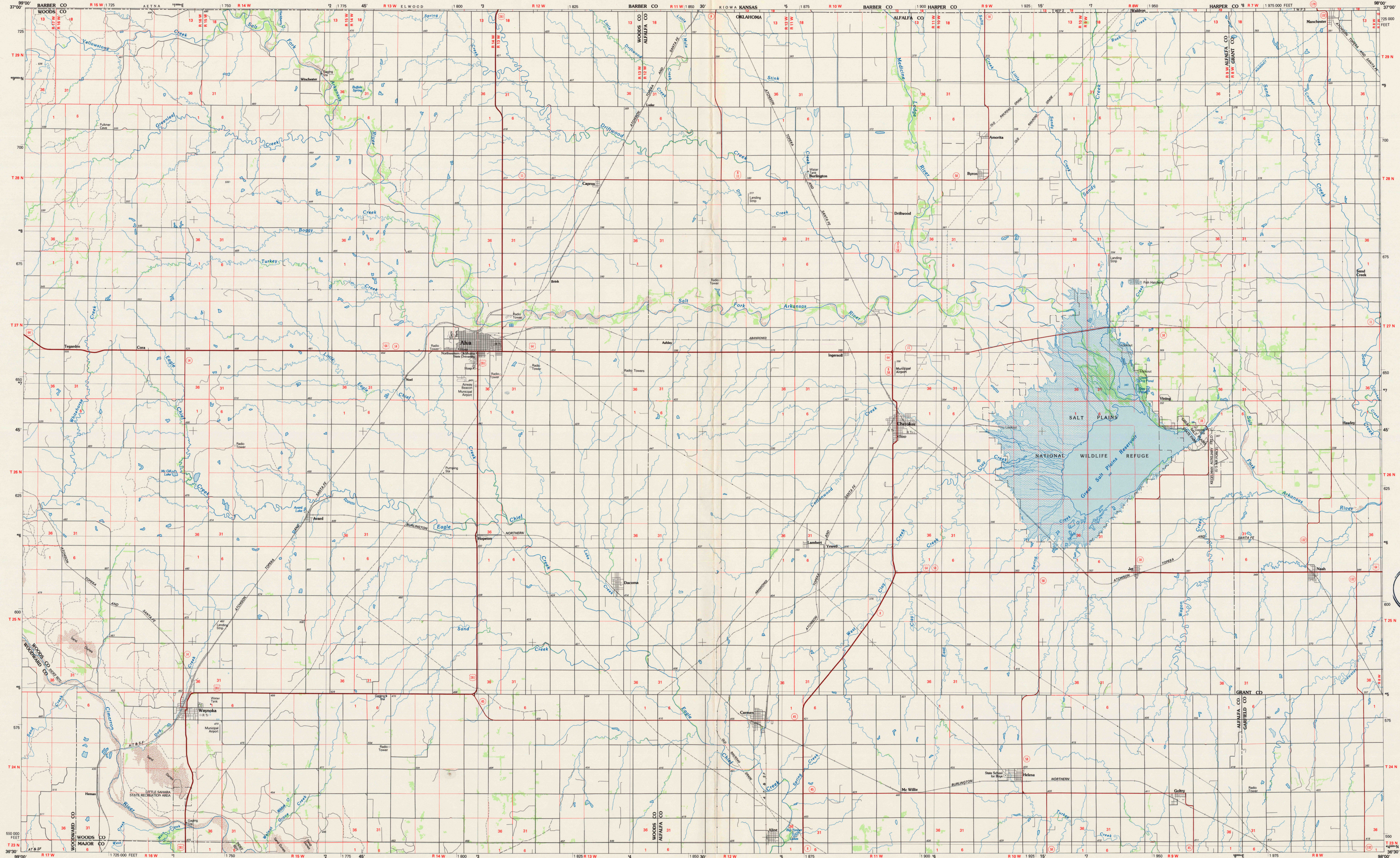
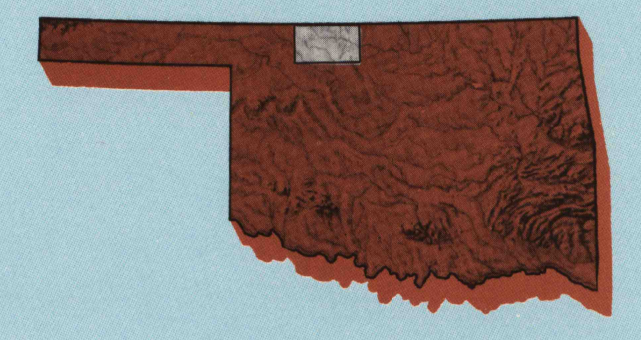


ALVA, OKLAHOMA-KANSAS

30 X 60 MINUTE SERIES (PLANIMETRIC)

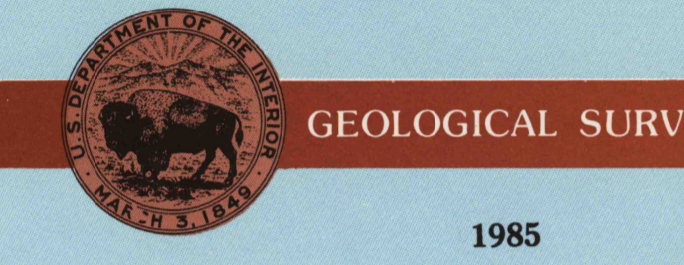


Alva
OKLAHOMA-KANSAS
1:100 000-scale
planimetric map



30 X 60 MINUTE QUADRANGLE
SHOWING

- Elevations in meters
- Highways, roads and other manmade structures
- Water features
- Woodland areas
- Geographic names



Produced by the United States Geological Survey
 Compiled from USGS 1:24 000-scale topographic maps dated 1968-1969. Planimetry revised from aerial photographs taken 1981 and other source data. Revised information not field checked.
 Map edited 1985.
 Projection and 10 000-meter grid, zone 14 Universal Transverse Mercator
 25 000-foot grid ticks based on Oklahoma coordinate system, north zone, 1927 North American Datum
 To place on the predicted North American Datum 1983 move the projection lines 1 meter south and 31 meters east
 There may be private inholdings within the boundaries of the National or State reservations shown on this map

NATIONAL GEODETIC VERTICAL DATUM OF 1929
ELEVATIONS SHOWN TO THE NEAREST METER

THIS MAP COMPLES WITH NATIONAL MAP ACCURACY STANDARDS

Meters	Feet
1	3.2808
2	6.5617
3	9.8425
4	13.1234
5	16.4042
6	19.6850
7	22.9659
8	26.2467
9	29.5276
10	32.8084

To convert meters to feet multiply by 3.2808
 To convert feet to meters multiply by 0.3048

ADJOINING MAPS	1	2	3
1 Protection	4	5	
2 Medicine Lodge	6	7	8
3 Bullhead			
4 Francis City			
5 Woodward			
6 Fairview			
7 End			

FOR SALE BY U.S. GEOLOGICAL SURVEY, DENVER, COLORADO 80225
 OR RESTON, VIRGINIA 22092
MAR 27 1986
 REC'D FILE COPY

Topographic Map Symbols

- Primary highway, hard surface
- Secondary highway, hard surface
- Light duty road, principal street, hard or improved surface
- Other road or street, trail
- Route marker: Interstate, U. S., State
- Railroad: standard gauge, narrow gauge
- Bridge: concrete, underpass
- Tunnel: road, railroad
- Built up area: locality, elevation
- Airport, landing field, landing strip
- National boundary
- State boundary
- County boundary
- National or State reservation boundary
- Land grant boundary
- U. S. public lands survey: range, township, section
- Range, township, section line: protected
- Power transmission line: pipeline
- Dam: dam with lock
- Canal: building
- Windmill: water well, spring
- Mine shaft: adit or cave; mine, quarry; gravel pit
- Campground, picnic area; U. S. location monument
- Railroad, off-branching
- Dissected surface: stony, loess, sand
- Contours: index, intermediate, supplementary
- Bathymetric contours: index, intermediate
- Stream, lake: perennial, intermittent
- Recessed, large and small, lake, large and small
- Area to be submerged: marsh, swamp
- Land subject to controlled inundation: woodland
- Scrub; mangrove
- Orchard; vineyard