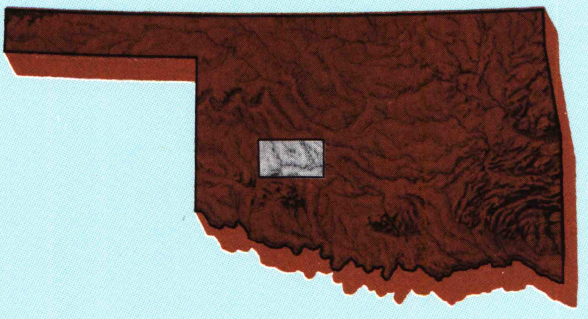


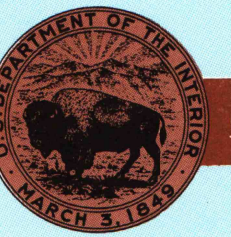
Anadarko  
OKLAHOMA

1:100 000-scale  
planimetric map



30 X 60 MINUTE QUADRANGLE  
SHOWING

- Elevations in meters
- Highways, roads and other manmade structures
- Water features
- Woodland areas
- Geographic names



GEOLOGICAL SURVEY

1986

Produced by the United States Geological Survey

Compiled from USGS 1:24 000-scale topographic maps dated 1967-1985. Planimetry revised from aerial photographs taken 1981 and other source data. Revised information not field checked. Map edited 1986.

Projection and 10 000-meter grid, zone 14. Universal Transverse Mercator. 25 000-foot grid ticks based on Oklahoma coordinate system, south and north zones. 1927 North American Datum. To place on the predicted North American Datum 1983 move the projection lines 3 meters south and 31 meters east. There may be private inholdings within the boundaries of the National or State reservations shown on this map.

NATIONAL GEODETIC VERTICAL DATUM OF 1929  
ELEVATIONS SHOWN TO THE NEAREST METER

THIS MAP COMPLIES WITH NATIONAL MAP ACCURACY STANDARDS

CONVERSION TABLE		DECLINATION DIAGRAM		ADJOINING MAPS		
Meters	Feet			1	2	3
1	3.2808			4	5	6
2	6.5616			7	8	9
3	9.8424			10	11	12
4	13.1232			13	14	15
5	16.4040			16	17	18
6	19.6848			19	20	21
7	22.9656			22	23	24
8	26.2464			25	26	27
9	29.5272			28	29	30
10	32.8080			31	32	33
To convert meters to feet multiply by 3.2808				34	35	36
To convert feet to meters multiply by 0.3048				37	38	39

UTM grid convergence (GN) and 1983 magnetic declination (MD) at center of map diagram is approximate

1 Fort Reservoir  
2 Wagoner  
3 Oklahoma City  
4 Oklahoma City  
5 Oklahoma City  
6 Oklahoma City  
7 Lawton  
8 Pauls Valley

FOR SALE BY U. S. GEOLOGICAL SURVEY, DENVER, COLORADO 80225  
OR RESTON, VIRGINIA 22092

U.S. Regional  
Depository Copy  
DO NOT DISCARD

Topographic Map Symbols

Primary highway, hard surface	Secondary highway, hard surface	Light duty road, principal street, hard or improved surface	Other road or access, trail	Route marker: Interstate, U. S., State	Bridge: overpass, underpass	Tunnel: road, railroad	Built up area, locality, elevation	Airport: landing field, landing strip	National boundary	State boundary	County boundary	National or State reservation boundary	Land grant boundary	U. S. public lands survey: range, township, section	Range, township, section line: protected	Power transmission line: piling	Dam: dam with lock	Cemetery: building	Wildlife: water well, spring	Mine shaft: adit or cave, mine, quarry, gravel pit	Campground: picnic area; U. S. location monument	Ruins: cliff dwelling	Distorted surface: strip mine, lava, sand	Contours: index, intermediate, supplementary	Bathymetric contours: index, intermediate	Stream, lake: perennial; intermittent	Rapids, large and small; falls, large and small	Area to be submerged; marsh, swamp	Land subject to controlled inundation; woodland	Scrub: mangrove	Orchard; vineyard
-------------------------------	---------------------------------	---	-----------------------------	--	-----------------------------	------------------------	------------------------------------	---------------------------------------	-------------------	----------------	-----------------	--	---------------------	---	--	---------------------------------	--------------------	--------------------	------------------------------	--	--	-----------------------	---	--	---	---------------------------------------	---	------------------------------------	---	-----------------	-------------------

A pamphlet describing topographic maps is available on request

ANADARKO, OKLAHOMA

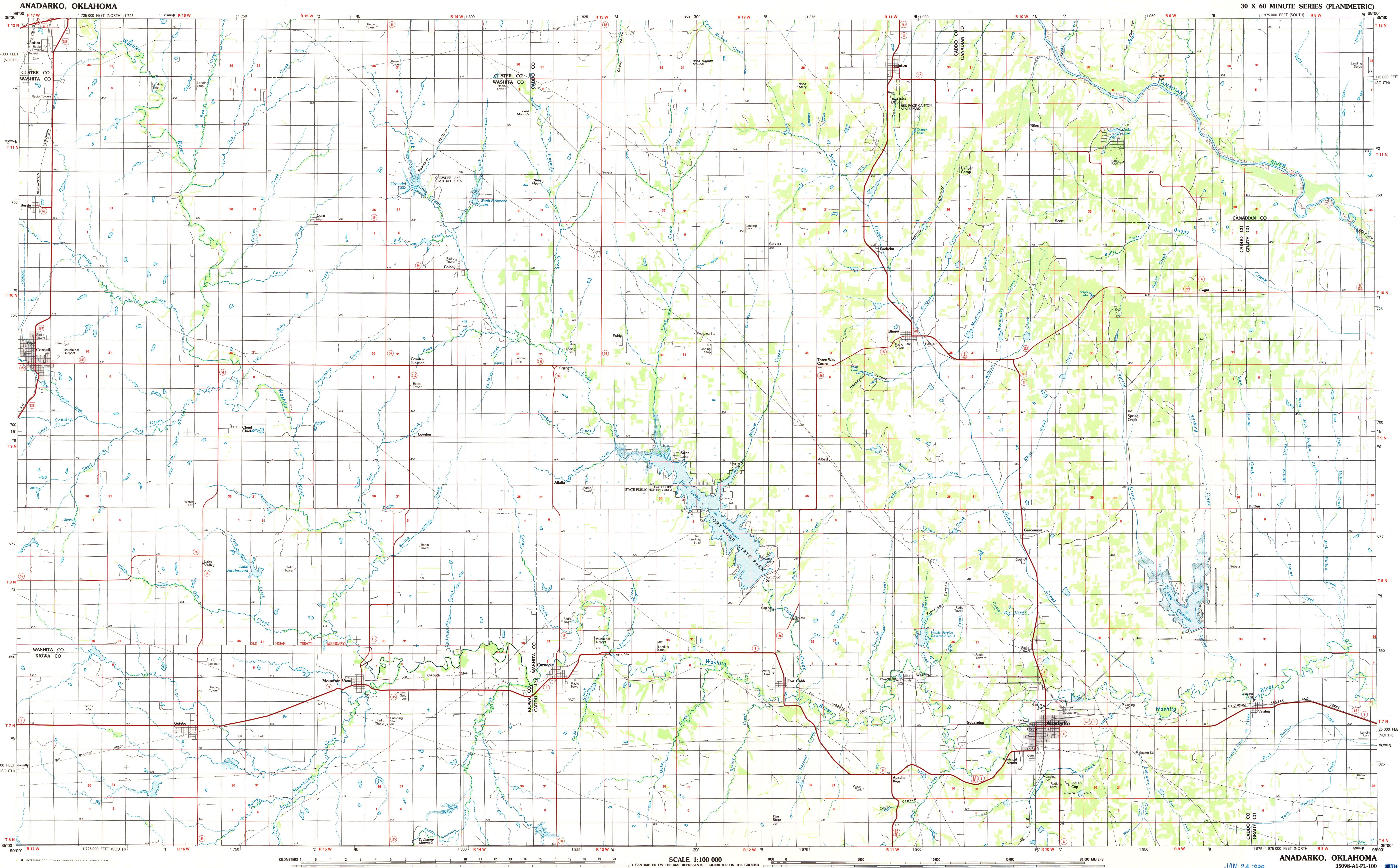
35098-A1-PL-100

THUR H. ROBINSON MAP LIBRARY

SET

1986

2006-918



JAN 24 1986