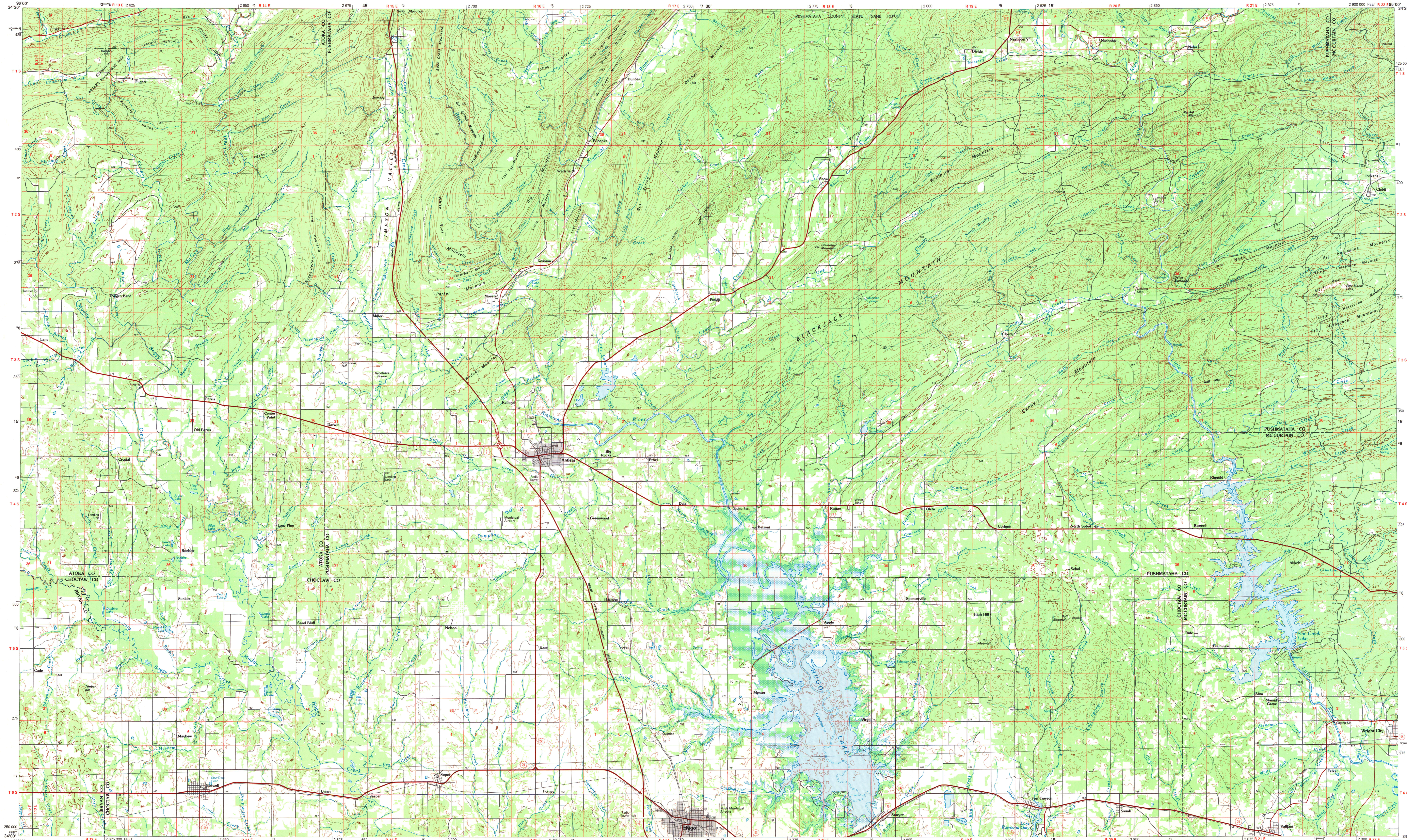
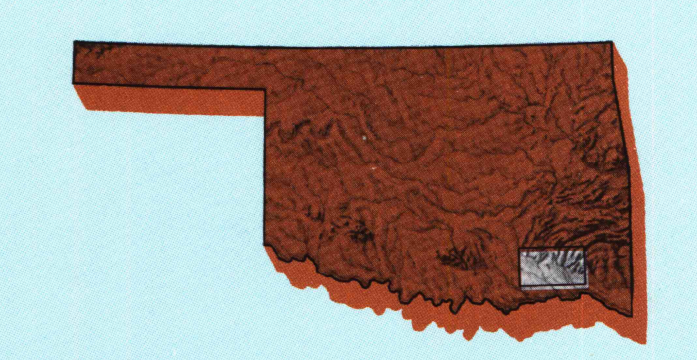


ANTLERS, OKLAHOMA

30 X 60 MINUTE SERIES (TOPOGRAPHIC)

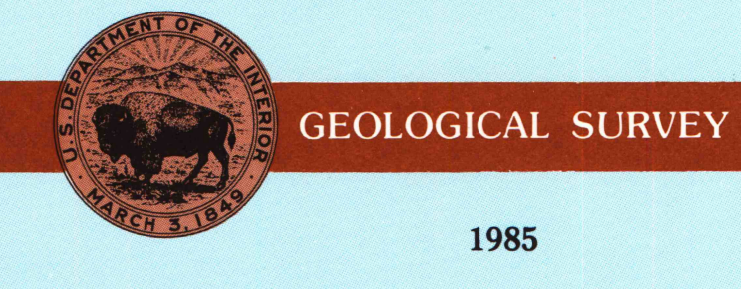


Antlers OKLAHOMA 1:100 000-scale metric topographic map



30 X 60 MINUTE QUADRANGLE SHOWING

- Contours and elevations in meters
- Highways, roads and other manmade structures
- Water features
- Woodland areas
- Geographic names



Produced by the United States Geological Survey
 Compiled from USGS 1:24 000-scale topographic maps dated 1957-1972. Planting revised from aerial photographs taken 1950-51 and other source data. Revised information not field checked. Map edited 1985.
 Projection and 10 000-meter grid, zone 15 Universal Transverse Mercator
 25 000-foot grid ticks based on Oklahoma coordinate system, south zone, 1927 North American Datum
 To place on the predicted North American Datum 1983 move the projection lines 7 meters south and 22 meters east
 There may be private inholdings within the boundaries of the National or State reservations shown on this map

CONTOUR INTERVAL 20 METERS
 NATIONAL GEODETIC VERTICAL DATUM OF 1929
 ELEVATIONS SHOWN TO THE NEAREST METER

THIS MAP COMPLIES WITH NATIONAL MAP ACCURACY STANDARDS

CONVERSION TABLE		DECLINATION DIAGRAM		ADJOINING MAPS	
Meters	Feet	Diagram		1	2
1	3.2808			3	4
2	6.5617			4	5
3	9.8425			5	6
4	13.1234			6	7
5	16.4042			7	8
6	19.6850			8	
7	22.9659				
8	26.2467				
9	29.5275				
10	32.8084				

To convert meters to feet multiply by 3.2808
 To convert feet to meters multiply by 0.3048

UTM grid convergence (GM) and 1983 magnetic declination (MD) at center of map. Diagram is approximate.

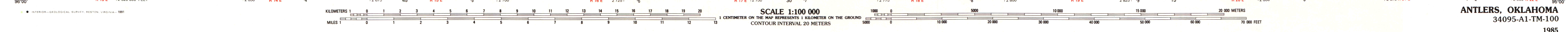
1 Antlers
 2 McAlester
 3 Thoburn
 4 Cowley
 5 Sherman
 6 Pottawatomie
 7 Muskogee
 8 Adair

FOR SALE BY U.S. GEOLOGICAL SURVEY
 DENVER, COLORADO 80225, OR RESTON, VIRGINIA 22092

A.H. ROBINSON
 MAP LIBRARY
 DEC 27 1991
 U.S. Regional Depository City
 DO NOT DISCARD
 University of Wisconsin
 Madison

Topographic Map Symbols

- Primary highway, hard surface
- Secondary highway, hard surface
- Light duty road, principal street, hard or improved surface
- Other road or street, soil
- Route marker: interstate, U. S., State
- Railroad: standard gage, narrow gage
- Bridge: covered, underpass
- Tunnel: road, railroad
- Built up area: locality, elevation
- Airport: landing field, landing strip
- National boundary
- State boundary
- County boundary
- National or State reservation boundary
- Land grant boundary
- U. S. public lands survey: range, township, section
- Range, township, section line: projected
- Power transmission line: pipeline
- Dam: dam with lock
- Canal: main channel
- Windmill; water well; spring
- Mine shaft; salt or cave; mine, quarry; gravel pit
- Campground; picnic area; U. S. location monument
- Rail: self-welding
- Distorted surface: strip mine, lava, sand
- Contours: index; intermediate; supplementary
- Bathymetric contours: index; intermediate
- Stream: lake, perennial; intermittent
- Rivule, large and small; hole, large and small
- Area to be submerged; marsh, swamp
- Land subject to controlled inundation; woodland
- Sorbs; mangrove
- Others; viewpoint



ANTLERS, OKLAHOMA
 34095-A1-TM-100
 1985

A pamphlet describing topographic maps is available on request.
 B306-9/8.02
 SET