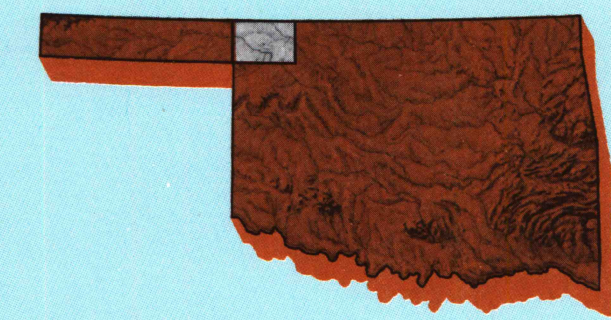


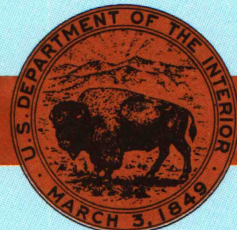
Buffalo
OKLAHOMA-KANSAS

1:100 000-scale metric
topographic map



30 X 60 MINUTE QUADRANGLE
SHOWING

- Contours and elevations in meters
- Highways, roads and other manmade structures
- Water features
- Woodland areas
- Geographic names



GEOLOGICAL SURVEY

1985

Produced by the United States Geological Survey

Compiled from USGS 1:250 000-scale topographic maps dated 1970-1971. Planimetry revised from aerial photographs taken 1984 and other source data. Revised information not field-checked. Map edited 1985.
Projection and 10 000-meter grid, zone 14, Universal Transverse Mercator
25 000-foot grid ticks based on Oklahoma coordinate system, north zone
1927 North American Datum
To place on the predicted North American Datum 1983, move the projection lines 34 meters east.
There may be private inholdings within the boundaries of the National or State reservations shown on this map.

CONTOUR INTERVAL 10 METERS
NATIONAL GEODETIC VERTICAL DATUM OF 1929
ELEVATIONS SHOWN TO THE NEAREST METER

THIS MAP COMPLIES WITH NATIONAL MAP ACCURACY STANDARDS

CONVERSION TABLE		DECLINATION DIAGRAM		ADJOINING MAPS				
Meters	Feet							
1	3.2808		MAGNETIC DECLINATION	1	2	3		
2	6.5617			4	5	6		
3	9.8425			7	8	9		
4	13.1234			10	11	12		
5	16.4042			13	14	15		
6	19.6850			16	17	18		
7	22.9659			19	20	21		
8	26.2467			22	23	24		
9	29.5276			25	26	27		
10	32.8084			28	29	30		
To convert meters to feet multiply by 3.2808		UTM grid convergence (GN) and 1983 magnetic declination (MD) at center of map Diagram is approximate		1 Liberal 2 Penobscot 3 Medicine Lodge 4 Beaver 5 Alsea 6 Penobscot 7 Woodward 8 Fairview				
To convert feet to meters multiply by 0.3048								

FOR SALE BY U.S. GEOLOGICAL SURVEY
DENVER, COLORADO 80225 OR RESTON, VIRGINIA 22092

A.H. ROBINSON

MAP LIBRARY

MAR 29 1990

University of Wisconsin

Madison

U.S. Regional

Depository Copy

DO NOT DISCARD

Topographic Map Symbols

Primary highway, hard surface	
Secondary highway, hard surface	
Light duty road, principal street, hard or improved surface	
Other road or street, trail	
Route marker: Interstate, U.S., State	
Railroad: standard gauge, narrow gauge	
Bridge: overpass, underpass	
Tunnel: road, railroad	
Built up area, locality, elevation	
Airport: landing field, landing strip	
National boundary	
State boundary	
County boundary	
National or State reservation boundary	
Land grant boundary	
U.S. public lands survey: range, township, section	
Range, township, section line: projected	
Power transmission line: pipeline	
Dam, dam with lock	
Cemetery: building	
Windmill, water well, spring	
Mine shaft, adit or cave, mine, quarry, gravel pit	
Campground: picnic area; U.S. location monument	
Piers, cliff dwelling	
Disturbed surface: strip mine, lava, sand	
Contours: index, intermediate, supplementary	
Bathymetric contours: index, intermediate	
Stream, lake, perennial, intermittent	
Pond, large and small, lake, large and small	
Area to be submerged, marsh, swamp	
Land subject to controlled inundation; woodland	
Sand, mangrove	
Orchard, vineyard	

A pamphlet describing topographic maps is available on request

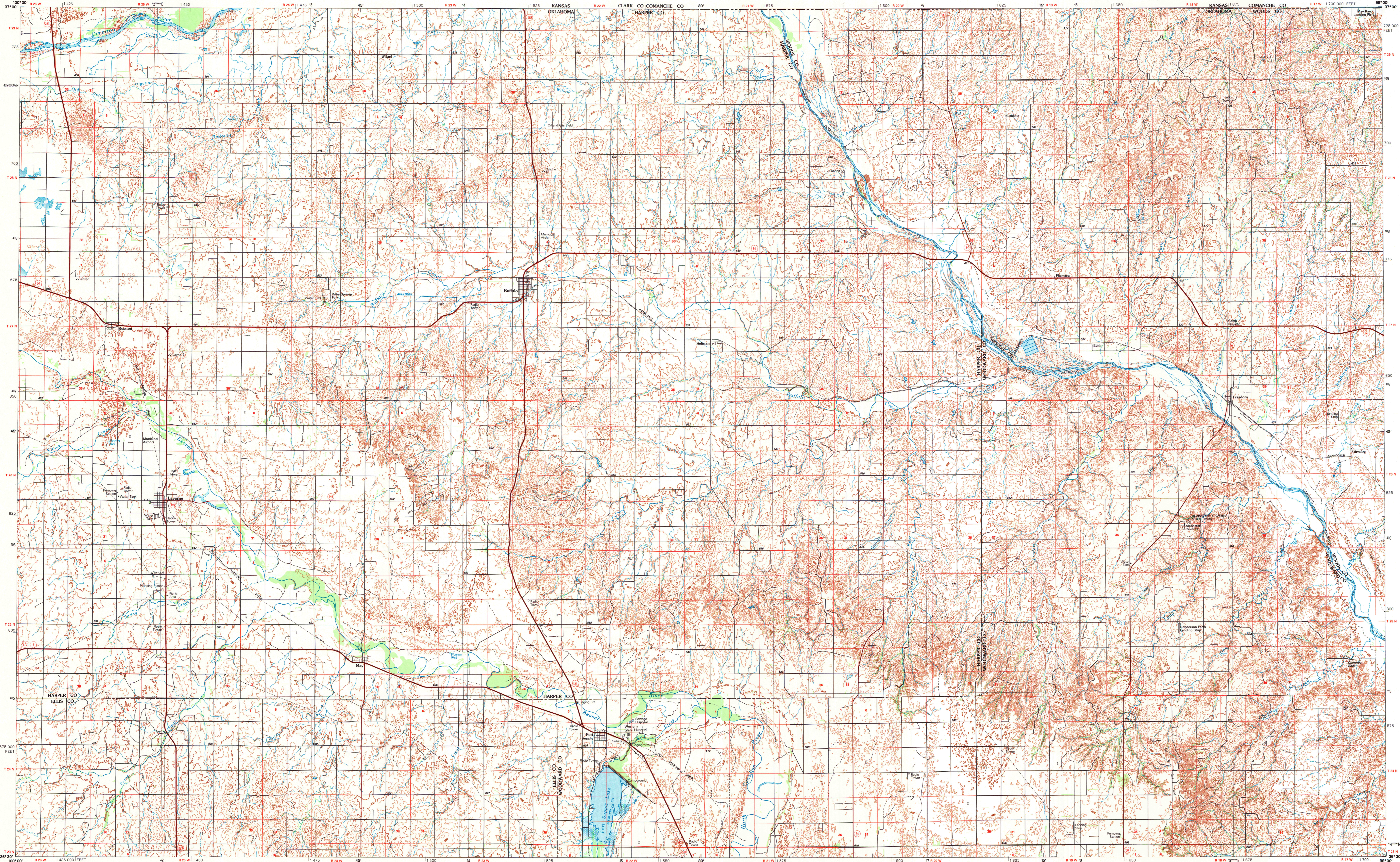
SET

B006-9/2
copy 2

1985

BUFFALO, OKLAHOMA-KANSAS

30 X 60 MINUTE SERIES (TOPOGRAPHIC)



INTERIOR- GEOLOGICAL SURVEY, RESTON, VIRGINIA-1989

KILOMETERS 1 0 1 2 3 4 5 6 7 8 9 10 11 12 13 14 15 16 17 18 19 20
MILES 1 0 1 2 3 4 5 6 7 8 9 10 11 12 13
SCALE 1:100 000
1 CENTIMETER ON THE MAP REPRESENTS 1 KILOMETER ON THE GROUND
CONTOUR INTERVAL 10 METERS
1000 0 5000 10 000 15 000 20 000 25 000 30 000 35 000 40 000 45 000 50 000 55 000 60 000 65 000 70 000 METERS

BUFFALO, OKLAHOMA-KANSAS
36099-E1-TM-100